



Connect

Plug-in for the Petrel* Platform

Installation Guide

GVERSE Connect 2019.2

*Mark of Schlumberger



© 2001 - 2019 LMKR Holdings. All Rights Reserved.

This publication is copyright protected. No part of this publication may be copied or distributed, transmitted, transcribed, stored in a retrieval system, or translated into any human or computer language, in any form or by any means, electronic, magnetic, manual, or otherwise, or disclosed to third parties without the express written permission of:

LMKR

Corporate Headquarters,
207, Building 4,
Gold and Diamond Park,
Sheikh Zayed Road,
Dubai, UAE, P.O.Box 62163.
Phone: +971 4 372 7900
FAX: +971 4 358 6386
Internet: www.lmkr.com

Trademark Notice

GVERSE® is a registered trademark of LMKR. WebSteering, Predict3D, Attributes, Connect, Planner, Inversion, Geomodeling, Geophysics, FieldPlanner, Petrophysics and NOW are trademarks of LMKR.

DecisionSpace, Discovery, GeoGraphix (stylized), GeoGraphix Exploration System, GeoLink, GES, GESXplorer, GMAplus, IsoMap, LeaseMap, LogM, OpenWorks, OpenWorks Well File, PRIZM, SeisVision, Xsection are trademarks, registered trademarks or service marks of Landmark Graphics Corporation.

All other trademarks are the property of their respective owners.

Disclaimer

The information contained in this document is subject to change without notice and should not be construed as a commitment by LMKR. LMKR assumes no responsibility for any error that may appear in this manual. Some states or jurisdictions do not allow disclaimer of expressed or implied warranties in certain transactions; therefore, this statement may not apply to you.

Contents

- Introduction 1
- System Requirements 1
 - Software 1
 - Operating System 2
 - Hardware 2
 - Licenses 2
- Installation 3
 - Installing GVERSE Connect 3
 - Uninstalling GVERSE Connect 6
- Licensing 8
 - Configuring the License 8
- Third Party Applications 14
- International Trade Compliance 15
- Definitions 15
- Contacting LMKR Support 16

Introduction

LMKR is pleased to announce the release of the GVERSE® Connect 2019.2 Plug-in. The Connect plug-in enables well, seismic and surfaces to come together into an integrated interpretation environment. This plug-in facilitates the direct exchange of data between GeoGraphix® and Petrel* E&P software platform. It enables an efficient exchange between two industry-leading E&P technologies and provides users the ability to use the “best fit” technologies for their job without the concern of data migration issues and related delays. The Connect plug-in is part of the GVERSE application suite by LMKR (<http://www.lmkr.com/gverse>).

LMKR GVERSE consists of geoscience and engineering solutions focused on workflow optimization and enhancing the productivity of the teams working on diverse geological and geophysical projects. These applications help cut the processing time required for interpretations resulting in fast, easy to use scalable tools that are inter-operable with other known geoscience software suites; enabling a connected multi skilled workforce.

This document guides you through the installation and license configuration processes of the Connect plug-in. It also lists the system requirements necessary to install and run the plug-in.

System Requirements

The following sections list the system requirements for the Connect 2019.2 plug-in.

Software

The software that must be installed on the system running the plug-in are as follows:

- GeoGraphix Discovery 2019.2
- Petrel 2018.2, 2018.1 or 2017.x
- LMKR License Management Tool 2019.2 for Connect license
The LMKR License Management Tool (LMT) must be installed to configure the Connect license.
- Microsoft® Visual C++ Runtime 2013
- Adobe Reader for selected help files (optional)

* **Mark of Schlumberger**

Operating System

To run the plug-in, you need one of the following operating systems installed on your system:

- Windows® 7 Professional x64
- Windows® 7 Enterprise x64
- Windows® 7 Ultimate x64
- Windows® 10 Professional x64
- Windows® 10 Enterprise x64

Note: It is recommend to use the latest Microsoft® service packs and security patches.

Hardware

The hardware requirements for the plug-in are the same as the Petrel hardware requirements.

Licenses

The following licenses are required to run the plug-in:

- GeoGraphix Discovery 2019.2 license
- Petrel 2018.2, 2018.1 or 2017.x license
- GVERSE Connect 2019.2 license

The following product/feature licenses are required to import/export the IsoMap surfaces, and horizons and faults:

- IsoMap license for surfaces
- GVERSE Geophysics license for horizons and faults

Note: Refer to the LMKR Customer Support Portal (<http://support.lmkr.com/>) for up-to-date information on the requirements.

Installation

This section guides you through the installation and uninstallation processes of the Connect plug-in.

Installing GVERSE Connect

Prior to installation, please make sure that supported versions of GeoGraphix and Petrel are installed on the system.

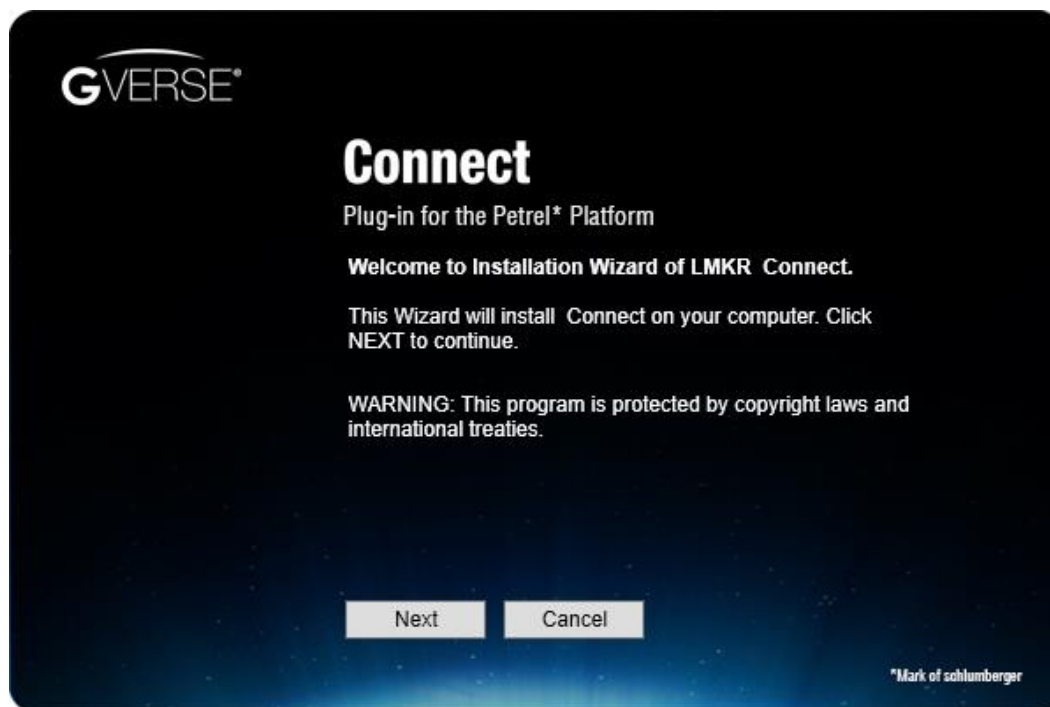
To install the Connect plug-in:

1. Download the plug-in from the **LMKR Support Portal - Downloads** page (<http://support.lmkr.com/>).
2. Navigate to the location where you downloaded the installation setup.

Note: Before starting the installation, please make sure that all open applications are closed.

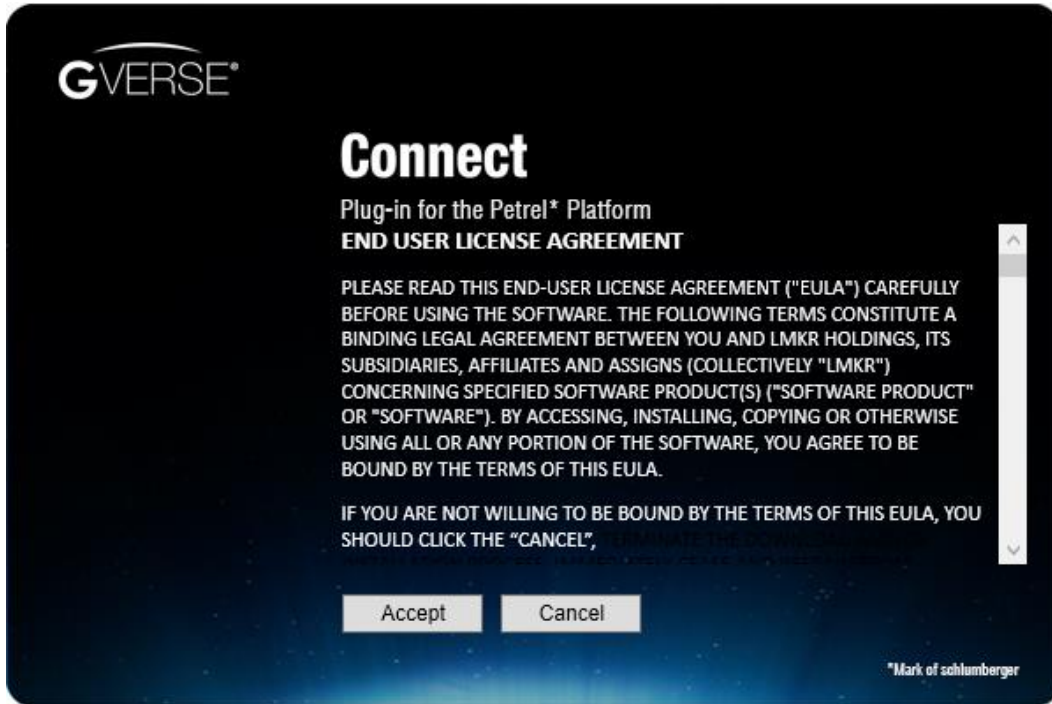
3. Double-click the Connect plug-in setup executable file (EXE).

The **Installation Wizard** dialog displays.

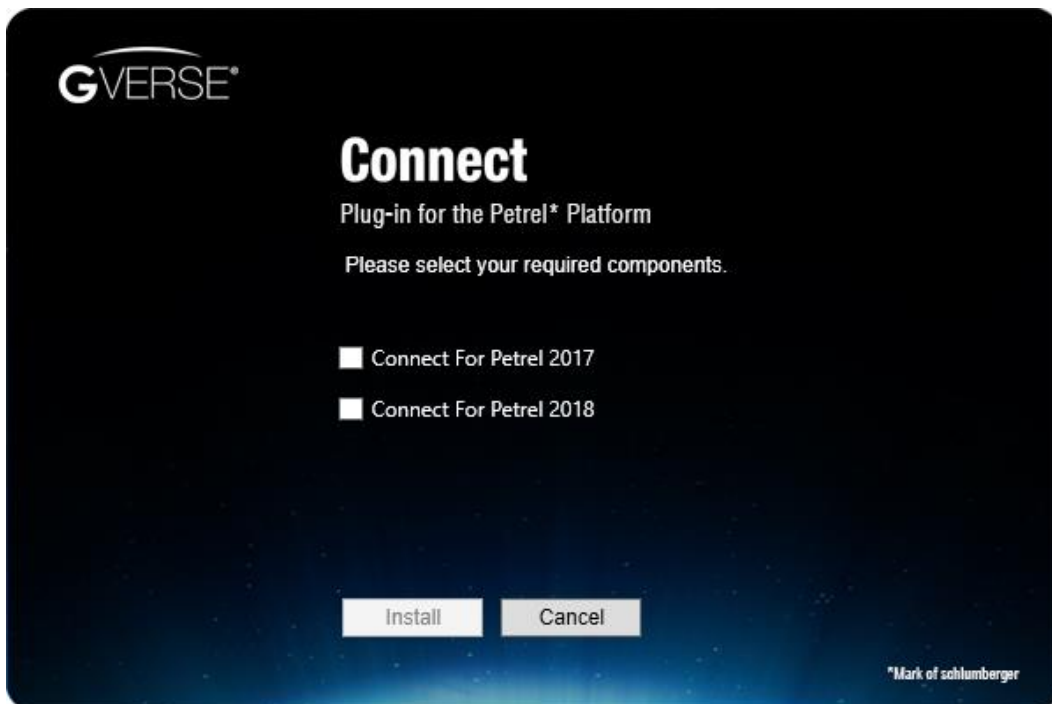


4. Click **Next**.

The **End User License Agreement** dialog displays.

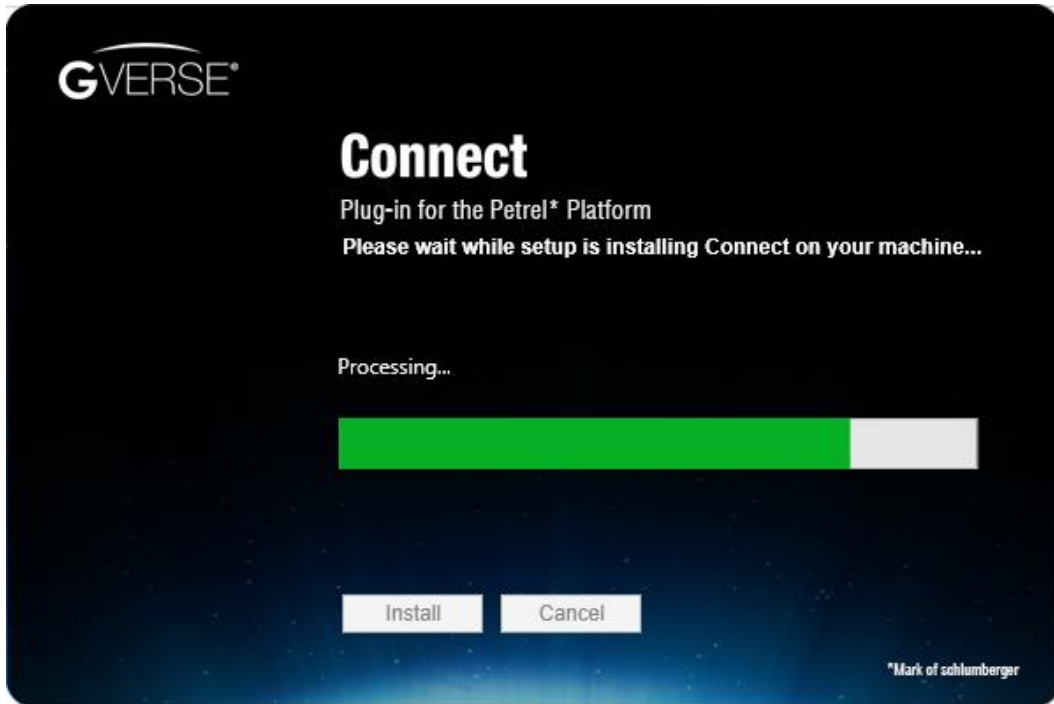


5. If you agree to the license agreement, click **Accept**.
6. Select the required Petrel version(s).

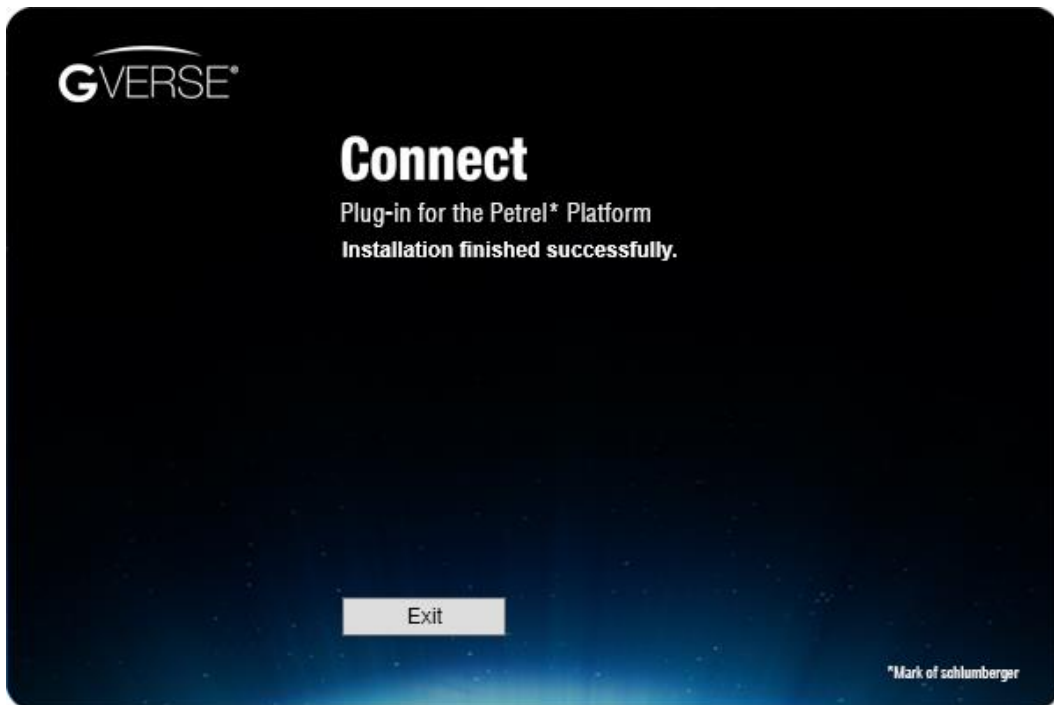


7. Click **Install** to continue with the installation.

The installation process initiates and the dialog displays the installation progress.



When the installation finishes, the **Exit** dialog displays.



8. Click **Exit** to complete the installation.

Uninstalling GVERSE Connect

Petrel must be closed before removing the Connect plug-in.

To uninstall the Connect plug-in:

1. From the **Windows Start** menu, select **Control Panel**.

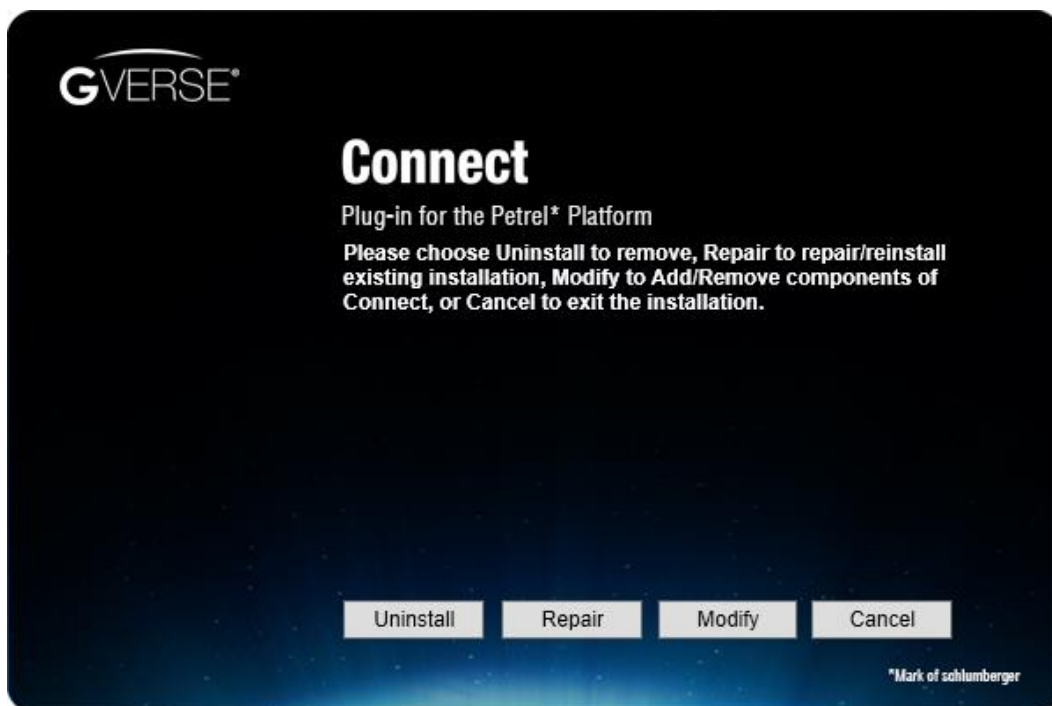
The **Control Panel** window displays.

2. From **Programs**, select **Uninstall a Program**.

The **Programs and Features** window displays.

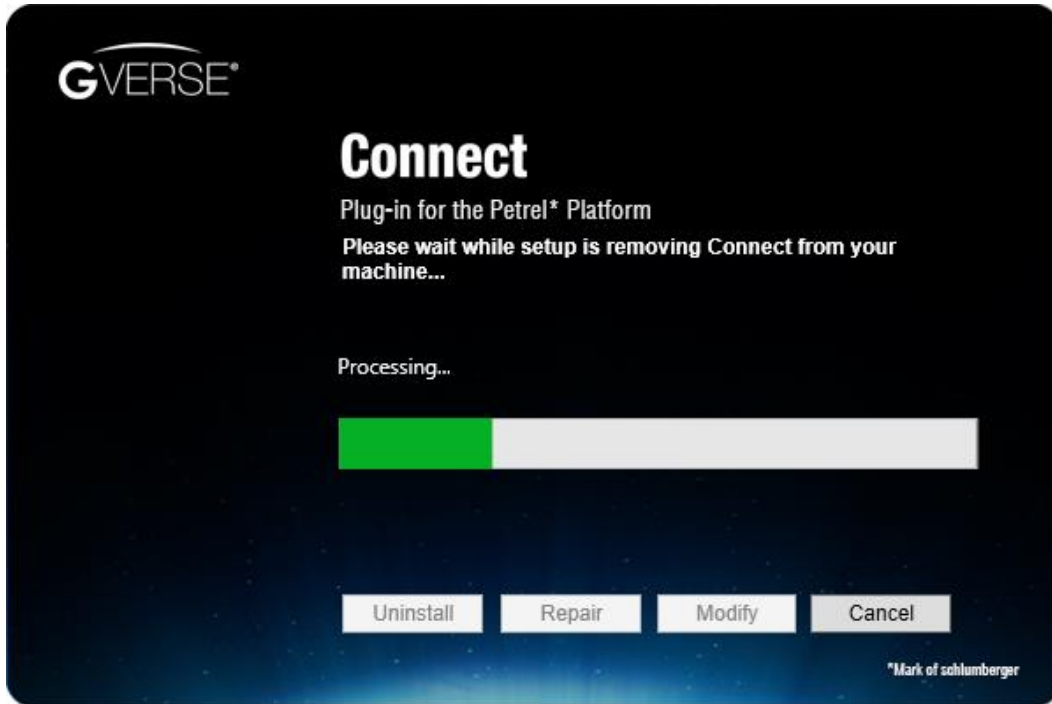
3. In the list of applications, double-click on the Connect application.

The dialog to uninstall the Connect plug-in displays.

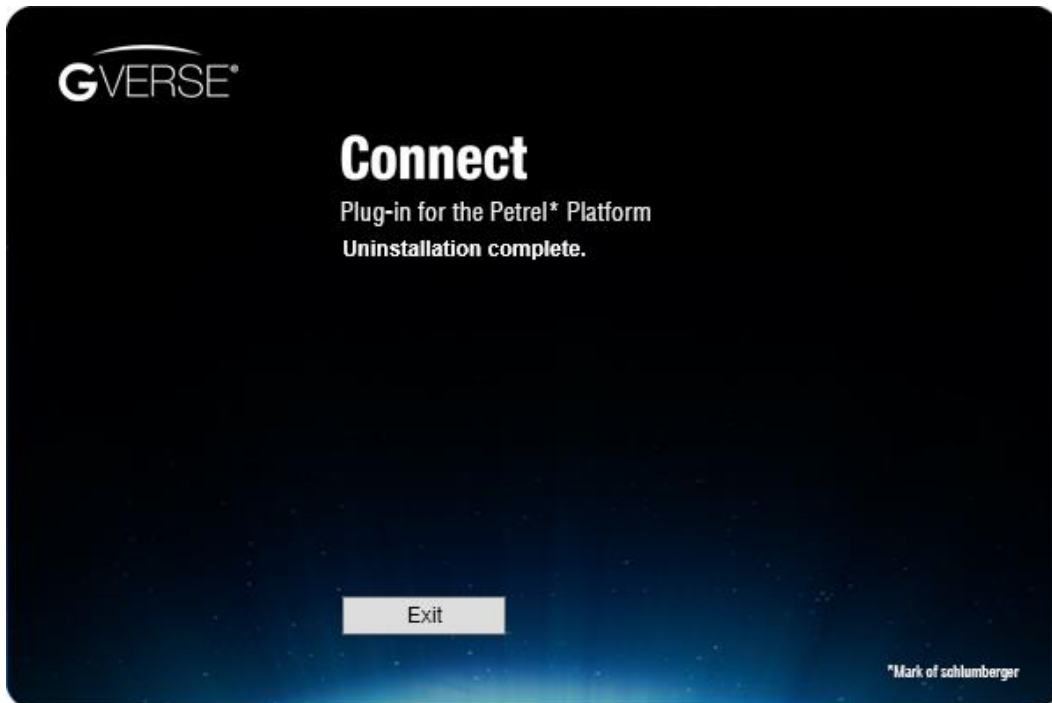


4. Click **Uninstall**.

The uninstall process initiates and the dialog displays the uninstallation progress.



Once the Connect plug-in is uninstalled from your system, the **Uninstallation complete** message displays.



5. Click **Exit** to finish the uninstallation.

Licensing

To run the Connect plug-in, you need a valid LMKR license. Please contact COS@lms.com to request a license. Once you receive the license, use the LMT to configure it for a single system or to set up a network license on a server. This can be done either before or after the Connect plug-in installation.

If a license file is not configured, then the plug-in does not open and an error message displays. In this case, you must configure the license using the LMT, and then re-launch the Connect plug-in.

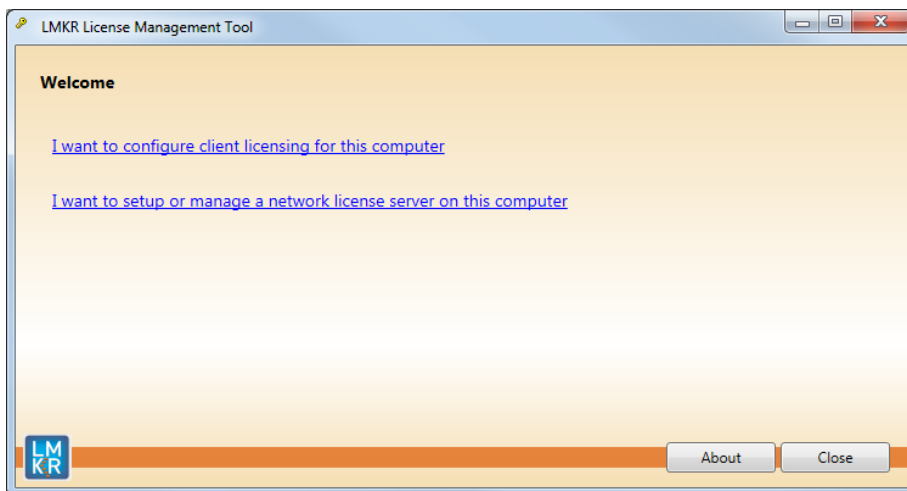
This section provides basic information on how to configure the Connect plug-in license using the LMT. For detailed information on how to install the LMT and configure the Connect plug-in license, refer to the LMT Installation document.

Configuring the License

To configure the Connect plug-in license:

1. Obtain your license file from COS@lms.com.
2. Download the LMT from the **LMKR Support Portal - Downloads** page (<http://support.lms.com/>).
3. Install the LMT. Once installed, launch the LMT from **Start>>All Programs>>LMKR>>Licensing>>License Management Tool**.

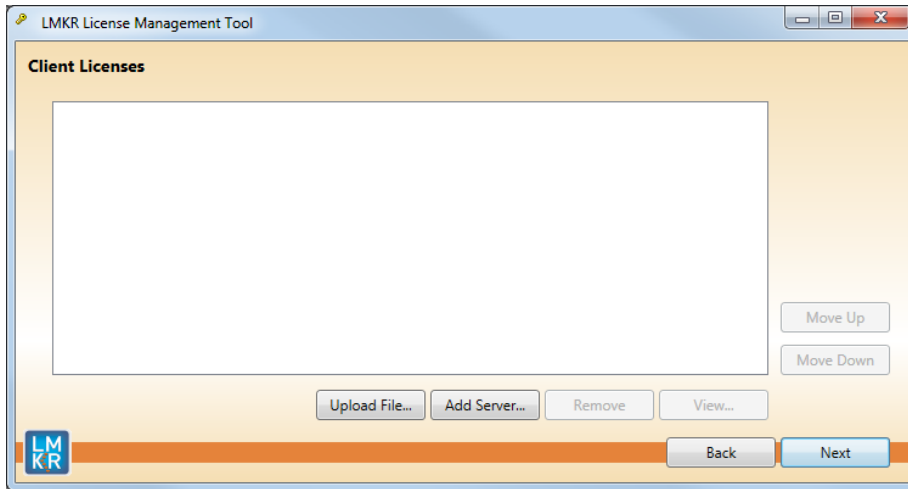
The **LMKR License Management Tool Welcome** dialog displays.



4. In this dialog, you can either:
 - Click **I want to configure client licensing for this computer** to [configure a client side license](#) on the current system.Or
 - Click **I want to setup or manage a network license server on this computer** to [setup a license server](#).

Configure a Client Side License

After clicking **I want to configure client licensing for this computer**, the **Client Licenses** dialog displays.

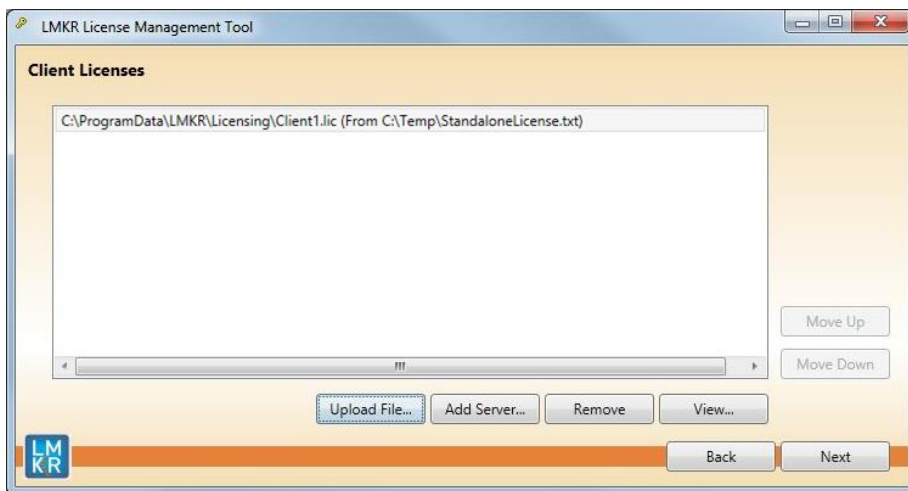


5. In this dialog, you can either:
 - Click **Upload file** to [select a standalone client license file](#).Or
 - Click **Add Server** to [connect to an existing license server](#).

Select a Standalone Client License File

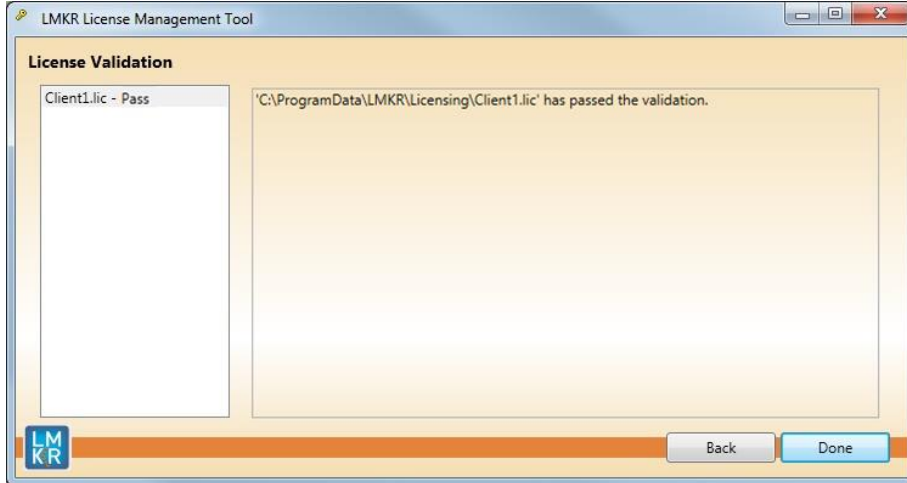
6. Click **Upload File**, browse to select the license you received from LMKR, and then click **Open**.

The selected license displays.



7. Click **Next**.

On successful license configuration, the **Pass** message displays as shown in the image below.



Note: If an error occurs, please contact support@lms.com for assistance.

8. Click **Done** when finished.

Connect to an Existing License Server

6. Click **Add Server**.

The **Add Server** dialog displays.

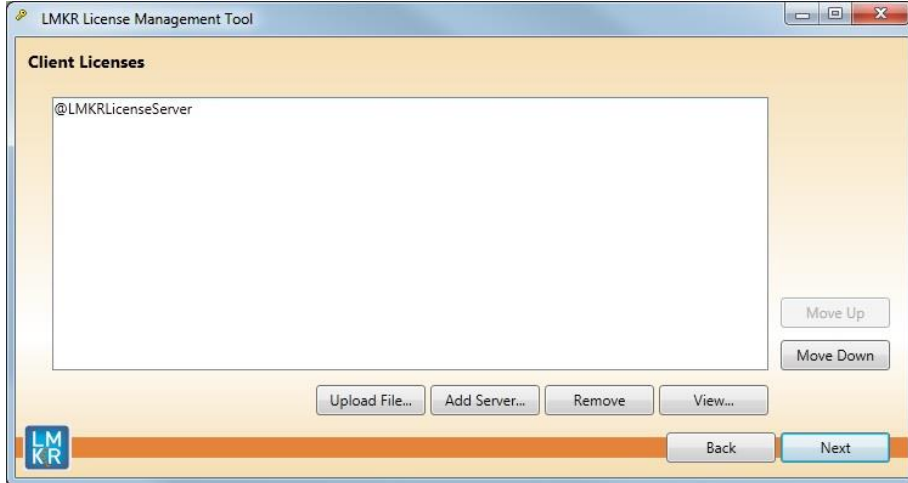


7. In this dialog, specify the following:
 - **Port Number:** If a specific port is required, clear the **Auto** checkbox, and then enter the port number that matches the port number being used by the LMKR license server (contact your network administrator for more information).
 - **Server Name:** Enter the name or the IP address of the license server

Note: By default, the Auto option is selected where the port is automatically detected. This option is used only when the license server uses a port from within the block of ports specific for Flexera FLEXnet Licensing ranging from 27000 to 27009.

8. Click **OK**.

The selected LMKR license server displays in this dialog.

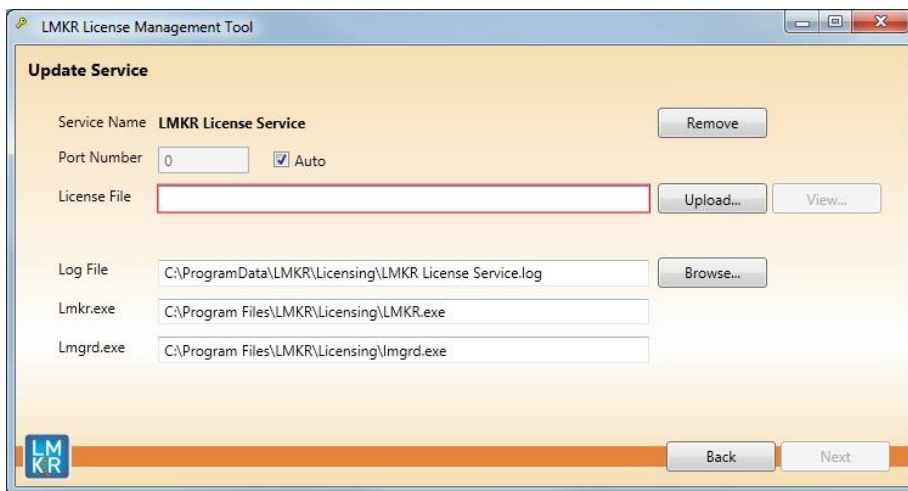


9. Click **Next**.
10. Click **Done** once finished.

Setup a License Server

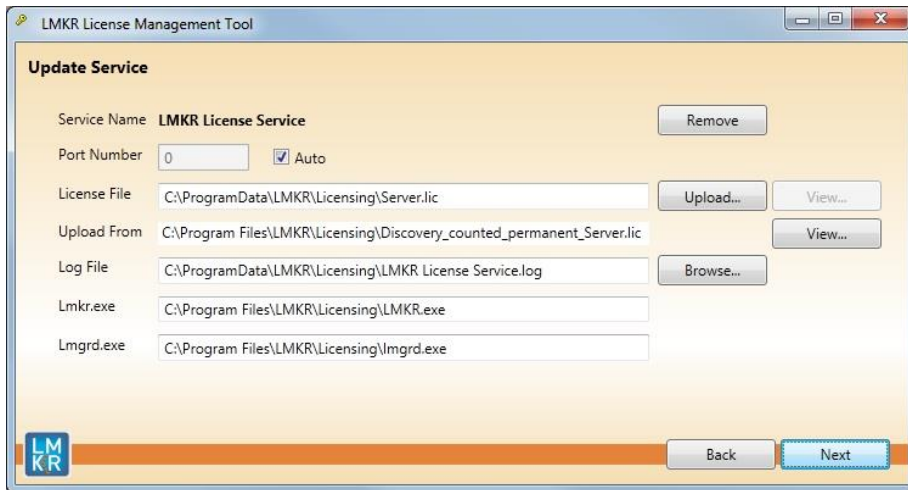
This is only performed on the system running the LMKR license server.

After clicking **I want to setup or manage a network license server on this computer**, the Update Service dialog displays.



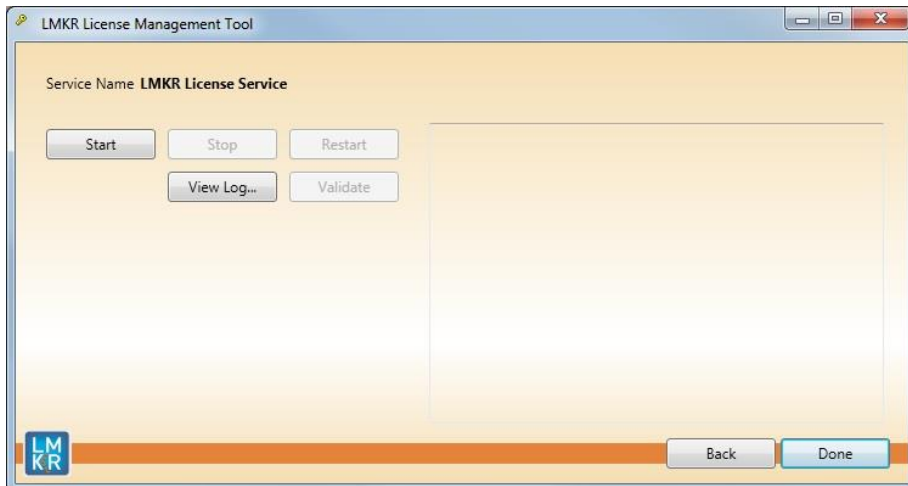
5. In this dialog, specify the following:

- **Port Number:** If a specific port is required by your network administrator, clear the **Auto** check box, and then enter the port number.
- **License File:** Click **Upload** to upload a new license file. The license file that is uploaded is renamed as **Server.lic**. This file is saved in the *C:\ProgramData\LMKR\Licensing* folder.
- **Log File:** Click **Browse** to select a location to save the log file.



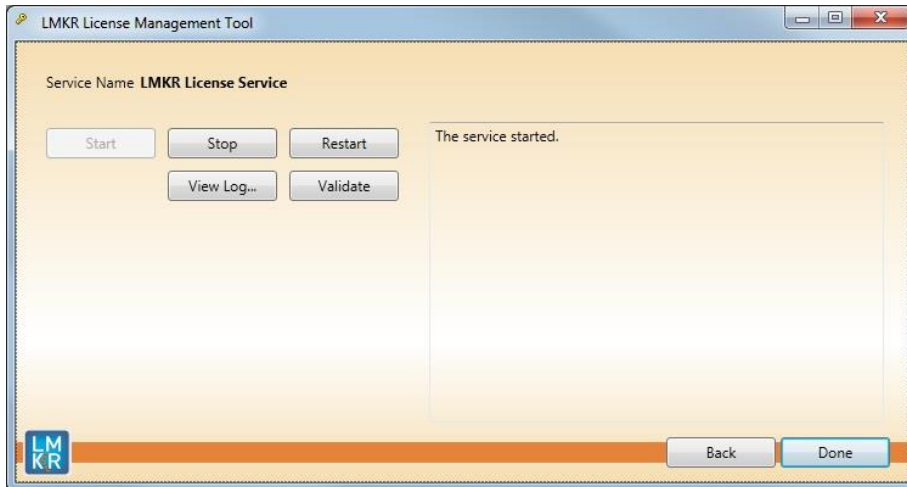
6. Click **Next**.

The LMKR License Server is then installed as a Windows Service.



7. Click **Start** to initiate the **LMKR License Service**.

The **The service started** message displays in the dialog box.



Note: If an error displays, contact support@lml.com for assistance.

8. Click **Done** once finished.

Third Party Applications

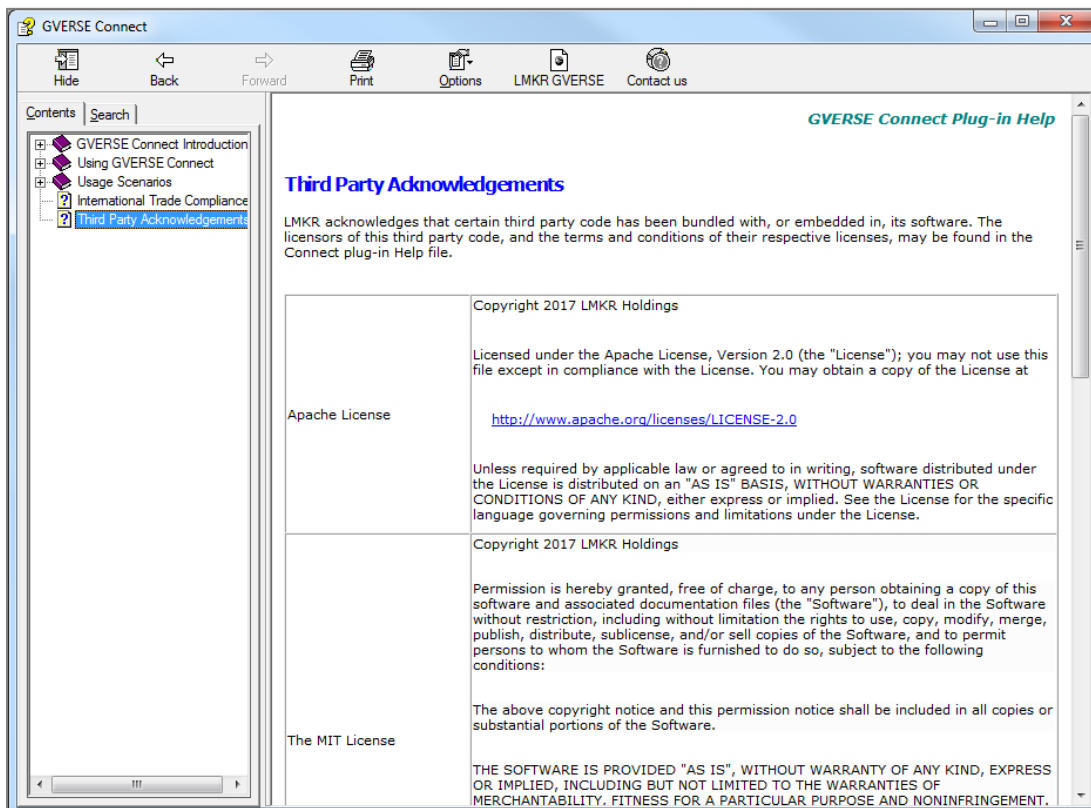
LMKR acknowledges that certain third party code has been bundled with, or embedded in, its software. The licensors of this third party code, and the terms and conditions of their respective licenses, may be found in the Connect plug-in Help file.

To access the third party license agreements:

1. In the Connect plug-in dialog, click .

The **Help** window displays.

2. In the **Contents** pane, locate the **Third Party Acknowledgements** help topic as shown in the image below.



International Trade Compliance

This application is manufactured or designed using U.S. origin technology and is therefore subject to the export control laws of the United States. Any use or further disposition of such items is subject to U.S. law. Exports from the United States and any re-export thereafter may require a formal export license authorization from the government. If there are doubts about the requirements of the applicable law, it is recommended that the buyer obtain qualified legal advice. These items cannot be used in the design, production, use, or storage of chemical, biological, or nuclear weapons, or missiles of any kind.

The ECCNs provided here (if available) represent LMKR's opinion of the correct classification for the product today (based on the original software and/or original hardware). Classifications are subject to change. If you have any questions or need assistance please contact us at support@lmkr.com.

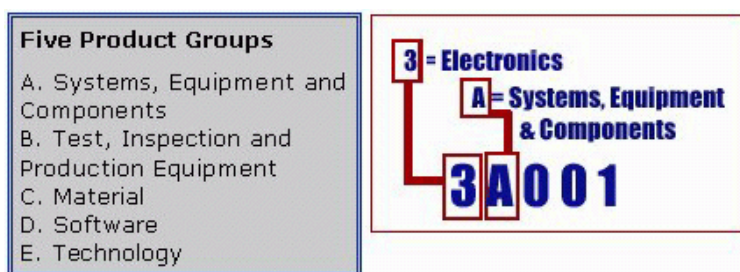
Under the U.S. Export Administration Regulations (EAR), the U.S. Government assigns your organization or client, as exporter/importer of record, responsibility for determining the correct authorization for the item at the time of export/import. Restrictions may apply to shipments based on the products, the customer, or the country of destination, and an export license may be required by the Department of Commerce prior to shipment. The U.S. Bureau of Industry and Security provides a website to assist you with determining the need for a license and with information regarding where to obtain help.

The URL is: <http://www.bis.doc.gov>.

Definitions

ECCN - Export Control Classification Number - The ECCN is an alpha-numeric code, e.g., 3A001, that describes a particular item or type of item, and shows the controls placed on that item. The CCL (Commerce Control List) is divided into ten broad categories, and each category is further subdivided into five product groups. The CCL is available on the [EAR Website](#).

The following illustration is a sample:



The ECCN number (if available) and License Type for this product are included in the table below. Also included is the date the table was last updated.

Product/Component/R5000	EAR Number	License	Last Updated On
GVERSE Connect	EAR99	EAR	11/23/2015

Contacting LMKR Support

LMKR is committed to providing the highest level of technical customer support in the industry. With an average tenure of more than thirteen years, our highly trained and experienced staff of technical analysts is comprised of geoscientists, engineers, land professionals, petrophysicists, and system specialists.

Please refer to our Customer Support timings mentioned below to ensure that you have access to our support analysts assigned to your region. When getting in touch with LMKR support, please remember that real-time support will not be available during bank holidays or after office hours. If you do get in touch with LMKR Support outside of work hours, please leave a voice message with a brief description of the issue that you are facing. Your voice message will be used to automatically create a support case for you. This will enable our analysts to attend to your issue and provide you with a resolution as soon as possible.

North and South America	Europe, Middle East & Africa
<p>Monday – Friday 8 am – 6 pm CST* Toll Free (US/Canada): +1 855 GGX LMKR (449 5657)</p> <p>Colombia: +57 1381 4908</p> <p>United States: +1 303 295 0020</p> <p>Canada: +1 587 233 4004</p> <p><i>*Excluding bank holidays</i></p>	<p>UK: Monday - Friday 8 am – 5 pm* +44 20 3608 8042</p> <p>UAE: Sunday - Thursday (Dubai GMT+4) 8 am – 5 pm +971 4 3727 999</p> <p><i>*Excluding bank holidays</i></p>
Asia Pacific & Australian Continent	Southwest Asian countries
<p>Malaysia: Monday - Friday (Kuala Lumpur GMT+8) 9 am – 6 pm* +60 32 300 8777</p> <p><i>*Excluding bank holidays</i></p>	<p>Pakistan: Monday - Friday (Islamabad GMT+5) 9 am – 6 pm* +92 51 209 7400</p> <p><i>*Excluding bank holidays</i></p>

Helpful Links

Name	Website Address
LMKR Homepage	http://www.lmkr.com
LMKR GVERSE	http://www.lmkr.com/gverse/
LMKR Support Portal	http://support.lmkr.com
Petrel - Schlumberger Information Solutions	http://www.software.slb.com/products/platform/Pages/petrel.aspx

This page has been intentionally left blank.