



Planner

Fully integrated well planning

Installation Guide for GVERSE Planner 2017.2



© 2001 - 2018 LMKR Holdings. All Rights Reserved.

This publication is copyright protected. No part of this publication may be copied or distributed, transmitted, transcribed, stored in a retrieval system, or translated into any human or computer language, in any form or by any means, electronic, magnetic, manual, or otherwise, or disclosed to third parties without the express written permission of:

LMKR Holdings

Corporate Headquarters
Unit No. B1501, Latifa Tower
Sheikh Zayed Road, Dubai, UAE P.O.
Box 62163
Phone: +971 4 372 7900
FAX: +971 4 358 6386
Internet: www.lmkr.com

Trademark Notice

GVERSE™ WebSteering, Predict3D, Attributes, Connect, Planner, Inversion, Geomodeling, Geophysics are trademarks of LMKR.

DecisionSpace, Discovery, GeoGraphix (stylized), GeoGraphix Exploration System, GeoLink, GES, GESXplorer, GMAplus, IsoMap, LeaseMap, LogM, OpenWorks, OpenWorks Well File, PRIZM, SeisVision, Xsection are trademarks, registered trademarks or service marks of Landmark Graphics Corporation.

All other trademarks are the property of their respective owners.

Disclaimer

The information contained in this document is subject to change without notice and should not be construed as a commitment by LMKR. LMKR assumes no responsibility for any error that may appear in this manual. Some states or jurisdictions do not allow disclaimer of expressed or implied warranties in certain transactions; therefore, this statement may not apply to you.

Contents

- Introduction 1
- System Requirements 1
 - Software 1
 - Operating System 1
 - Hardware 1
 - Licenses 2
- Installation 2
 - Installing GVERSE Planner 2
 - Uninstalling GVERSE Planner 4
- Licensing 6
 - Configuring the License 6
- Third Party Applications 12
- International Trade Compliance 13
- Definitions 13
- Contacting LMKR Support 14

Introduction

LMKR is pleased to announce the release of the GVERSE™ Planner 2017.2 software. GVERSE Planner is integrated with GeoGraphix® and it is used to plan wells within GeoGraphix/Field Planner modules. It enables integrated well planning giving user the control to plan multiple wells. With GVERSE Planner, you can quickly visualize geological surfaces, create surveys and make changes to existing plans by adding target points on the go with the ability to export well plans for drilling. GVERSE Planner is part of the GVERSE application suite by LMKR (<http://www.lmkr.com/gverse>).

LMKR GVERSE consists of geoscience and engineering solutions focused on workflow optimization and enhancing productivity of teams working on diverse geological and geophysical projects.

This document provides the Install instructions for GVERSE Planner. It also lists the system requirements necessary to install and run the software.

System Requirements

The following sections list the system requirements for the Planner.

Software

The software that must be installed on the system running the Planner are as follows:

- GeoGraphix Discovery 2017.2
- LMKR License Management Tool 2016.1 for GVERSE Planner license
The LMKR License Management Tool (LMT) must be installed to configure the Planner license.
- Microsoft® .NET Framework 4.5.1
- Adobe Reader for selected help files (optional).

Operating System

To run the GVERSE Planner, you need one of the following operating systems installed on your system:

- Windows® 7 Professional x64
- Windows® 7 Enterprise x64
- Windows® 7 Ultimate x64
- Windows® 10 Professional x64
- Windows® 10 Enterprise x64

Note: It is recommend to use the latest Microsoft® service packs and security patches.

Hardware

- 2 GB RAM Minimum
- 4 GB RAM Recommended

Licenses

The following licenses are required to run the GVERSE Planner:

- GeoGraphix Discovery license version 2017.1
- GVERSE Planner license version 2017.1

Notes:

- Users upgrading from Planner 2017.1 to Planner 2017.2 do not require a new license. New users or users upgrading from other versions of Planner need a valid LMKR license.
- Refer to the LMKR Customer Support Portal (<http://support.lmkr.com/>) for up-to-date information on the requirements.

Installation

This section guides you through the installation and uninstallation processes of the Planner software.

Installing GVERSE Planner

Prior to installation, please make sure that the supported version of GeoGraphix is installed on the system.

To install the Planner software:

1. Download the software from the **LMKR Support Portal - Downloads** page (<http://support.lmkr.com/>).
2. Navigate to the location where you downloaded the installation setup.

Note: Before starting the installation, please make sure that all open applications are closed.

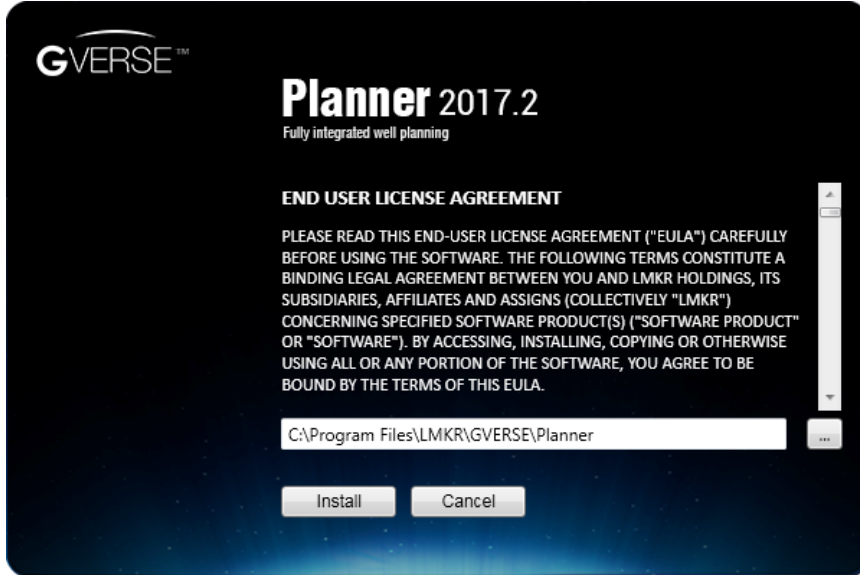
3. Double-click the Planner software setup executable file (EXE).

The Installation Wizard dialog displays.



4. Click **Next**.

The End User License Agreement dialog displays.



5. If you agree to the license agreement, then click **Install**.

The installation process initiates and the dialog displays the installation progress.



When installation is finished, the Exit dialog displays.



6. Click **Exit** to complete the installation.

Uninstalling GVERSE Planner

GeoGraphix must be closed before removing the Planner.

To uninstall the Planner software:

1. From the **Windows Start** menu, select **Control Panel**.

The Control Panel window displays.

2. From **Programs**, select **Uninstall a Program**.

The Programs and Features window displays.

3. In the list of applications, double-click **GVERSE Planner 2017.2**.

The dialog to uninstall the Planner software displays.



4. Click **Uninstall**.

The uninstall process initiates and the dialog displays the uninstallation progress.



Once the Planner is uninstalled from your system, the 'Uninstallation complete' message displays.



5. Click **Exit** to finish the uninstallation.

Licensing

Users upgrading from Planner 2017.1 to Planner 2017.2 do not require a new license. New users or users upgrading from other versions of Planner need a valid LMKR license. Please contact COS@lmkr.com to request a new license. Once you receive the license, use the LMT to configure it for a single system or to set up a network license on a server. This can be done either before or after the Planner software installation.

If a license file is not configured, then the Planner software does not open and an error message displays. In this case, you must configure the license using the LMT, and then relaunch the Planner software.

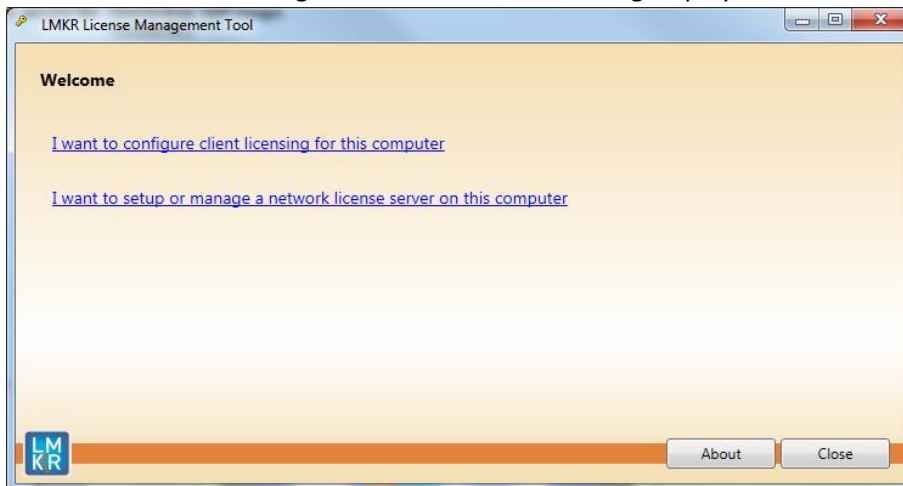
This section provides basic information on how to configure the Planner license using the LMT. For detailed information on how to install the LMT and configure the Planner license, please refer to the LMT installation document.

Configuring the License

To configure the Planner license:

1. Obtain your license file from COS@lmkr.com.
2. Download the LMT from the **LMKR Support Portal - Downloads** page (<http://support.lmkr.com/>).
3. Install the LMT. Once installed, launch the LMT from **Start>>All Programs>>LMKR>>Licensing>>License Management Tool**.

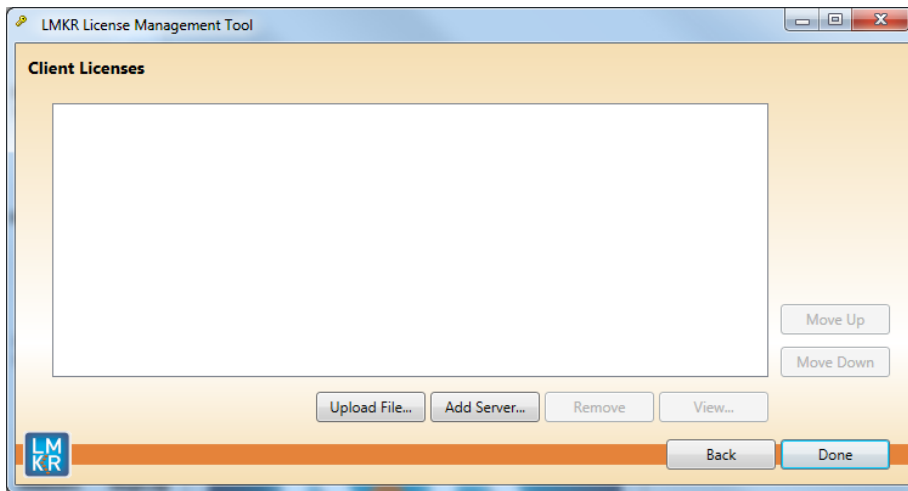
The LMKR License Management Tool Welcome dialog displays.



4. In this dialog, you can either:
 - Click **I want to configure client licensing for this computer** to [configure a client side license](#) on the current system.Or
 - Click **I want to setup or manage a network license server on this computer** to [setup an LMKR license server](#).

Configure a Client Side License

After clicking **I want to configure client licensing for this computer**, the following Client Licenses dialog displays.

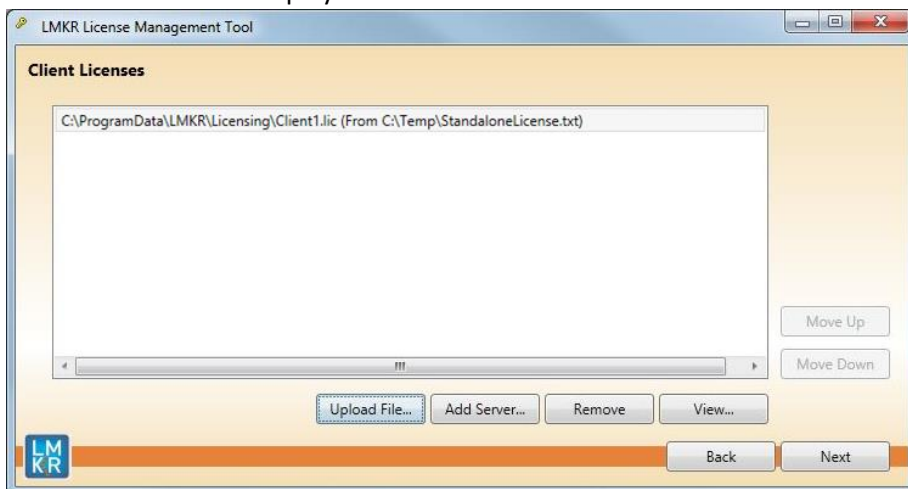


5. In this dialog, you can either:
 - Click **Upload file** to [select a standalone client license file](#).
 - Or
 - Click **Add Server** to [connect to an existing license server](#).

Select a Standalone Client License File

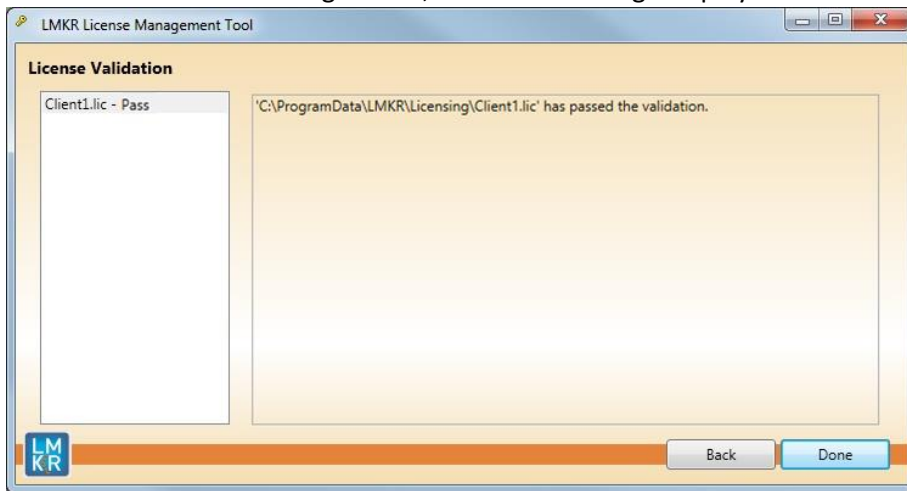
6. Click **Upload File**, browse to select the license you received from LMKR, and then click **Open**.

The selected license displays.



7. Click **Next**.

On successful license configuration, the 'Pass' message displays as shown in the image below.



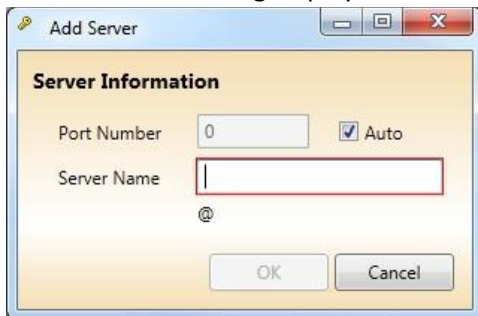
Note: If an error occurs, please contact support@lmkr.com for assistance.

8. Click **Done** when finished.

Connect to an Existing License Server

6. Click **Add Server**.

The Add Server dialog displays.

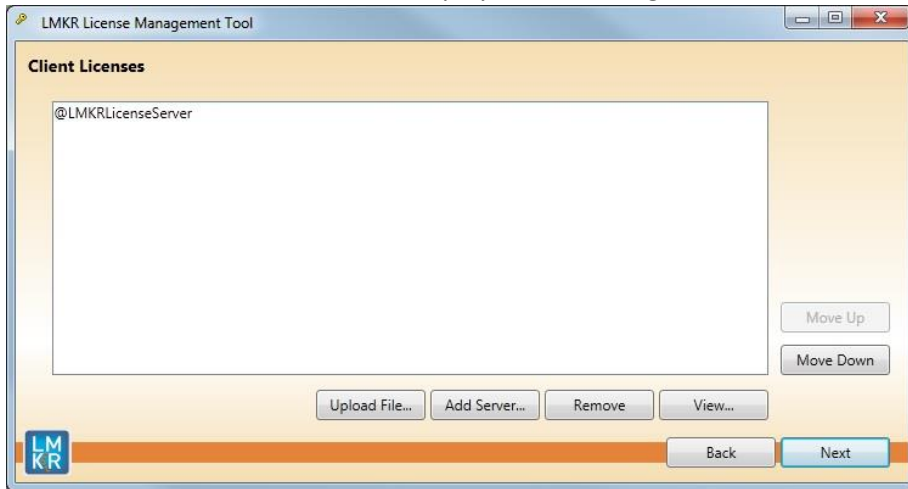


7. In this dialog, specify the following:
 - **Port Number:** If a specific port is required, clear the **Auto** check box, and then enter the port number that matches the port number being used by the LMKR license server (contact your network administrator for more information).
 - **Server Name:** Enter the LMKR license server name.

Note: By default, Auto is selected. This option is checked only when the license server uses a block of ports specific for Flexera FLEXnet Licensing ranging from 27000 to 27009.

8. Click **OK**.

The selected LMKR license server displays in this dialog.

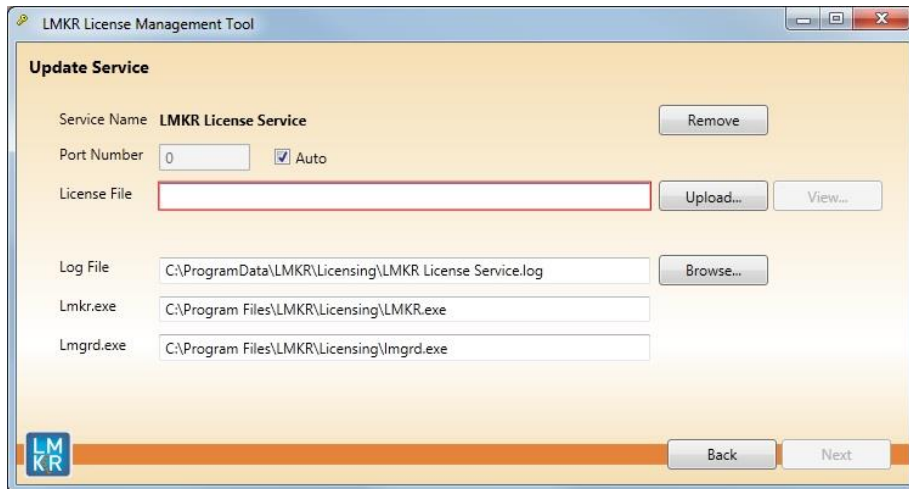


9. Click **Next**.
10. Click **Done** once finished.

Setup an LMKR License Server

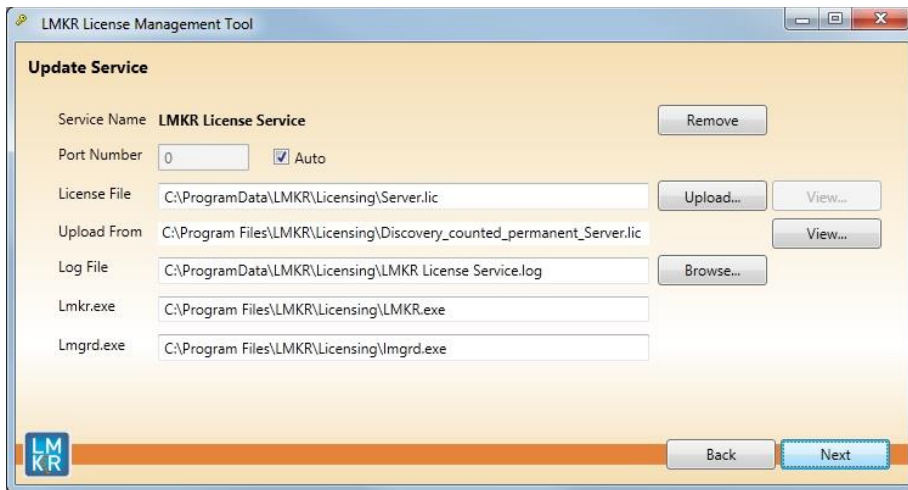
This is only performed on the system running the LMKR license server.

After clicking **I want to setup or manage a network license server on this computer**, the Update Service dialog displays.



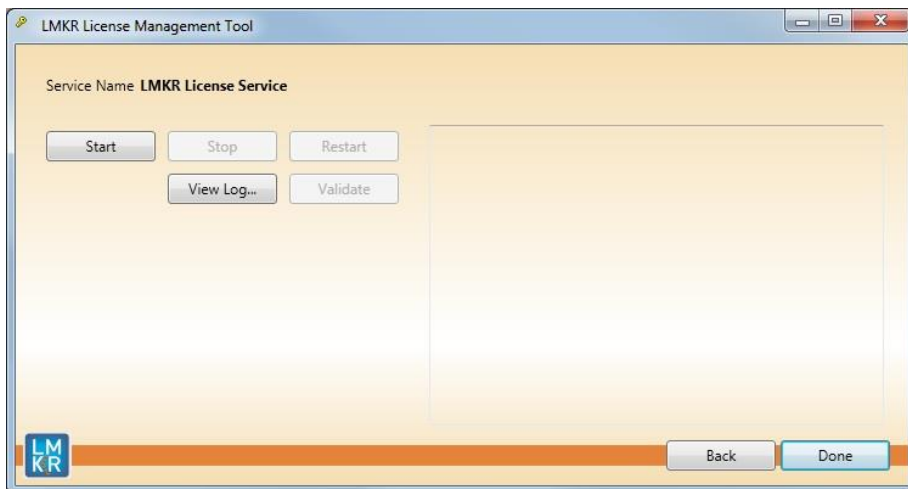
5. In this dialog, specify the following:

- **Port Number:** If a specific port is required by your network administrator, clear the **Auto** checkbox, and then enter the port number.
- **License File:** Click **Upload** to upload a new license file. The license file that is uploaded is renamed as Server.lic. This file is saved in the C:\ProgramData\LMKR\Licensing folder.
- **Log File:** Click **Browse** to select a location to save the log file.



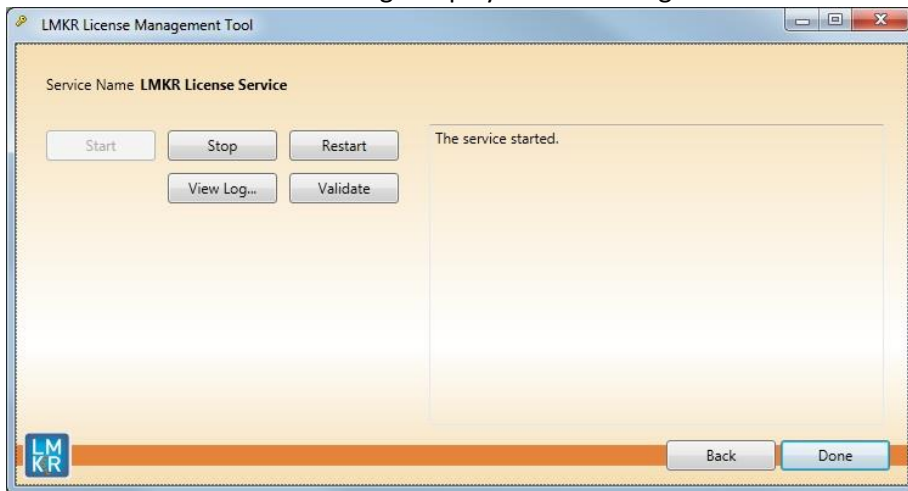
6. Click **Next**.

The LMKR License Server is then installed as a Windows Service.



7. Click **Start** to initiate the **LMKR License Service**.

The 'The service started' message displays on the dialog.



Note: If an error appears, contact support@lml.com for assistance.

8. Click **Done** once finished.

Third Party Applications

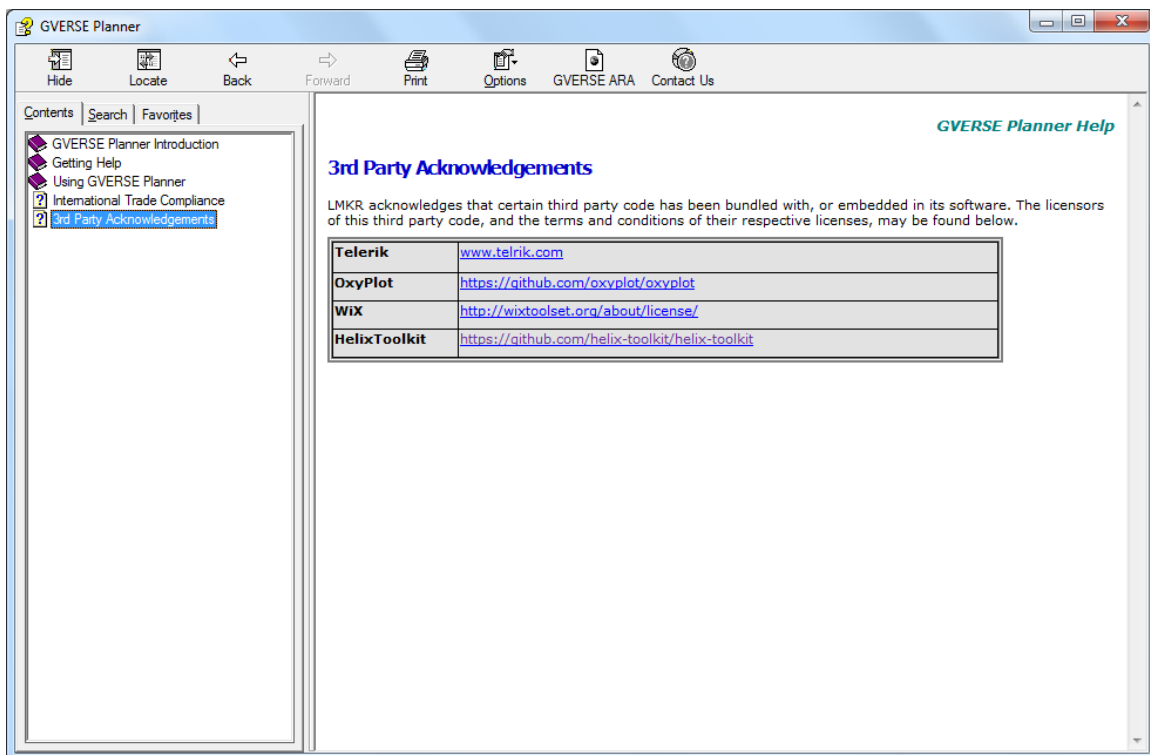
LMKR acknowledges that certain third party code has been bundled with, or embedded in, its software. The licensors of this third party code, and the terms and conditions of their respective licenses, may be found in the Planner help file.

To access the 3rd party license agreements:

1. In the GVERSE Planner Settings dialog, Help tab, click **Documentation**.

The Help window displays.

2. In the **Contents** pane, locate the **3rd Party Acknowledgements** help topic as shown in the image below.



International Trade Compliance

This application is manufactured or designed using U.S. origin technology and is therefore subject to the export control laws of the United States. Any use or further disposition of such items is subject to U.S. law. Exports from the United States and any re-export thereafter may require a formal export license authorization from the government. If there are doubts about the requirements of the applicable law, it is recommended that the buyer obtain qualified legal advice. These items cannot be used in the design, production, use, or storage of chemical, biological, or nuclear weapons, or missiles of any kind.

The ECCNs provided here (if available) represent LMKR's opinion of the correct classification for the product today (based on the original software and/or original hardware). Classifications are subject to change. If you have any questions or need assistance please contact us at support@lmkr.com.

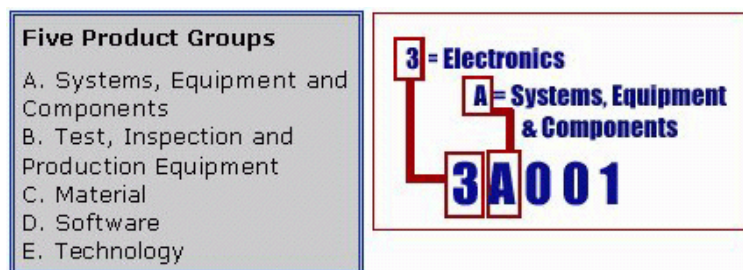
Under the U.S. Export Administration Regulations (EAR), the U.S. Government assigns your organization or client, as exporter/importer of record, responsibility for determining the correct authorization for the item at the time of export/import. Restrictions may apply to shipments based on the products, the customer, or the country of destination, and an export license may be required by the Department of Commerce prior to shipment. The U.S. Bureau of Industry and Security provides a website to assist you with determining the need for a license and with information regarding where to obtain help.

The URL is: <http://www.bis.doc.gov>.

Definitions

ECCN - Export Control Classification Number - The ECCN is an alpha-numeric code, e.g., 3A001, that describes a particular item or type of item, and shows the controls placed on that item. The CCL (Commerce Control List) is divided into ten broad categories, and each category is further subdivided into five product groups. The CCL is available on the [EAR Website](#).

The below illustration is a sample:



The ECCN number (if available) and License Type for this product are included in the table below. Also included is the date the table was last updated.

Product/Component/R5000	EAR Number	License	Last Updated On
GVERSE Planner	EAR99	EAR	11/23/2015

Contacting LMKR Support

LMKR is committed to providing the highest level of technical customer support in the industry. With an average tenure of more than thirteen years, our highly trained and experienced staff of technical analysts is comprised of geoscientists, engineers, land professionals, petrophysicists, and system specialists.

Please refer to our Customer Support timings mentioned below to ensure that you have access to our support analysts assigned to your region. When getting in touch with LMKR support, please remember that real-time support will not be available during bank holidays or after office hours. If you do get in touch with LMKR Support outside of work hours, please leave a voice message with a brief description of the issue that you are facing. Your voice message will be used to automatically create a support case for you. This will enable our analysts to attend to your issue and provide you with a resolution as soon as possible

North and South America	Europe, Middle East & Africa
<p>Monday – Friday 8am-6pm CST Toll Free (US/Canada) : +1 855 GGX LMKR (449 5657) Colombia : +57 1381 4908 United States : +1 303 295 0020 Canada : +1 587 233 4004 *Excluding bank holidays</p>	<p>UK Monday - Friday 8am - 5pm +44 20 3608 8042 *Excluding bank holidays</p> <p>UAE Sunday - Thursday (Dubai GMT+4) 8am - 5pm +971 4 3727 999</p> <p>Egypt Sunday - Thursday +0800-000-0635 *Excluding bank holidays</p>
Asia Pacific & Australian Continent	Southwest Asian countries
<p>Malaysia Monday - Friday (Kuala Lumpur GMT+8) 9am - 6pm +60 32 300 8777 *Excluding bank holidays</p>	<p>Pakistan Monday - Friday (Islamabad GMT+5) 9am - 6pm +92 51 209 7400 *Excluding bank holidays</p>

Helpful Links

Name	Website Address
LMKR Homepage	http://www.lmkr.com
LMKR GVERSE	http://www.lmkr.com/gverse/
LMKR Support Portal	http://support.lmkr.com