



# GVERSE GeoGraphix 2019.4 Service Pack 4

Latest Release

AVAILABLE FOR DOWNLOAD



Geophysics



Petrophysics



XSection



WellBase



GeoAtlas



QueryBuilder



WellXchangePlus

## GVERSE GeoGraphix 2019.4 - Service Pack 4 Highlights

New features have been introduced in GVERSE Geophysics, GVERSE Petrophysics, XSection, WellBase, GeoAtlas, QueryBuilder, and WellXchangePlus. This service pack also includes fixes to customer reported bugs in GVERSE Geophysics, GeoAtlas, WellBase, GVERSE Geomodeling, XSection, DepthRegistration, and ProjectExplorer.

### What's New in Release 2019.4 Service Pack 4

#### GVERSE Geophysics

- Navigation information for 2D seismic lines can be digitized directly from images.

#### GVERSE Petrophysics

- Well treatment data can be posted on PRT template
- Updated UI to support longer curve names

#### XSection

- The line of section can be positioned at bottom hole location for deviated wells
- Remarks from formation table can be viewed in WellBase on XSection cross sections

#### WellBase

- Remarks and qualifier fields added
- Multiple fields or columns for one or more wells can be protected in Grid View
- Row Change Date column has been added to the formations tab
- Improved well trajectories

#### GeoAtlas

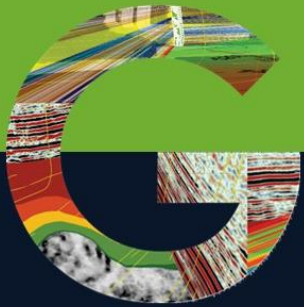
- Node decimation tool added
- Desired data point labels can be displayed on IsoMap layer

#### QueryBuilder

- Updated ZoneManager attributes in QueryBuilder

#### WellXchangePlus

- ZoneManager attributes can be transferred using WellXchangePlus



# GVERSE GeoGraphix 2019.4 Service Pack 4

Latest Release

AVAILABLE FOR DOWNLOAD



WellBase



Geophysics



Petrophysics



XSection



GeoAtlas



QueryBuilder



WellXchangePlus

## Fixed Issues

### GVERSE Geophysics

- When a new horizon was created, Rainbow color palette was assigned to it instead of the default color palette.
- In certain scenarios, scrolling arblines caused the application to crash due to a memory leak issue.

### WellBase

- The Batch Proposed Survey calculation did not honor any filters that were applied
- Users unable to edit a well that had picks from other users
- The Delete Data – Formations option name implied that formation names were being deleted from the Strat Column Manager (SCM)
- Decimal precision of well trajectories
- The Calc All Zones option in the Edit Zones and Zone Attributes dialog boxes calculates all zones and attributes, including the ones hidden or filtered by the user
- In some cases, importing data from the Spreadsheet Importer results in an error and empty log file
- Reopening a resized Strat Column Manager (SCM) dialog box does not preserve the previously set state and reverted to the default size
- In certain scenarios, data is not imported using the Spreadsheet Importer because some private picks are saved in different alphabetical case.

### GeoAtlas

- Size of the Zone Attributes dialog box when accessed from WellBase Layer Create dialog box
- In certain cases, creating/updating layers without selecting the Hyperlink check box still allocates memory for hyperlinks in the .dbf file.

### GVERSE Geomodeling

- The Calculate Well(s) in Zone option ignored calculations for previous zones.

### XSection

- When GVERSE Petrophysics template (.prt) was applied on XSection cross sections and downhole posted data was displayed, scrolling the mouse vertically caused a rendering issue which posted duplicate data
- Longer IsoMap layer and XSection cross section names were truncated in different dialog boxes.

### DepthRegistration

- If Top and Base depth lines were incorrectly defined in the input XML file, depth registered data was not imported properly and the depth registered images were not displayed in GVERSE Petrophysics, GVERSE Geomodeling, or XSection cross sections.

### ProjectExplorer

- In certain scenarios, newly created layers did not appear in ProjectExplorer and other GeoGraphix/GVERSE applications
- In some cases, the GeoGraphix Geosync service stopped working if one of the broadcasting servers was unreachable.

## Service Pack Dependencies

GeoGraphix 2019.4.3 must be installed prior to the installation of this service pack. Discovery on OpenWorks (DOW) is partially supported for this service pack, and may not work for all the workflows.

#### Disclaimer

This document cannot be guaranteed to be error-free. LMKR therefore does not accept any liability for any errors or omissions in the contents of this document or for the consequences of any actions taken on the basis of the information provided, unless that information is subsequently confirmed to be accurate in writing. Features of this software are subject to change.