

INTELLIGENT GEOSCIENCE W/ ACTIONABLE INSIGHTS

Latest Release

GVERSE® GeoGraphix®
Service Pack 2019.3.1

AVAILABLE FOR DOWNLOAD

GVERSE GeoGraphix 2019.3 - Service Pack 1 Highlights

2019.3 Service Pack 1 for GeoGraphix includes new features, bug fixes, and enhancements in GVERSE® Petrophysics, GVERSE® Geophysics, GeoAtlas, WellBase, QueryBuilder, DepthRegistration, ProjectExplorer.

What's New in Release 2019.3 Service Pack 1

GVERSE Petrophysics

Multi-Well CSV Export

Export log data for multiple wells in CSV format, which enables you to use data in other applications outside of GVERSE/GeoGraphix.

Post Treatment Data on Log Templates

Display treatment data (plugs, squeezes, washes etc.) for wells imported with the AccuMap format.

Import to Composite Curve Sets

Import log curves directly into new or existing composite curve sets in a well.

Delete Multiple Curves

Clean up the database faster with multicurve deletion for an individual well or the entire project.

Keep Core Analysis in Sync

Synchronize names assigned to core curves with WellBase core analysis fields.

Improved Multi-Well Export

Choose individual log curves to export, depth interval and units, and text-based output formats including CSV when exporting for multiple wells.

ProjectExplorer

Dipmeter Data Import History

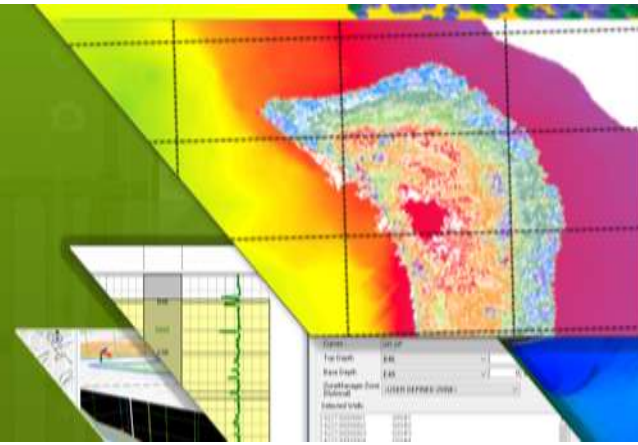
Imported dipmeter data history is now maintained in the Import History dialog box in ProjectExplorer.

INTELLIGENT GEOSCIENCE W/ ACTIONABLE INSIGHTS

Latest Release

GVERSE[®] GeoGraphix[®]
Service Pack **2019.3.1**

AVAILABLE FOR DOWNLOAD



GeoAtlas

Support for ESRI ArcGIS 10.8/10.8.1

All GeoGraphix applications support the latest ESRI ArcGIS 10.8 and 10.8.1 versions for workflows employing ESRI shapefiles.

Add Source to Formation Tops in Conditional Pies

Create conditional pie layers using only formation tops that belong to a particular source.

Color Coded Well Intervals

Apply thematic mapping on shapefile layers to show well interval types in desired colors.

WellBase

Import Well Data without Adding New Wells

There is a provision not to add new wells to the project database while importing well data using the Excel Spreadsheet feature.

Import Dipmeter and Interval Data from Spreadsheet

Dipmeter and interval data can now be brought into the database using the Import Spreadsheet feature.

User Defined Field Captions Honored during Data Import

Edited field captions in WellBase are honored in the following cases:

- Importing data using the Import Spreadsheet feature.
- Creating conditional pie layers.
- Exporting query results in QueryBuilder.

New Zone Tab View in WellBase

A new view has been added to the WellBase Information Manager which makes manipulating large amounts of attribute data much easier.

Zone and Attribute Filter in Tab View

Zones and attributes can be filtered in Tab View using the Zones and Attributes Filter.

Deleting Interval Data Types

Multiple Interval data types can now be deleted with a single click.

DepthRegistration

Export Raster Logs in MJ REG Format

Raster logs can also be exported to MJ REG format, which can then be imported into other applications

QueryBuilder

Filter Wells based on Interval Data

Wells can now be filtered on the basis of interval data in QueryBuilder

Service Pack Dependencies

GeoGraphix 2019.3 must be installed prior to the installation of this service pack. Discovery on OpenWorks (DOW) is partially supported for this service pack, and may not work for all the workflows.