

License Management Tool (LMT) 2019.3 Installation and Configuration

This document describes the installation and configuration of the License Management Tool (LMT) 2019.3, which is used with GVERSE and GeoGraphix software. This release is an upgrade to the License Management Tool and resolves a security vulnerability reported by Flexera in their FlexNet licensing software. LMT 2019.3 is fully compatible with GeoGraphix 2019.2.x and 2019.3.x. It is recommended that our current users upgrade to LMT 2019.3.

Installation Instructions

Download and run the License Management Tool packaged as an executable file (EXE).

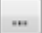
Note: Any installed instance of LMT must be uninstalled before installing LMT 2019.3.

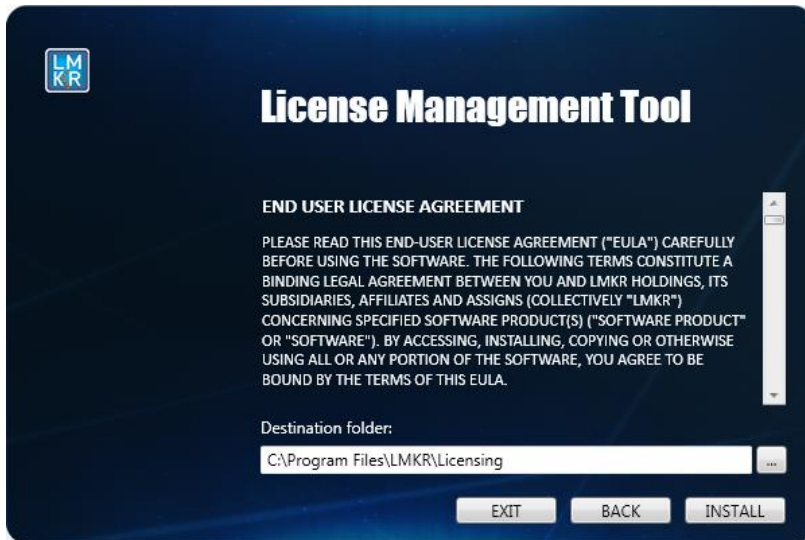
Note: Microsoft .NET 4.7.2 framework must be installed first. It is automatically installed by the LMT executable file if it is not already installed on your system.

1. Double-click the setup icon for the LMT application setup executable file (EXE).
The Installation Wizard dialog displays.



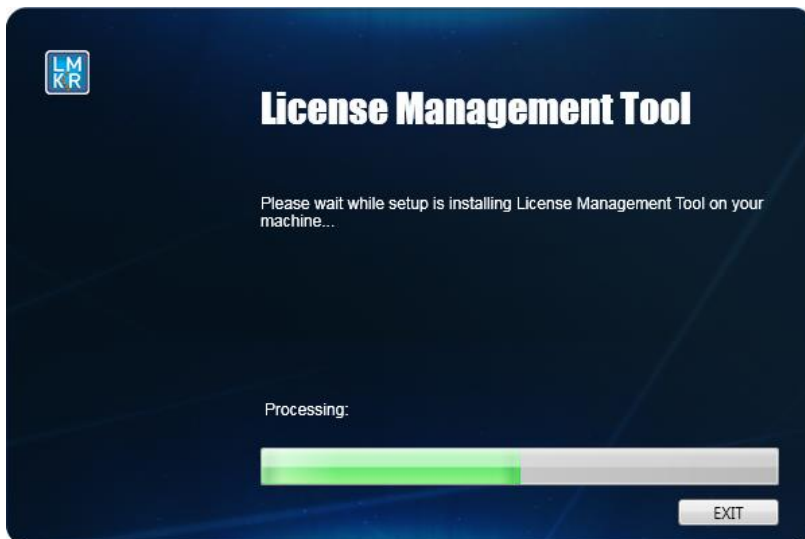
2. Click **Next**.

The END USER LICENSE AGREEMENT dialog displays. You can also change the default install location by clicking  placed in front of the **Destination Folder** field. This is a 64-bit application and should be installed to the default 64-bit location of “C:\Program Files” instead of “C:\Program Files (x86)”.



3. If you agree to the license agreement, then click **Install**.

The installation process initiates and the dialog displays the installation progress.



If Microsoft .NET 4.7.2 framework is not installed on your system, then it is automatically installed at this stage. When the installation finishes, the Exit dialog displays.



4. Click **Exit** to complete the installation.

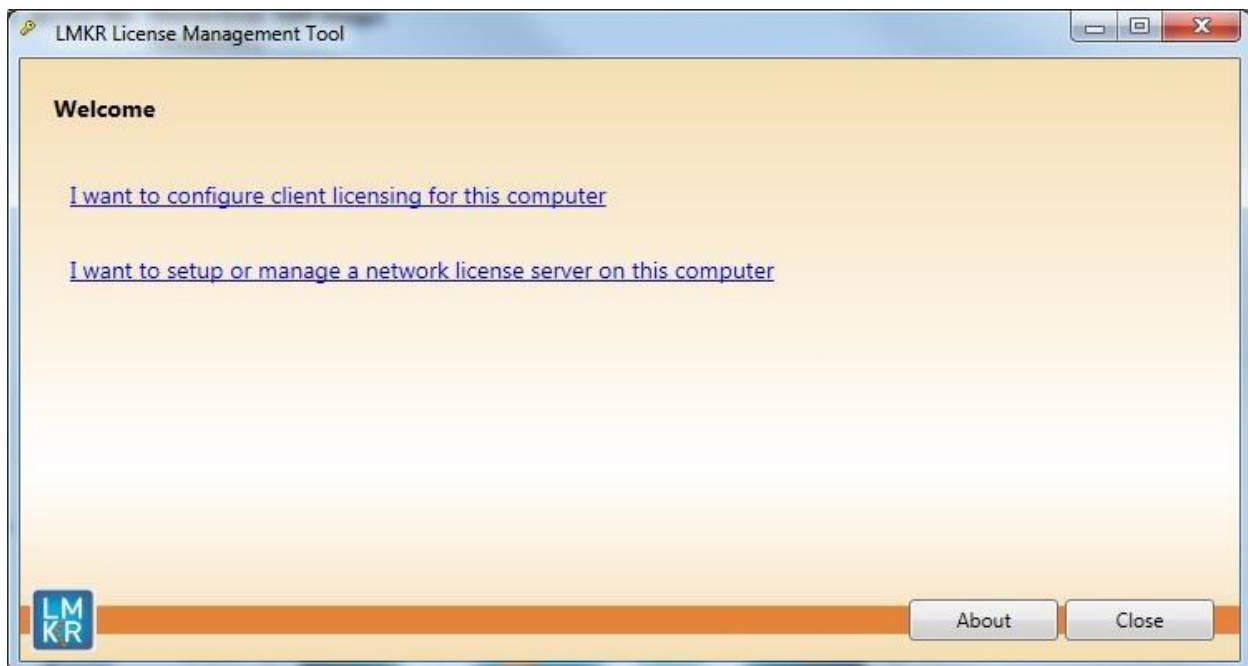
LMT Configuration

Configure LMT using a new LMKR License. To get a new license, visit our License Management webpage <https://www.gverse.com/LicenseManagement> to request a license. This release is an upgrade to the License Management Tool and resolves a security vulnerability reported by Flexera in their FlexNet licensing software. LMT 2019.3 is fully compatible with GeoGraphix 2019.2.x and 2019.3.x.

Note: GeoGraphix Discovery will be replacing previous Landmark LAM licenses with new LMKR licenses. LMT does not work with previous Landmark LAM licenses.

Launch LMT from **Start >> All Programs >> LMKR >> Licensing >> License Management Tool**. The

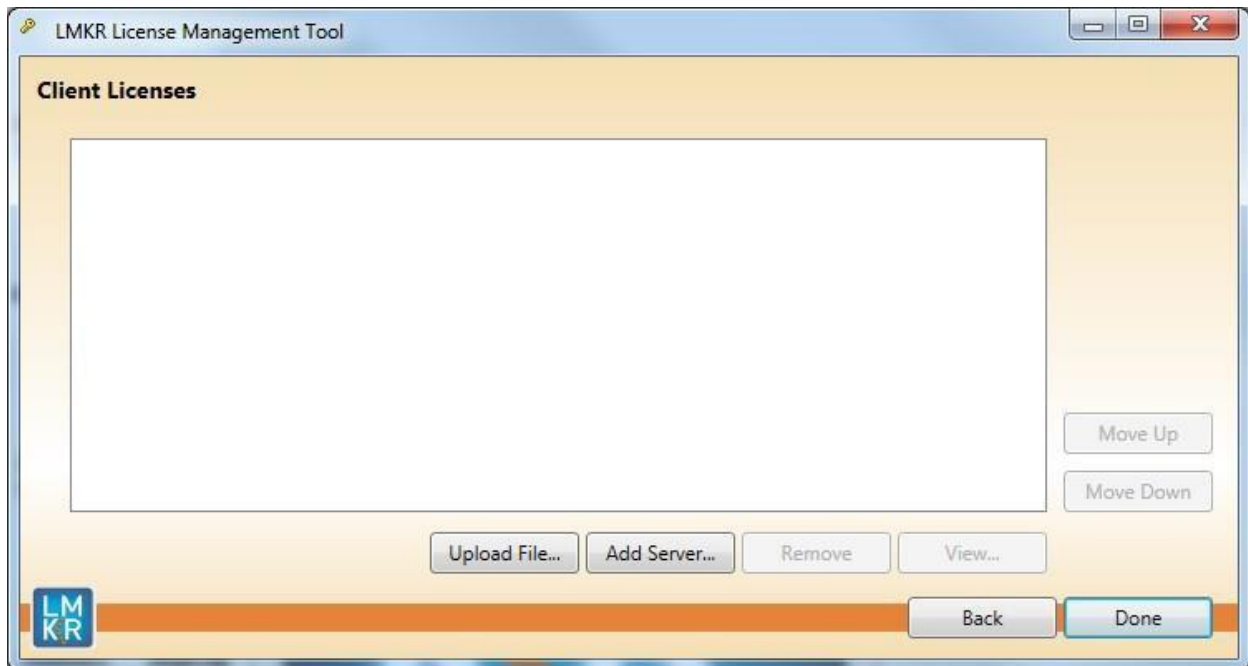
LMKR License Management Tool Welcome dialog displays.



- To configure a client license on the current machine, click the **I want to configure client licensing for this computer** link. Follow the steps below under **Configure a Client License**.
- To install or manage a LMKR network license server, click the **I want to setup or manage a network license server on this computer** link. Follow the steps below under **Install or Manage a LMKR License Server**.

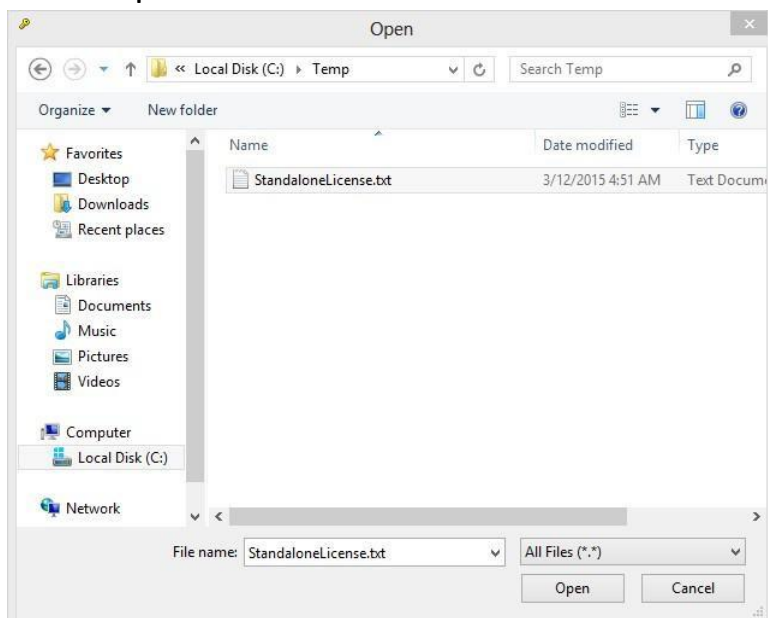
Configure a Client License

After selecting the **I want to configure client licensing for this computer** link the **Client Licenses** dialog displays.



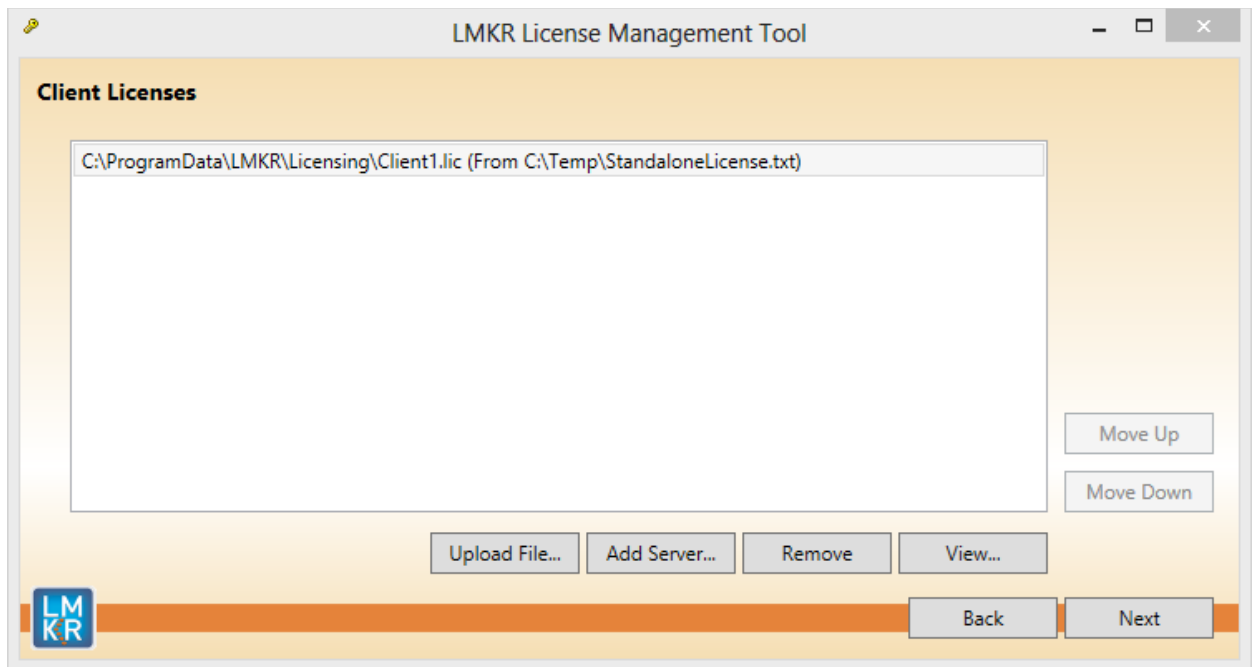
For a Standalone License File

1. Click the **Upload File...** button and browse to the location of the license file that was received:



Select the license file and click **Open**.

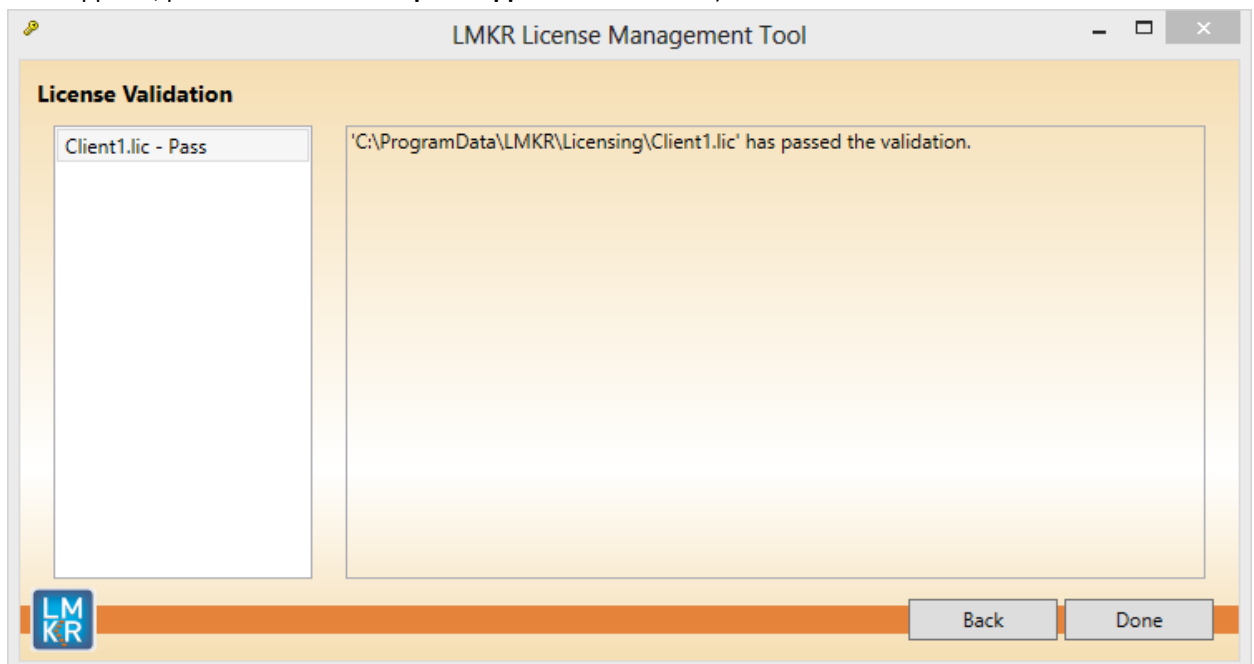
- The license file selected will be displayed:



- Select the **Remove** button to remove this license.
- Select the **View...** button to see the license file in Microsoft's Notepad.

- Click **Next** to install the license file.

The **Client Licenses** dialog will now look like this if the license was installed and validated. (Note: If an error appears, please contact **GeoGraphix Support** for assistance.)



4. Click **Done** to complete the installation.

For a Dongle License

1. Install the required FlexNet Dongle drivers, available at the default install location **C:\Program Files\LMKR\Licensing**.
2. Connect the FlexNet Dongle to the required machine and configure the relevant License file similar to configuring “**Standalone License File**”.

Note: For more details about Dongle version support/limitations and the required installer, refer to “_Flexnet_Dongle_Readme.txt” from the install folder (default is “C:\Program Files\LMKR\Licensing”).

For a License Server

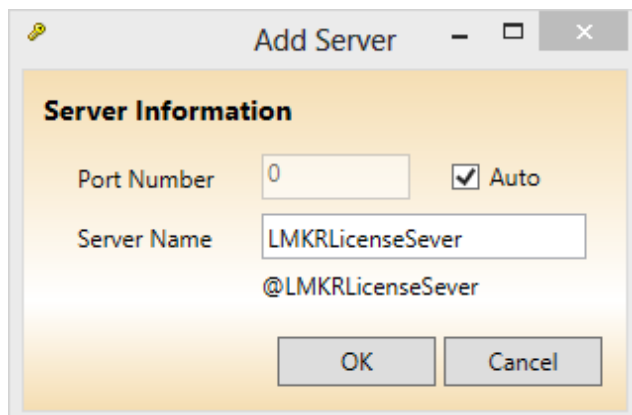
1. Select the **Add Server...** button to add name or IP address of the server running the LMKR License Server.

The **Add Server** dialog displays.



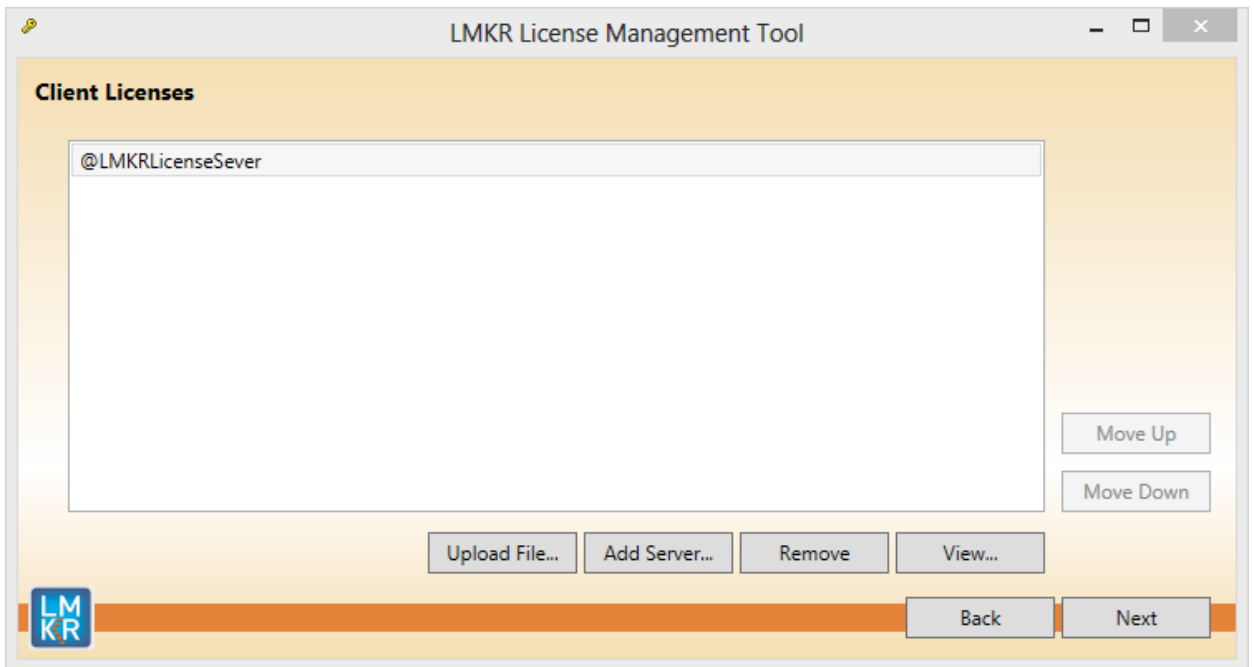
Note: By default, the **Auto** check box is selected where the license server will be using a block of ports specific for Flexera FLEXnet Licensing ranging from 27000 to 27009.

2. Type in the Server Name for the LMKR LMT server out on your network. If a specific port is required, deselect the **Auto** check box and type in the **Port Number** that matches the port number being used by the LMKR License server (contact your network Administrator for more information).



3. Click **OK**.

The **Client Licenses** dialog should now look like this:

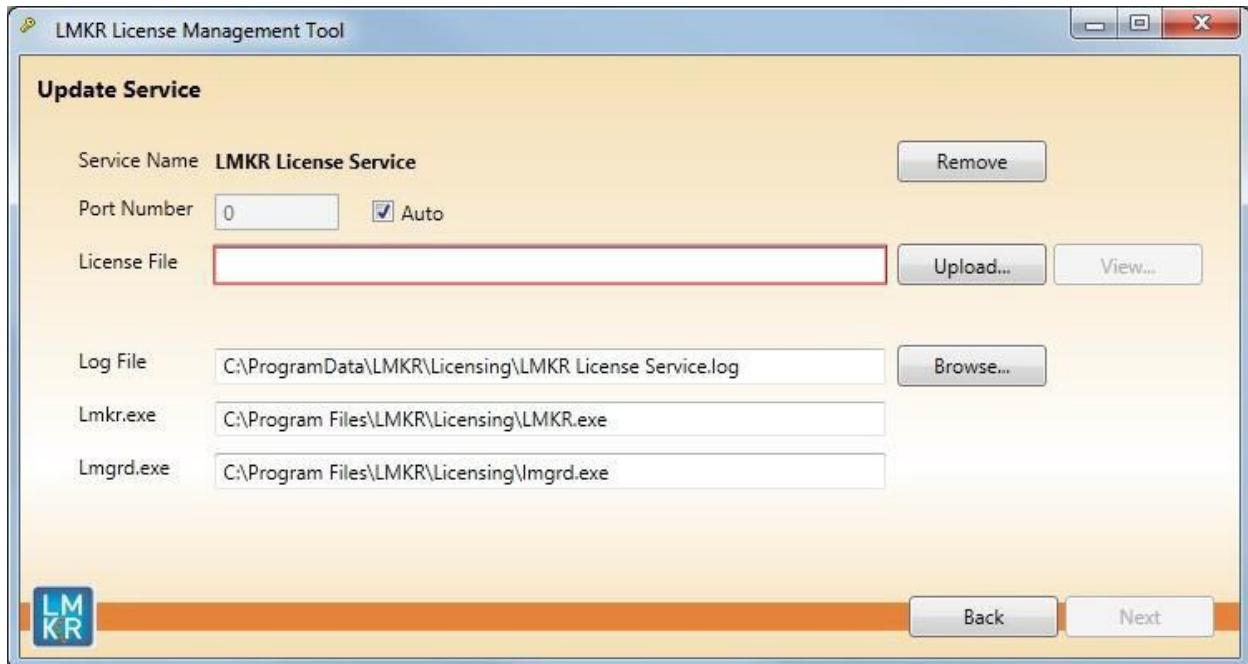


4. Click **Next** button to complete the installation.
5. Click **Done** button once finished.

Install or Manage a License Server

This is only performed on the PC that will be running the License Server.

After selecting the **I want to setup or manage a network license server on this computer** link, the **Setup New Service** dialog displays.



The screenshot shows the 'Update Service' dialog box in the LMKR License Management Tool. The dialog has a title bar with the text 'LMKR License Management Tool' and standard window controls. The main area is titled 'Update Service' and contains several fields and buttons:

- Service Name:** 'LMKR License Service' with a 'Remove' button to its right.
- Port Number:** A text box containing '0' and a checked 'Auto' checkbox.
- License File:** An empty text box with 'Upload...' and 'View...' buttons to its right.
- Log File:** A text box containing 'C:\ProgramData\LMKR\Licensing\LMKR License Service.log' with a 'Browse...' button to its right.
- Lmkr.exe:** A text box containing 'C:\Program Files\LMKR\Licensing\LMKR.exe'.
- Lmgrd.exe:** A text box containing 'C:\Program Files\LMKR\Licensing\lmgrd.exe'.

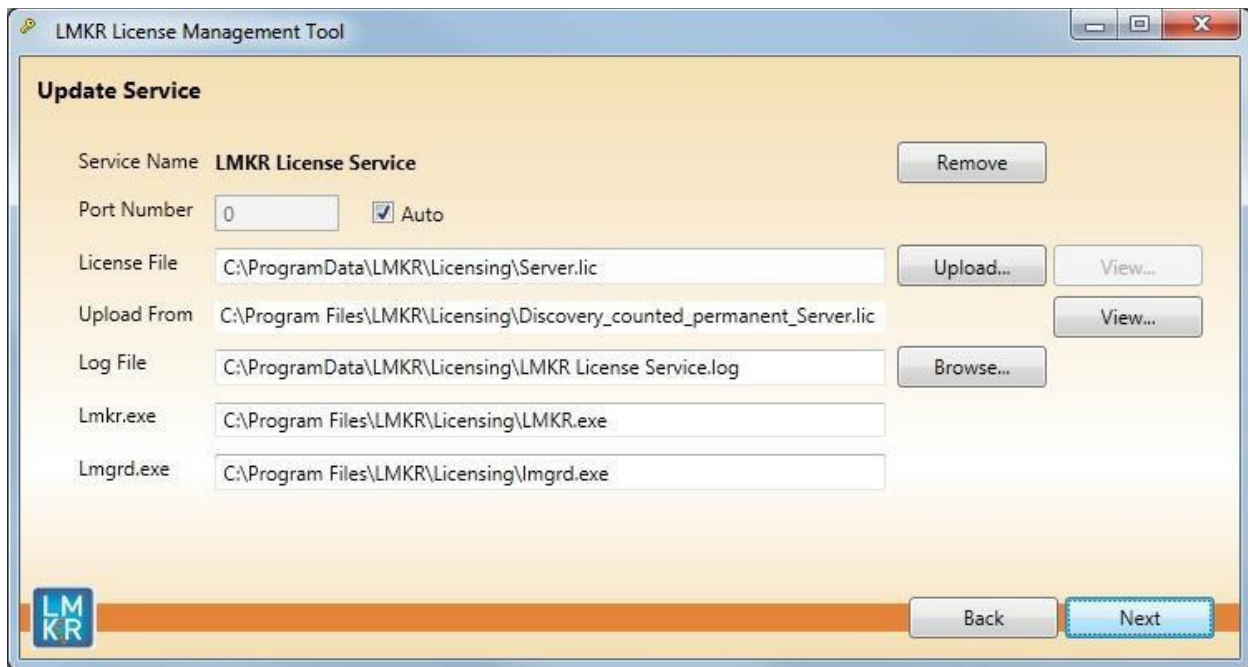
At the bottom left is the LMKR logo, and at the bottom right are 'Back' and 'Next' buttons.

Note: By default, the **Auto** check box is selected where the license server will be using a block of ports specific for Flexera FLEXnet Licensing ranging from 27000 to 27009.

1. If a specific port is desired by your network Administrator, deselect the **Auto** check box and type in the **Port Number**. Otherwise, leave the **Auto** check box selected.
2. Select the **Upload...** button to upload a new **License File** (the default license file will end with the extension of **.lic**)

(Note: The License File that is uploaded will be renamed to **Server.lic** and located in the "C:\ProgramData\LMKR\Licensing" folder. This cannot be changed.)

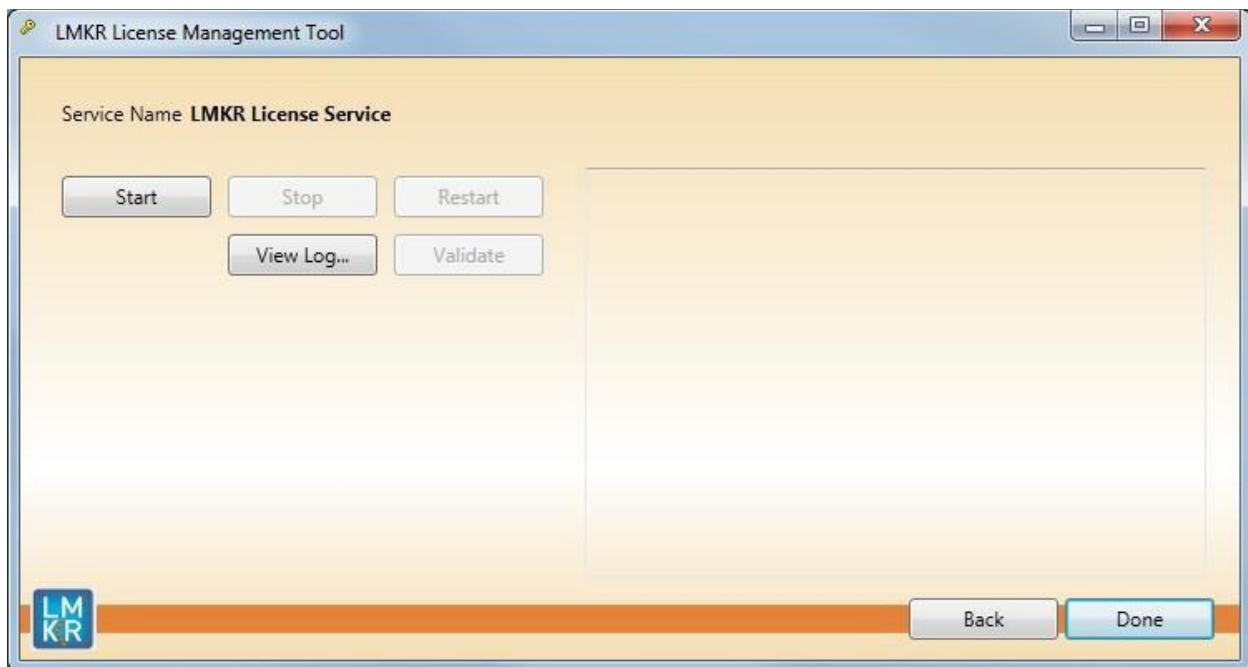
The **Setup New Service** dialog should look like this:



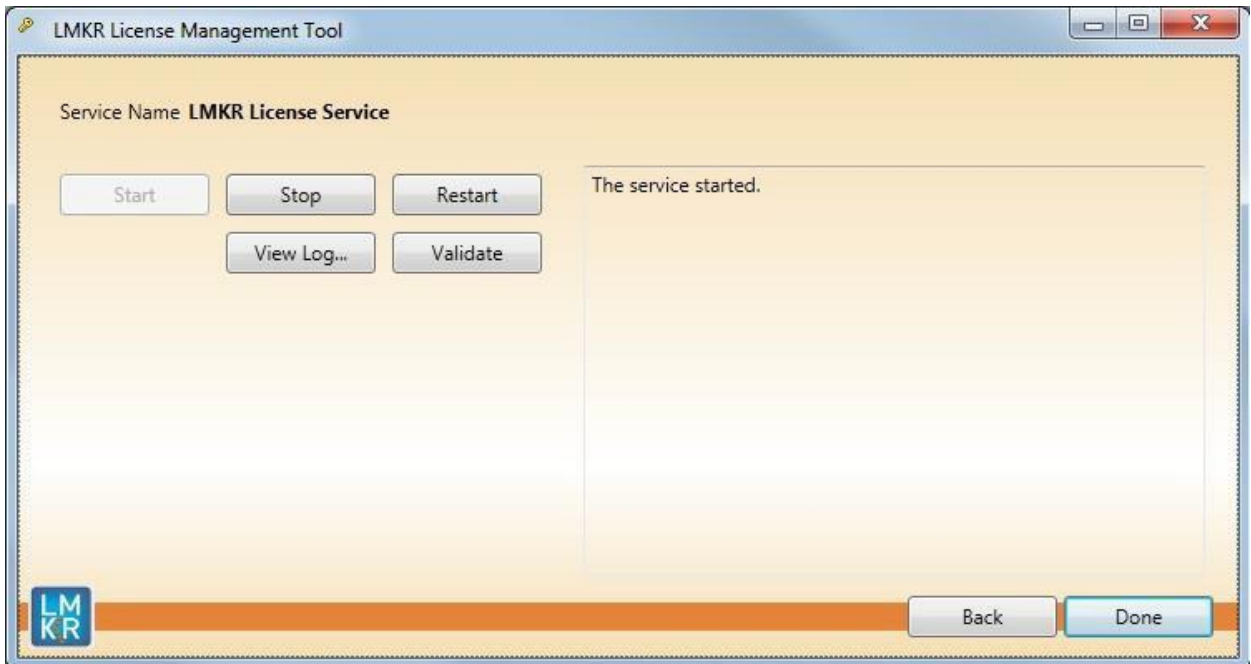
Select the **View...** button to see the license file in Microsoft's Notepad.

(Note: **Lmkr.exe** and **Lmgrd.exe** must be located in the "C:\ProgramData\LMKR\Licensing" folder. This cannot be changed.)

3. Click the **Next** button. The LMKR License Server will then be installed as a Windows Service. Once done, the **LMKR License Service** dialog displays.



4. Click the **Start** button to start the **LMKR License Service**. If no errors are reported, the **The service started** message displays.



- Click the **View Log...** button to view the **LMKR License Service.log** in Microsoft's Notepad
 - Click the **Stop** button to stop the LMKR License Service
 - Click the **Restart** button to stop and then immediately start the LMKR License Service
 - Click the **Validate** button to test if the **LMKR License Service** is able to Checkout a feature properly. The **LMKR License Service** dialog will display messages depending on whether the test was successful or not. (Note: If an error appears, contact **GeoGraphix Support** for assistance.)
5. Click the **Done** button once finished.