



# WebSteering

Stay ahead of the drill bit

## Release Notes for GVERSE WebSteering 2017.3



© 2001 - 2018 LMKR Holdings. All Rights Reserved.

This publication is copyright protected. No part of this publication may be copied or distributed, transmitted, transcribed, stored in a retrieval system, or translated into any human or computer language, in any form or by any means, electronic, magnetic, manual, or otherwise, or disclosed to third parties without the express written permission of:

**LMKR Holdings**

Corporate Headquarters  
Unit No. B1501, Latifa Tower  
Sheikh Zayed Road, Dubai, UAE  
P.O. Box 62163  
Phone: +971 4 372 7900  
FAX: +971 4 358 6386  
Internet: [www.lmkr.com](http://www.lmkr.com)

**Trademark Notice**

**GVERSE® is a registered Trademark of LMKR. WebSteering, Predict3D, Attributes, Connect, Planner, Inversion, Geomodeling, Geophysics, Field Planner and NOW are trademarks of LMKR.**

DecisionSpace, Discovery, GeoGraphix (stylized), GeoGraphix Exploration System, GeoLink, GES, GESExplorer, GMAplus, IsoMap, LeaseMap, LogM, OpenWorks, OpenWorks Well File, PRIZM, SeisVision, XSection are trademarks, registered trademarks or service marks of Landmark Graphics Corporation.

All other trademarks are the property of their respective owners.

**Disclaimer**

The information contained in this document is subject to change without notice and should not be construed as a commitment by LMKR. LMKR assumes no responsibility for any error that may appear in this manual. Some states or jurisdictions do not allow disclaimer of expressed or implied warranties in certain transactions; therefore, this statement may not apply to you.

# Contents

- Introduction ..... 1
  - What is GVERSE WebSteering? ..... 1
    - Main Features ..... 1
    - Benefits ..... 2
- System Requirements ..... 2
  - Software ..... 2
  - Operating System ..... 2
  - Hardware ..... 2
  - Licenses ..... 3
- New Features ..... 3
- Third Party Applications ..... 6
- International Trade Compliance ..... 7
- Definitions ..... 7
- Contacting LMKR Support ..... 8



# Introduction

LMKR is pleased to announce the release of the GVERSE® WebSteering 2017.3 application. This document provides an introduction to the WebSteering application features and benefits. It also lists the system requirements necessary to install and run the application.

## What is GVERSE WebSteering?

GVERSE WebSteering application is designed specifically to help geoscientists' geosteer horizontal wells in thin pay zones and to direct the bit in real time.

The GVERSE WebSteering application installs into the web browser with a few button clicks. Then it's a simple process to load LWD and surveys from the rig, add type logs and subsurface grids from GeoGraphix®, and start steering. At any point during this process, LWD data can be sent back to GeoGraphix for further analysis using GeoGraphix's feature-rich suite of tools. GVERSE WebSteering runs even when disconnected from your corporate network so whether you are in the office or working remotely, you can define your target surface and send updated drilling targets to the rig. The WebSteering application is part of the GVERSE application suite by LMKR (<http://www.lmkr.com/gverse>).

LMKR GVERSE consists of geoscience and engineering solutions focused on workflow optimization and enhancing productivity of teams working on diverse geological and geophysical projects. These applications help cut the processing time required for interpretations resulting in fast, easy to use scalable tools that are inter-operable with other known geoscience software suites; enabling a connected multi skilled workforce.

## Main Features

The main features of the WebSteering application are as follows:

- A web-based application designed to work when it is connected to a GeoGraphix server as well as when it is not.
- Ability to help geologists build a more accurate target surface that can be used to drill the next well.
- This application can also be connected to a WITSML Server. Therefore, data loaded from the rig can be directly saved to GeoGraphix.
- Easy installation.
- Technical Geosteering based on Relative Stratigraphic Depth concepts (no distortion like vertical section projection).
- Capable of converting an LAS file into a Type Log.
- Automatically calculates True Vertical Depth (TVD), Northing, Easting and Vertical Sections from MD, Inclination and Azimuth.
- Directional survey calculations and related minimum-curvature interpolations for geosteering and graphing.
- Graphic display of data with full zooming capabilities and coupling of graphs including LWD, Wellbore directional survey data, and Type Log.
- Segment addition and management.

- Display can be customized e.g. line colors, min/max scale limits, linear scale format etc.
- Has the capability to process files that have been dragged-and-dropped on the interface.
- Requires GeoGraphix® Discovery.

## Benefits

The GVERSE WebSteering application offers you the following benefits:

- **Flexible:** Flexibility in the location where you geosteer a horizontal well from – in the office, at home, or in the field
- **Simple:** Simplified Data Entry for LWD and survey data using drag-and-drop or WITSML. Data is transferred into LMKR GeoGraphix projects via the web with one button click.
- **Integration with GeoGraphix:** Integration with GeoGraphix applications, including selection of type logs and gridded surfaces from the GeoGraphix database, and use of Web Geosteering interpretations in GeoGraphix to produce more accurate target surfaces.

## System Requirements

The following sections list the system requirements for the WebSteering application.

### Software

The software that must be installed on the system running the WebSteering application are as follows:

- GeoGraphix Discovery 2016.1.5, 2017.1 with hotfix (HF1), 2017.2 or 2017.3
- Microsoft .NET Framework 4.2 or greater
- LMKR License Management Tool 2016.1 for WebSteering license  
The LMKR License Management Tool (LMT) must be installed to configure the WebSteering license.
- Adobe Reader for selected help files (optional)

**Note:** It is recommended that you run the WebSteering application on Internet Explorer 11.x.x and Google Chrome 70.x.x.x or later.

### Operating System

To run the WebSteering application, you need the Windows® 7 or Windows® 10 operating systems installed on your system.

**Note:** It is recommended to use the latest Microsoft service packs and security patches.

### Hardware

The hardware requirements for the WebSteering application are as follows:

- Quad 2.4 GHz 64-bit Intel® class or better
- 4 GB RAM or greater
- 1024x768 graphics resolution

## Licenses

The following licenses are required to run the WebSteering application:

- GVERSE WebSteering 2017.3 requires license version 2017.1
- GeoGraphix Discovery 2016.1.5 requires license version 2016.1
- GeoGraphix Discovery 2017.1/2017.2/2017.3 requires license version 2017.1

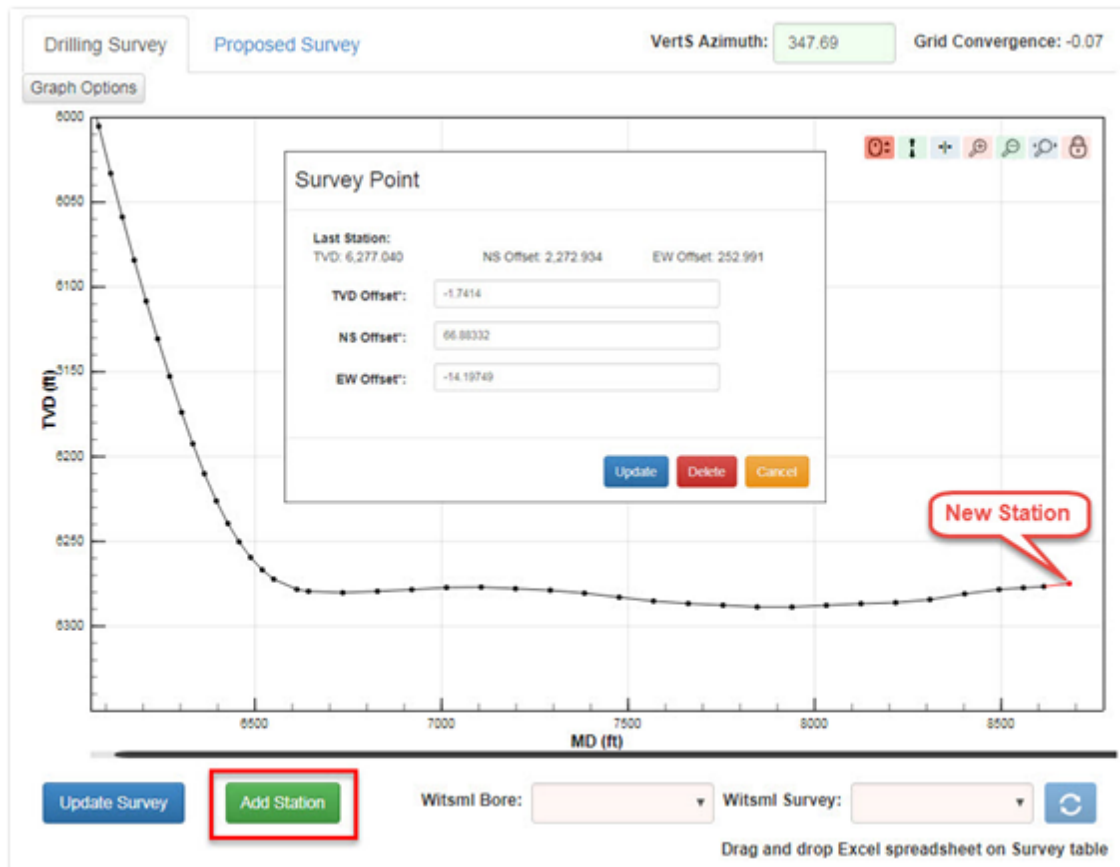
**Note:** Refer to the LMKR Customer Support > Knowledge Center > [System Requirements](#) page for up-to-date information on the requirements.

## New Features

This section contains a brief description of the exciting new features included in this release.

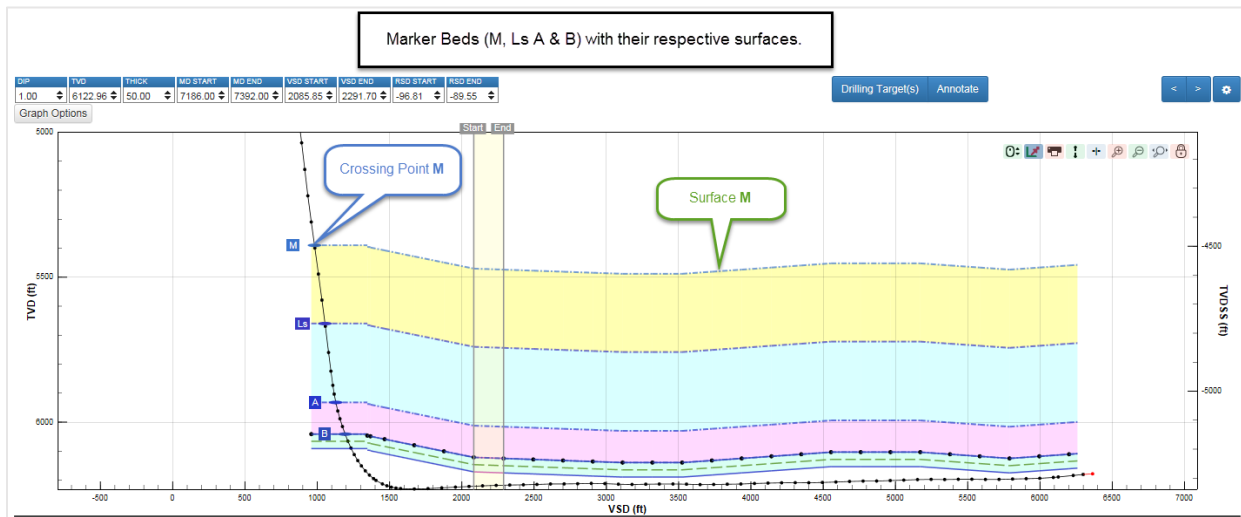
### Adding an Additional Survey Point to Project the LWD Curve beyond the Bit

An additional survey point can be added and projected along the same path as the last survey point in the **Survey** tab on the **Dashboard**. After clicking **Add Station**, the **dialog** displays the TVD, NS Offset, and EW offset of the previous survey point with an option to add a new survey point. The added survey point can be updated and deleted also. This survey point is automatically added to the **Survey** track of the **Geosteering** page. This feature is useful when the survey MD lags the LWD depth during drilling and allows the LWD curve to be displayed to its full depth while geosteering.



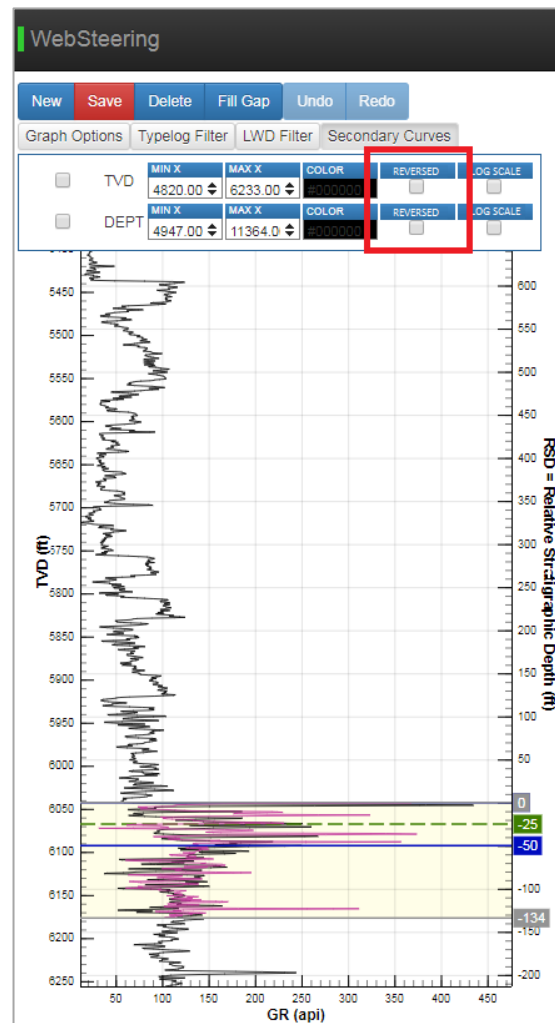
## Adjusting the Marker Bed Surfaces before the Landing Point

After adding marker beds in the **Surfaces** tab of the Dashboard, the correct locations and depths of the selected marker beds are now visible along the wellbore in the **Geosteering** page.



## Displaying Secondary Logs in Reversed Scales

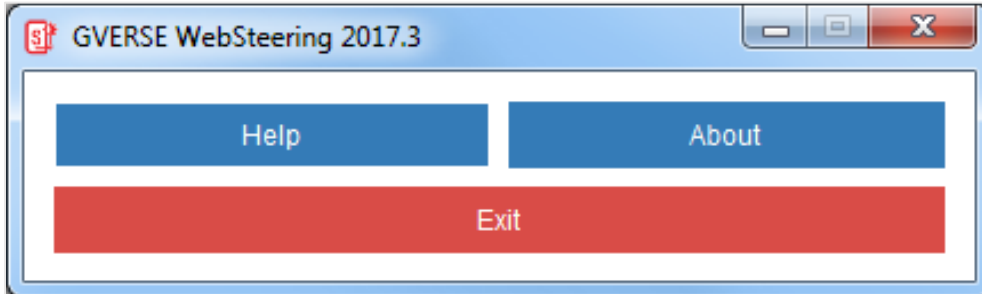
Select the **REVERSED** checkbox from graph options to display the selected curve in reverse scale. This feature is especially useful for porosity curves.



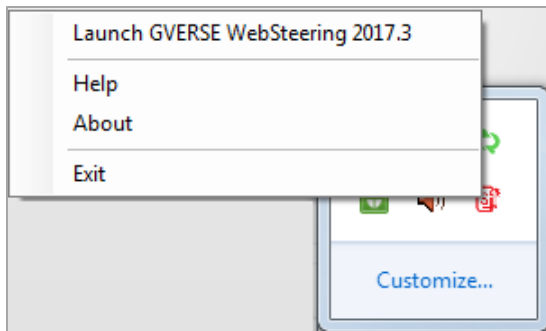


## New GVERSE WebSteering Launching Option

A New GVERSE WebSteering 2017.3 window appears on the desktop after launching GVERSE WebSteering. This window allows the user to access the GVERSE WebSteering online help, see the release version, and exit the current session.



The application can be re-launched from the system tray without exiting from the GVERSE WebSteering application.



## New Licensing Options

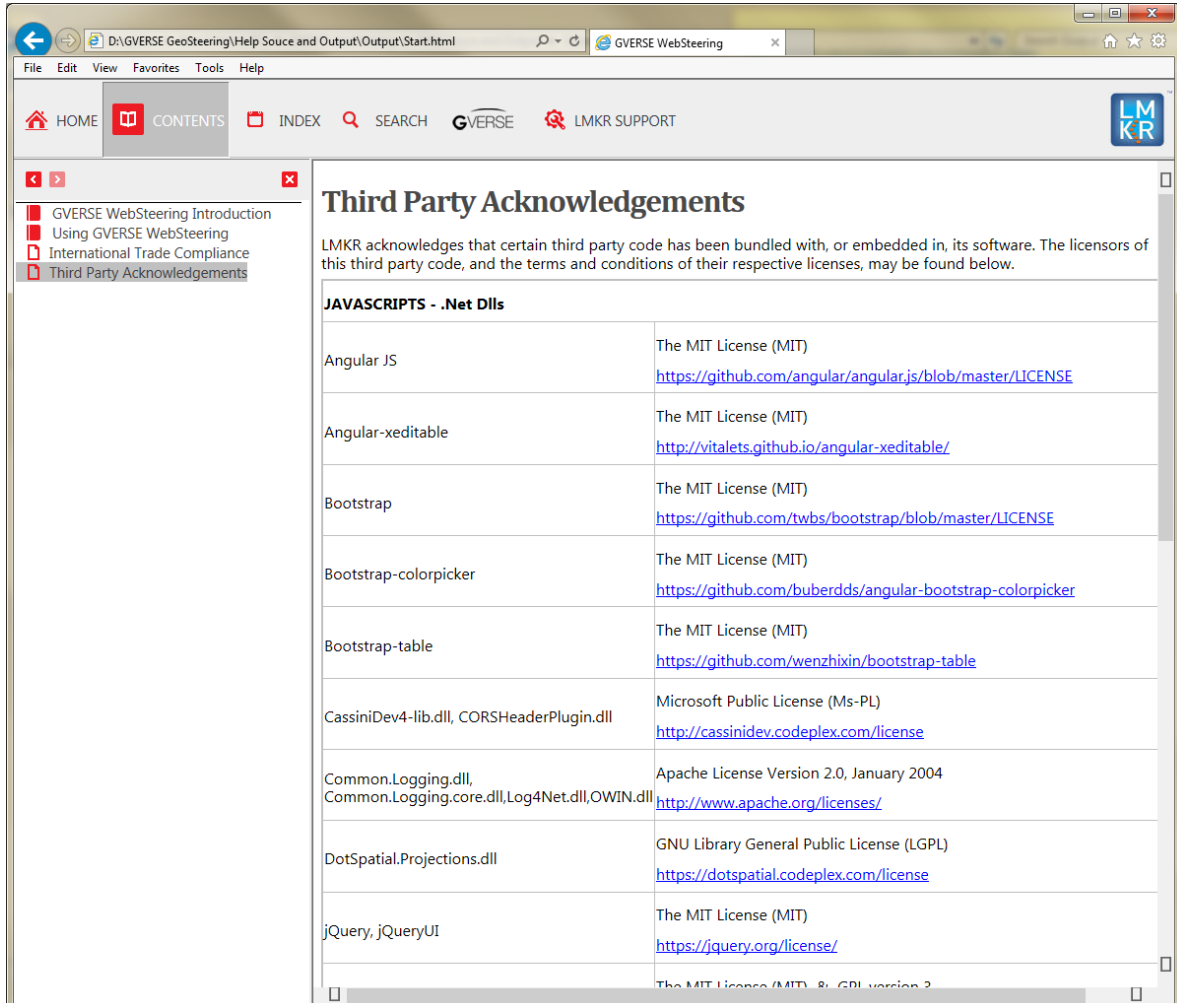
GVERSE Websteering 2017.3 can now be licensed on the network or using a pay-per-use through GVERSE Go.

# Third Party Applications

LMKR acknowledges that certain third party code has been bundled with, or embedded in its software. The licensors of this third party code, and the terms and conditions of their respective licenses, may be found in the WebSteering application Help file.

To access the third party license agreements:

1. Click **Help** from the main menu bar.
2. Open the **Third Party Acknowledgements** help topic.



## International Trade Compliance

This application is manufactured or designed using U.S. origin technology and is therefore subject to the export control laws of the United States. Any use or further disposition of such items is subject to U.S. law. Exports from the United States and any re-export thereafter may require a formal export license authorization from the government. If there are doubts about the requirements of the applicable law, it is recommended that the buyer obtain qualified legal advice. These items cannot be used in the design, production, use, or storage of chemical, biological, or nuclear weapons, or missiles of any kind.

The ECCNs provided (if available) here represent LMKR's opinion of the correct classification for the product today (based on the original software and/or original hardware). Classifications are subject to change. If you have any questions or need assistance please contact us at [support@lmkr.com](mailto:support@lmkr.com).

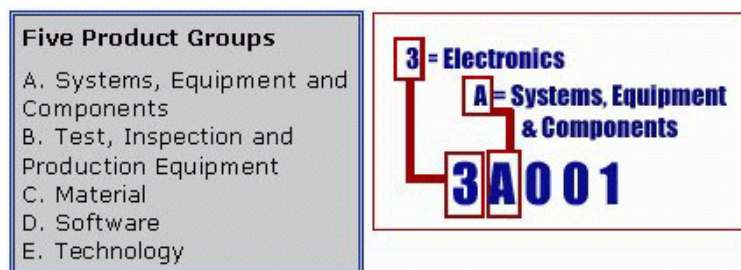
Under the U.S. Export Administration Regulations (EAR), the U.S. Government assigns your organization or client, as exporter/importer of record, responsibility for determining the correct authorization for the item at the time of export/import. Restrictions may apply to shipments based on the products, the customer, or the country of destination, and an export license may be required by the Department of Commerce prior to shipment. The U.S. Bureau of Industry and Security provides a website to assist you with determining the need for a license and with information regarding where to obtain help.

The URL is: <http://www.bis.doc.gov>.

## Definitions

ECCN - Export Control Classification Number - The ECCN is an alpha-numeric code, e.g., 3A001, that describes a particular item or type of item, and shows the controls placed on that item. The CCL (Commerce Control List) is divided into ten broad categories, and each category is further subdivided into five product groups. The CCL is available on the [EAR Website](#).

The following illustration is a sample:



The ECCN number (if available) and License Type for this product are included in the table below. Also included is the date the table was last updated.

Product/Component/R5000	EAR Number	License	Last Updated On
GVERSE WebSteering	EAR99	EAR	11/23/2015

## Contacting LMKR Support

LMKR is committed to providing the highest level of technical customer support in the industry. With an average tenure of more than thirteen years, our highly trained and experienced staff of technical analysts is comprised of geoscientists, engineers, land professionals, petrophysicists, and system specialists.

Please refer to our Customer Support timings mentioned below to ensure that you have access to our support analysts assigned to your region. When getting in touch with LMKR support, please remember that real-time support will not be available during bank holidays or after office hours. If you do get in touch with LMKR Support outside of work hours, please leave a voice message with a brief description of the issue that you are facing. Your voice message will be used to automatically create a support case for you. This will enable our analysts to attend to your issue and provide you with a resolution as soon as possible

North and South America	Europe, Middle East & Africa
<p>Monday – Friday 8 am-6 pm CST* Toll Free (US/Canada) : +1 855 GGX LMKR (449 5657)</p> <p><b>Colombia:</b> +57 1381 4908</p> <p><b>United States:</b> +1 303 295 0020</p> <p><b>Canada:</b> +1 587 233 4004</p> <p><i>*Excluding bank holidays</i></p>	<p><b>UK:</b> Monday - Friday 8 am – 5 pm* +44 20 3608 8042</p> <p><b>UAE:</b> Sunday - Thursday (Dubai GMT+4) 8 am – 5 pm* +971 4 3727 999</p> <p><i>*Excluding bank holidays</i></p>
Asia Pacific & Australian Continent	Southwest Asian countries
<p><b>Malaysia:</b> Monday - Friday (Kuala Lumpur GMT+8) 9 am – 6 pm* +60 32 300 8777</p> <p><i>*Excluding bank holidays</i></p>	<p><b>Pakistan:</b> Monday - Friday (Islamabad GMT+5) 9 am – 6 pm* +92 51 209 7400</p> <p><i>*Excluding bank holidays</i></p>

## Helpful Links

Name	Website Address
LMKR Homepage	<a href="http://www.lmkr.com">http://www.lmkr.com</a>
LMKR GVERSE	<a href="http://www.lmkr.com/gverse">http://www.lmkr.com/gverse</a>
LMKR Support Portal	<a href="http://support.lmkr.com">http://support.lmkr.com</a>