



Geomodeling

Fully Integrated 3D Interpretation

Release Notes

GVERSE Geomodeling 2017.1



© 2001 - 2017 LMKR Holdings. All Rights Reserved.

This publication is copyright protected. No part of this publication may be copied or distributed, transmitted, transcribed, stored in a retrieval system, or translated into any human or computer language, in any form or by any means, electronic, magnetic, manual, or otherwise, or disclosed to third parties without the express written permission of:

LMKR Holdings

Corporate Headquarters
Unit No. B1501, Latifa Tower
Sheikh Zayed Road, Dubai, UAE P.O.
Box 62163
Phone: +971 4 372 7900
FAX: +971 4 358 6386
Internet: www.lmkr.com

Trademark Notice

GVERSE™ WebSteering, Predict3D, Attributes, Connect, Planner, Inversion, Geomodeling are trademarks of LMKR.

DecisionSpace, Discovery, GeoGraphix (stylized), GeoGraphix Exploration System, GeoLink, GES, GESXplorer, GMAplus, IsoMap, LeaseMap, LogM, OpenWorks, OpenWorks Well File, PRIZM, SeisVision, Xsection are trademarks, registered trademarks or service marks of Landmark Graphics Corporation.

All other trademarks are the property of their respective owners.

Disclaimer

The information contained in this document is subject to change without notice and should not be construed as a commitment by LMKR. LMKR assumes no responsibility for any error that may appear in this manual. Some states or jurisdictions do not allow disclaimer of expressed or implied warranties in certain transactions; therefore, this statement may not apply to you.

Contents

- Introduction 1
 - What is GVERSE Geomodeling? 1
 - Main Features 1
- System Requirements 5
 - Software 5
 - Operating System 5
 - Hardware 5
 - Licenses 5
- Contacting LMKR Support 6

Introduction

LMKR is pleased to announce the release of the GVERSE™ Geomodeling 2017.1. GVERSE Geomodeling.

This document provides an introduction to the Geomodeling features and benefits. It also lists the system requirements necessary to install and run the software.

What is GVERSE Geomodeling?

GVERSE Geomodeling introduces an integrated environment for geological/reservoir modeling that incorporates existing mapping and cross section features of smartSECTION® with the 3D view.

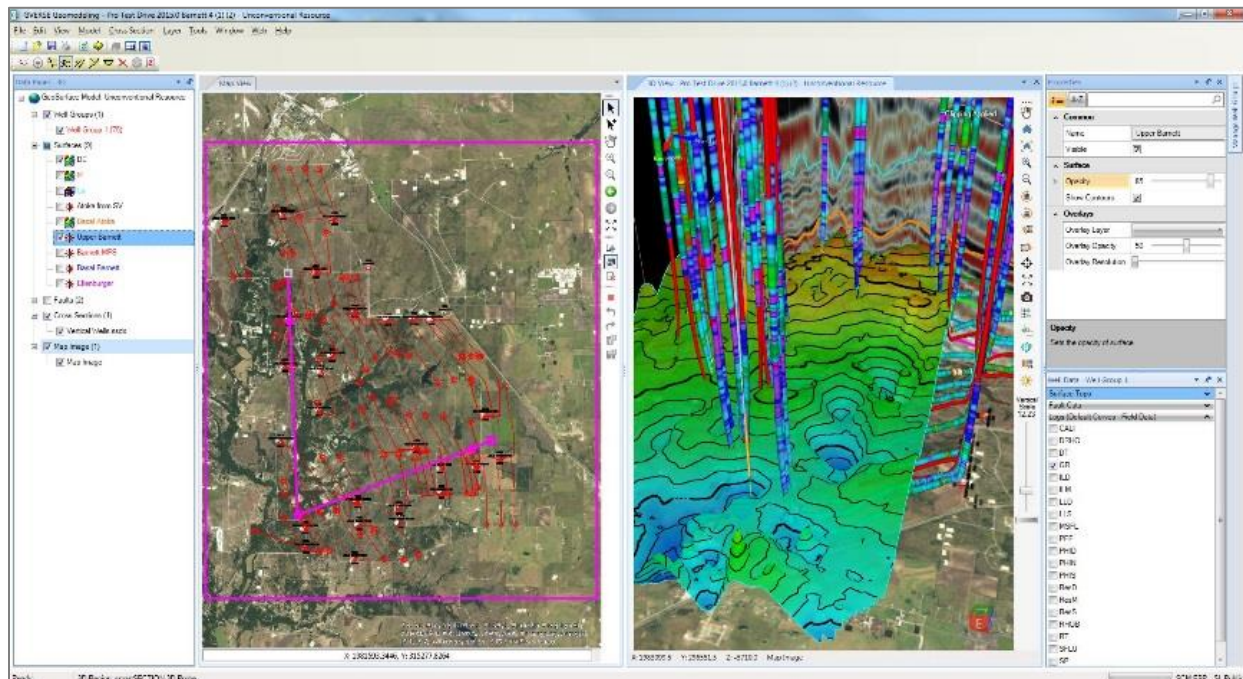
The application is part of the GVERSE application suite by LMKR (<http://www.lmkr.com/gverse>).

LMKR GVERSE consists of geoscience and engineering solutions focused on workflow optimization and enhancing productivity of teams working on diverse geological and geophysical projects.

Main Features

The main features of the Geomodeling application as follows:

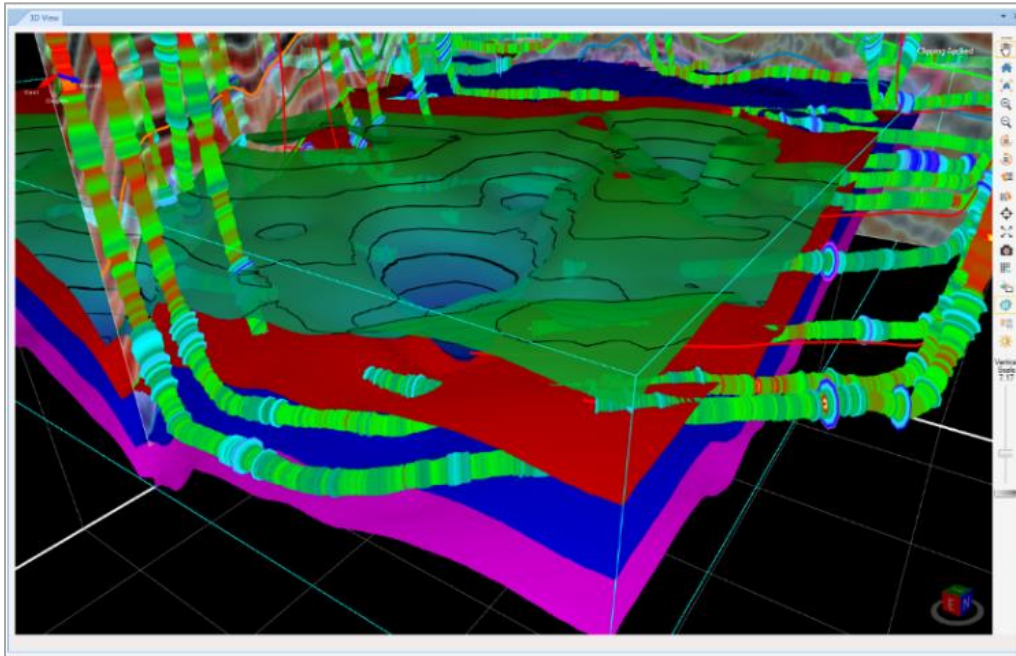
With GVERSE Geomodeling, you can integrate petrophysical, geophysical, drilling, and GIS data into your interpretation to create the most comprehensive geomodel possible. The integrated real-time map view, cross section view, and 3D visualization helps you develop a detailed geomodel with greater precision.



Note: GVERSE Geomodeling is currently restricted to GXDB and does not support DOW.

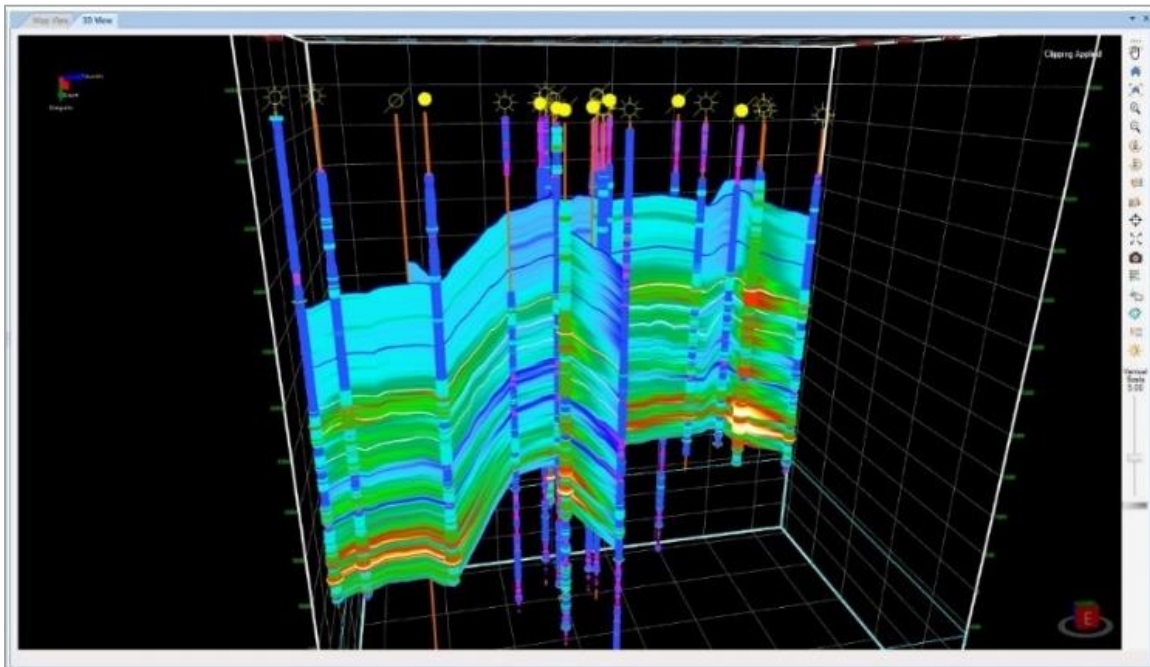
Clipping Planes

Clip planes vertically or horizontally to keep a specific portion of the scene's geometry in focus and examine the interrelationships and intrarelationships between surfaces and faults.



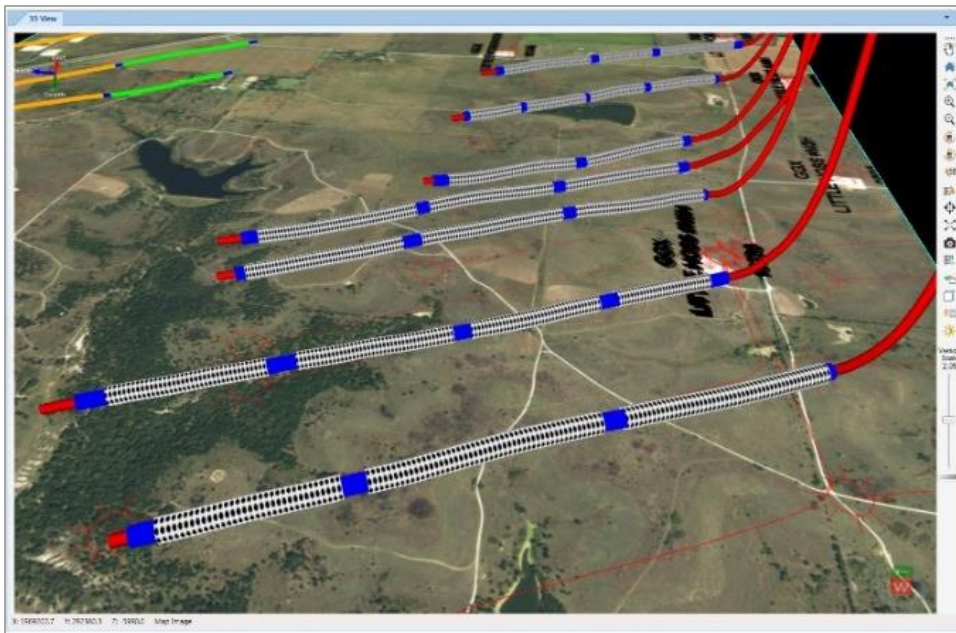
Interpolation

Use the Interpolation option to apply color fill between log curves, based upon an interpolation of the values of a selected digital curve between adjacent wells. The multiple interpolation methods help diagnose interplay between lithofacies and depositional trends as suggested by the log curve response.



Data Postings

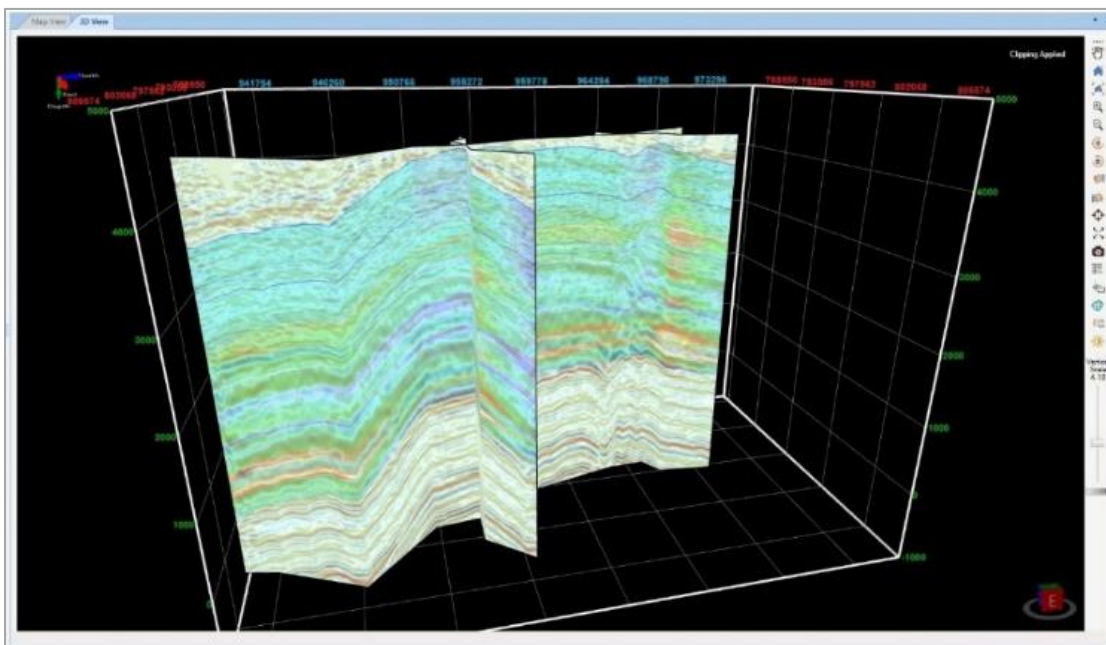
Display Completion, Perforation Stage and Perforation along the wellbore path in 3D View to identify the productive zones of the targeted formations. Display of satellite image along the perforation data also helps to determine potential environmental hazards and plan areas for future prospect accordingly.



Seismic Fence

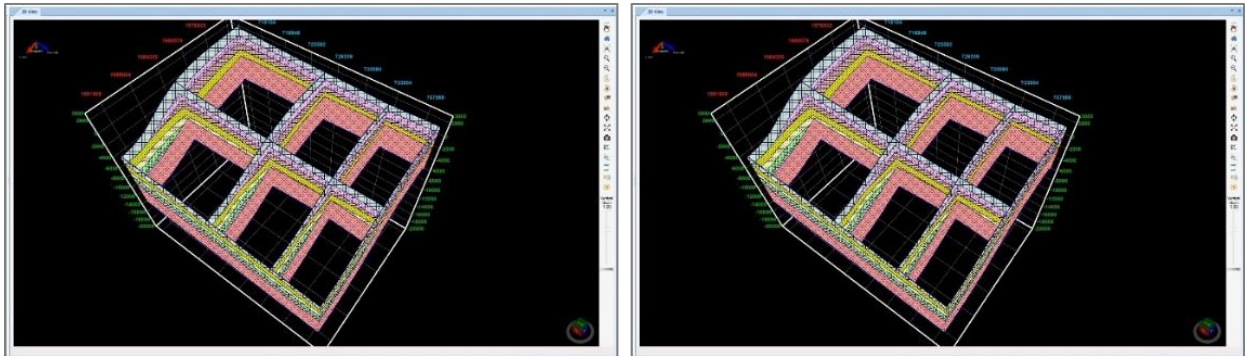
Apply co-blended Interpolated computed or raw curve response over entire seismic to view horizons faults and analyze geological variations and regional behavior of the reservoir.

This feature further assists in justifying reservoir behavior by harmonizing acoustic impedance contrast with the interpolated curve, lateral lithofacies variations, and relevant structural geometries from both cross sections and seismic sections.



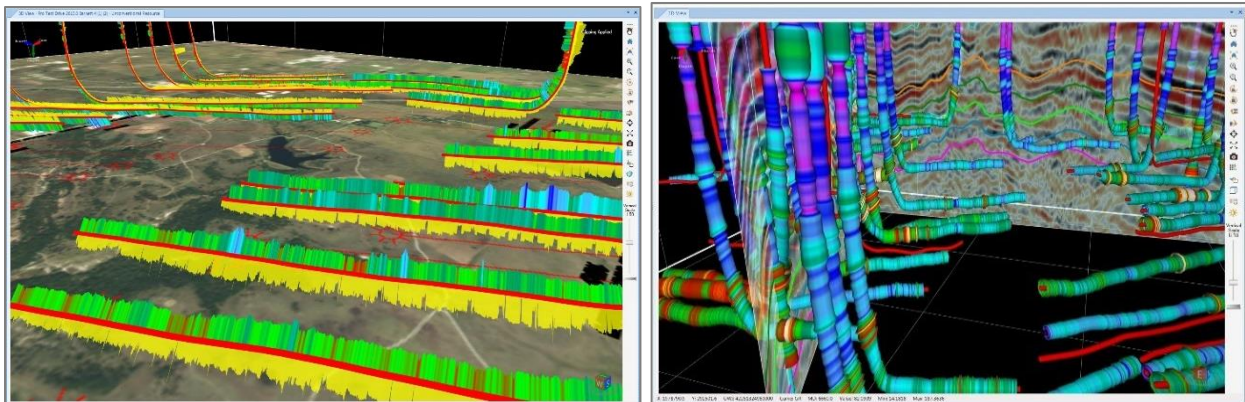
Fence with Lithology Fills

Display lithology along the cross sections to construct and represent litho-stratigraphic relationships, pinchouts and truncations of units, unconformities, structural and stratigraphic traps, and other geological associations in a region



Log Curves

Utilize the two distinct views; Blade view and Lathe view for a detailed Log Curve analysis.



System Requirements

The following sections list the system requirements for the Geomodeling.

Software

The software that must be installed on the system running the application are as follows:

- GeoGraphix Discovery 2017.1
- LMKR License Management Tool 2016.1 for GVERSE Geomodeling license
The LMKR License Management Tool (LMT) must be installed to configure the license.
- Microsoft DirectX End-User Runtime (June 2010)
- Adobe Reader for selected help files (optional)

Operating System

To run the application, you need one of the following operating systems installed on your system:

- Windows® 7 Professional x64
- Windows® 7 Enterprise x64
- Windows® 7 Ultimate x64
- Windows® 10 Professional x64
- Windows® 10 Enterprise x64

Note: It is recommend to use the latest Microsoft® service packs and security patches. Geomodeling specifically requires Windows platform update KB2670838 installed on the machine, in case the operating system is Windows 7.

Hardware

The hardware requirements for this application are the same as the GeoGraphix hardware requirements.

Note: To run Geomodeling, it is recommended that an NVIDIA DirectX 11 compatible card be used. We recommend using the latest video drivers and Microsoft updates for your system.

Licenses

The following licenses are required to run the application:

- GeoGraphix Discovery 2017.1 license
- GVERSE Geomodeling 2017.1 license
The GVERSE Geomodeling license is required to enable Model 3D view and Contours on Map view.
Also note that FrameBuilder™ is part of the GVERSE Geomodeling license.

Note: Refer to the LMKR Customer Support Portal (<http://support.lmkr.com/>) for up-to-date information on the requirements.

Contacting LMKR Support

LMKR is committed to providing the highest level of technical customer support in the industry. With an average tenure of more than thirteen years, our highly trained and experienced staff of technical analysts is comprised of geoscientists, engineers, land professionals, petrophysicists, and system specialists.

Please refer to our Customer Support timings mentioned below to ensure that you have access to our support analysts assigned to your region. When getting in touch with LMKR support, please remember that real-time support will not be available during bank holidays or after office hours. If you do get in touch with LMKR Support outside of work hours, please leave a voice message with a brief description of the issue that you are facing. Your voice message will be used to automatically create a support case for you. This will enable our analysts to attend to your issue and provide you with a resolution as soon as possible

North and South America	Europe, Middle East & Africa
<p>Monday – Friday 8am-6pm CST Toll Free (US/Canada) : +1 855 GGX LMKR (449 5657) Colombia : +57 1381 4908 United States : +1 303 295 0020 Canada : +1 587 233 4004 *Excluding bank holidays</p>	<p>UK Monday - Friday 8am - 5pm +44 20 3608 8042 *Excluding bank holidays</p> <p>UAE Sunday - Thursday (Dubai GMT+4) 8am - 5pm +971 4 3727 999</p> <p>Egypt Sunday - Thursday +0800-000-0635 *Excluding bank holidays</p>
Asia Pacific & Australian Continent	Southwest Asian countries
<p>Malaysia Monday - Friday (Kuala Lumpur GMT+8) 9am - 6pm +60 32 300 8777 *Excluding bank holidays</p>	<p>Pakistan Monday - Friday (Islamabad GMT+5) 9am - 6pm +92 51 209 7400 *Excluding bank holidays</p>

Helpful Links

Name	Website Address
LMKR Homepage	http://www.lmkr.com
LMKR GVERSE	http://www.lmkr.com/gverse
LMKR Support Portal	http://support.lmkr.com