



# Attributes

On the fly high resolution seismic attributes in 3D

## Installation Guide for GVERSE Attributes 2016.1



© 2001 - 2016 LMKR Holdings. All Rights Reserved.

This publication is copyright protected. No part of this publication may be copied or distributed, transmitted, transcribed, stored in a retrieval system, or translated into any human or computer language, in any form or by any means, electronic, magnetic, manual, or otherwise, or disclosed to third parties without the express written permission of:

**LMKR Holdings**

Corporate Headquarters  
Unit No. B1501, Latifa Tower,  
Sheikh Zayed Road,  
Dubai, UAE, P.O.Box 62163.  
Phone: +971 4 372 7900  
FAX: +971 4 358 6386  
Internet: [www.lmkr.com](http://www.lmkr.com)

**Trademark Notice**

**GVERSE™ WebSteering™, Predict3D™, Attributes™, Connect™, Planner™** are trademarks of LMKR.

DecisionSpace, Discovery, GeoGraphix (stylized), GeoGraphix Exploration System, GeoLink, GES, GESXplorer, GMAplus, IsoMap, LeaseMap, LogM, OpenWorks, OpenWorks Well File, PRIZM, SeisVision, Xsection are trademarks, registered trademarks or service marks of Landmark Graphics Corporation.

All other trademarks are the property of their respective owners.

**Disclaimer**

The information contained in this document is subject to change without notice and should not be construed as a commitment by LMKR. LMKR assumes no responsibility for any error that may appear in this manual. Some states or jurisdictions do not allow disclaimer of expressed or implied warranties in certain transactions; therefore, this statement may not apply to you.

# Contents

- Introduction ..... 1
- System Requirements ..... 1
  - Software ..... 1
  - Operating System ..... 1
  - Hardware ..... 2
  - Licenses ..... 2
- Installation ..... 3
  - Installing GVERSE Attributes ..... 3
  - Uninstalling GVERSE Attributes ..... 8
- Licensing ..... 10
  - Configuring the License ..... 10
- Third Party Applications ..... 16
- International Trade Compliance ..... 17
- Definitions ..... 17
- Contacting LMKR Support ..... 18



# Introduction

LMKR is pleased to announce the release of the GVERSE™ Attributes™ 2016.1 software. GVERSE Attributes enables geoscientists to harness the full power of seismic attributes by drastically reducing the time, effort and disk space required for attribute analysis. Fast, on-the-fly computation, and real-time visualization of seismic attributes in a multi-pane viewer, or in a 3D environment, lets interpreters perform detailed, in-depth attribute analysis quickly and efficiently, maximizing the value of their seismic data. GVERSE Attributes is part of the GVERSE application suite by LMKR (<http://www.lmkr.com/gverse>).

LMKR GVERSE consists of geoscience and engineering solutions focused on workflow optimization and enhancing the productivity of the teams working on diverse geological and geophysical projects. These applications help cut the processing time required for interpretations resulting in fast, easy to use scalable tools that are inter-operable with other known geoscience software suites; enabling a connected multi skilled workforce.

This document guides you through the installation and license configuration processes of GVERSE Attributes. It also lists the system requirements necessary to install and run the software.

## System Requirements

The following sections list the system requirements for GVERSE Attributes.

### Software

The software that must be installed on the system running GVERSE Attributes are as follows:

- Microsoft® .NET 4.5
- NVIDIA Driver version 347.62 or higher  
For optimum performance, use NVIDIA graphics card.
- GeoGraphix Discovery 2015.1.x or 2016.1 is required (for integrated mode only)
- LMKR License Management Tool 2016.1 for Attributes license  
The LMKR License Management Tool (LMT) must be installed to configure the Attributes license.

### Operating System

To run GVERSE Attributes, you need one of the following operating systems installed on your system:

- Windows® 7 Professional x64
- Windows® 7 Enterprise x64
- Windows® 7 Ultimate x64

**Note:** It is recommend to use the latest Microsoft® service packs and security patches.

## Hardware

The minimum hardware requirements are as follows:

- 2.4 GHz 64-bit processor
- 8 GB RAM
- Graphics card NVIDIA GeForce 430 or higher with minimum 1GB Dedicated VRAM  
For optimum performance, use NVIDIA graphics card.
- DirectX 11 compatibility of graphics card is required
- 1366 x 768 screen resolution.

The recommended hardware requirements are as follows:

- Quad 3.2 GHz 64-bit
- 32 GB RAM or greater
- High-end NVIDIA GeForce GTX Graphics card X70 - X95 (where X represents GeForce Series 400 onwards) with minimum 2GB dedicated GDDR5 VRAM  
For optimum performance, use NVIDIA graphics card.
- Solid state hard drive (SSD)
- 1920 x 1080 screen resolution.

## Licenses

The following license is required to run GVERSE Attributes:

- GVERSE Attributes 2016.1 license
- GeoGraphix Discovery 2015.1.x or 2016.1 license is required for integrated mode only.

**Note:** Refer to the LMKR Customer Support Portal (<http://support.lmkr.com/>) for up-to-date information on the requirements.

# Installation

This section guides you through the installation and uninstallation processes of GVERSE Attributes.

## Installing GVERSE Attributes

Prior to installation, please make sure that supported version of GeoGraphix is installed on the system.

**Note:** Please also note that in order for the GVERSE software to appear in the GeoGraphix menu or toolbar, it must be installed after the GeoGraphix installation.

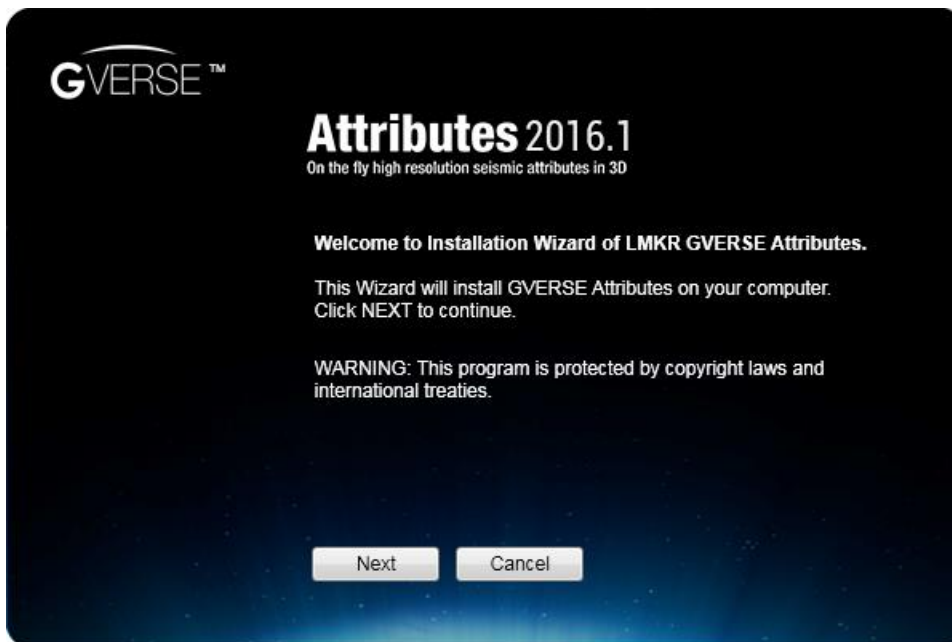
To install GVERSE Attributes:

1. Download the software from the **LMKR Support Portal - Downloads** page (<http://support.lmkr.com/>).
2. Navigate to the location where you downloaded the installation setup.

**Note:** Before starting the installation, please make sure that all open applications are closed.

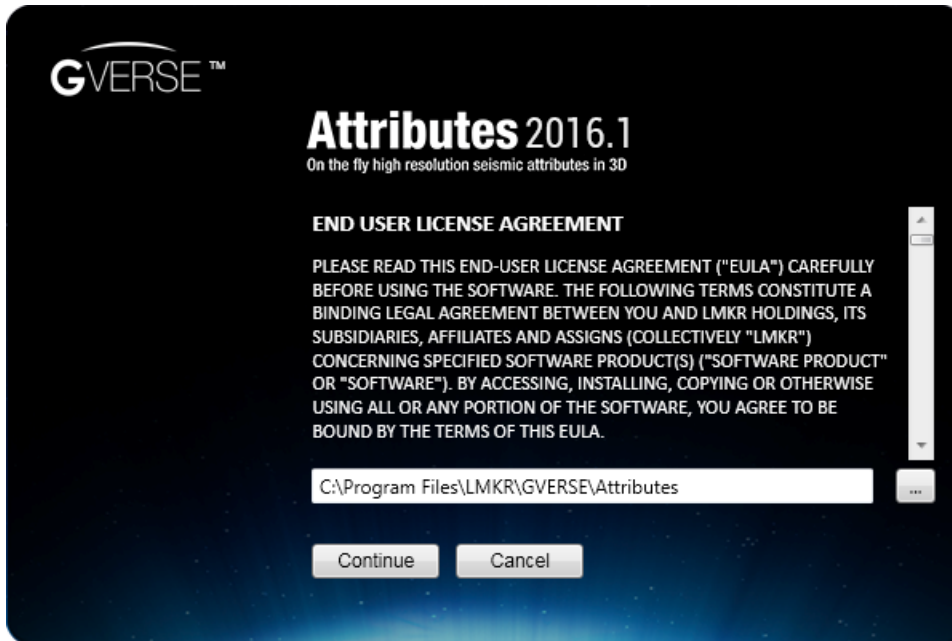
3. Double-click GVERSE Attributes setup executable file (EXE).

The Installation Wizard dialog displays.



4. Click **Next**.

The End User License Agreement dialog displays.



5. If you agree to the license agreement, click **Continue**.

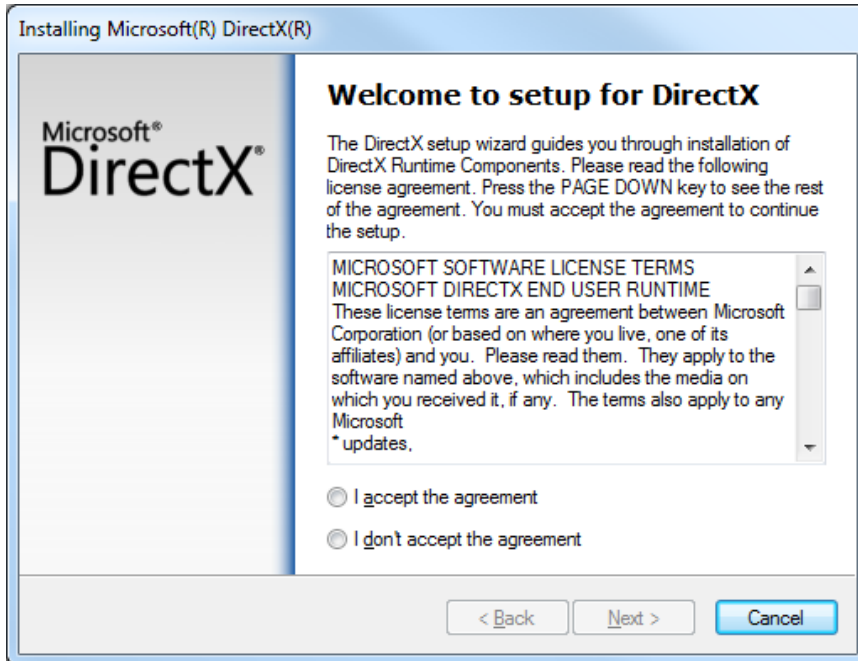
The installation process initiates and checks whether you have DirectX and Windows updates installed on your machine. If you do not have either of the two, the setup installs these on your machine.



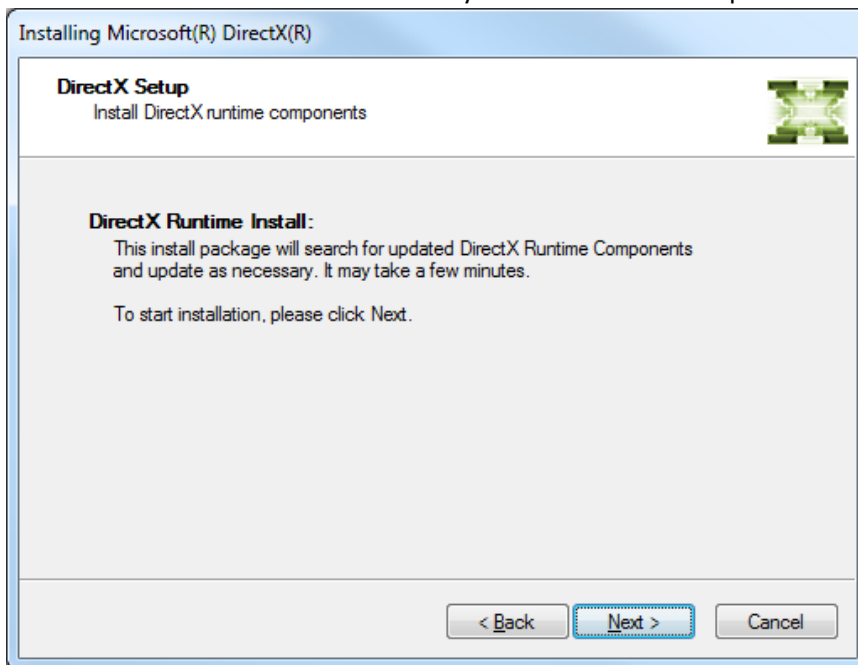
6. Click **Install**.



The DirectX installer extracts and the setup dialog displays.

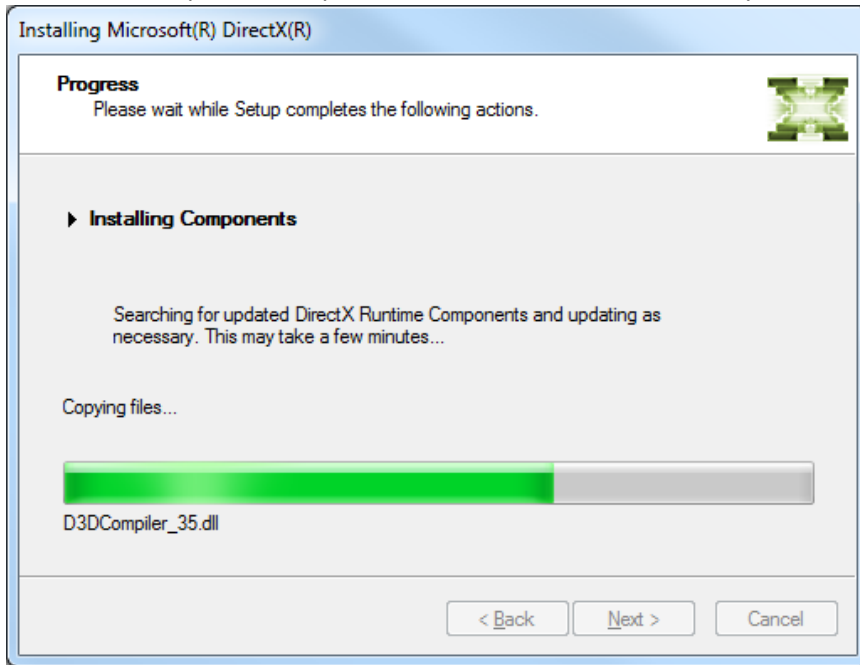


7. If you agree to the license agreement, select **I accept the agreement** and then click **Next**. The installer searches for the necessary DirectX runtime components.

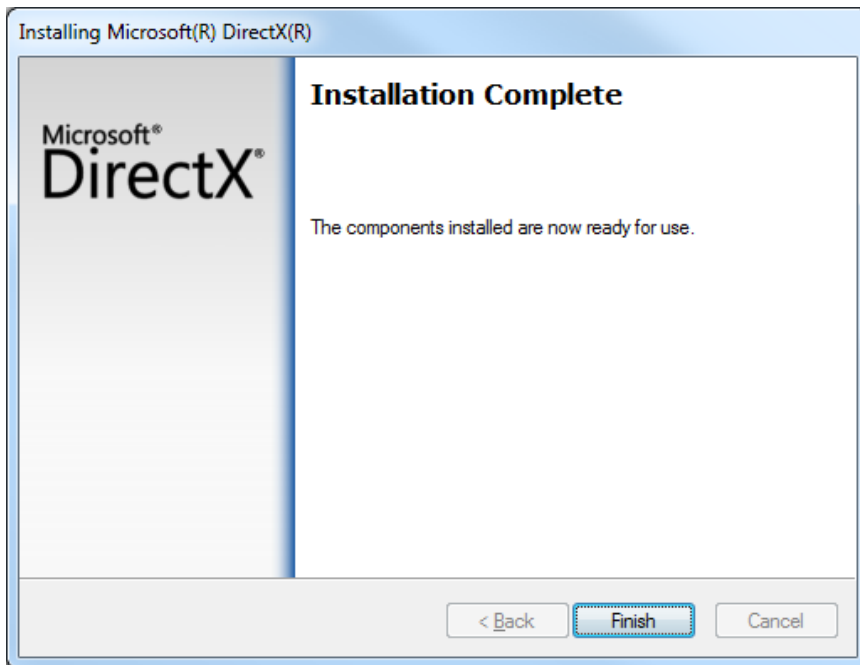


8. Click **Next**.

The installer copies the required files and installs the necessary DirectX components.



When the DirectX installation finishes, the Installation Complete dialog displays.



9. Click **Finish** to complete the DirectX installation.

The installer resumes the GVERSE Attributes installation, and performs the required Windows update(s).



When the GVERSE Attributes installation finishes, the Exit dialog displays.



10. Click **Exit** to complete the installation.

## Uninstalling GVERSE Attributes

To uninstall GVERSE Attributes:

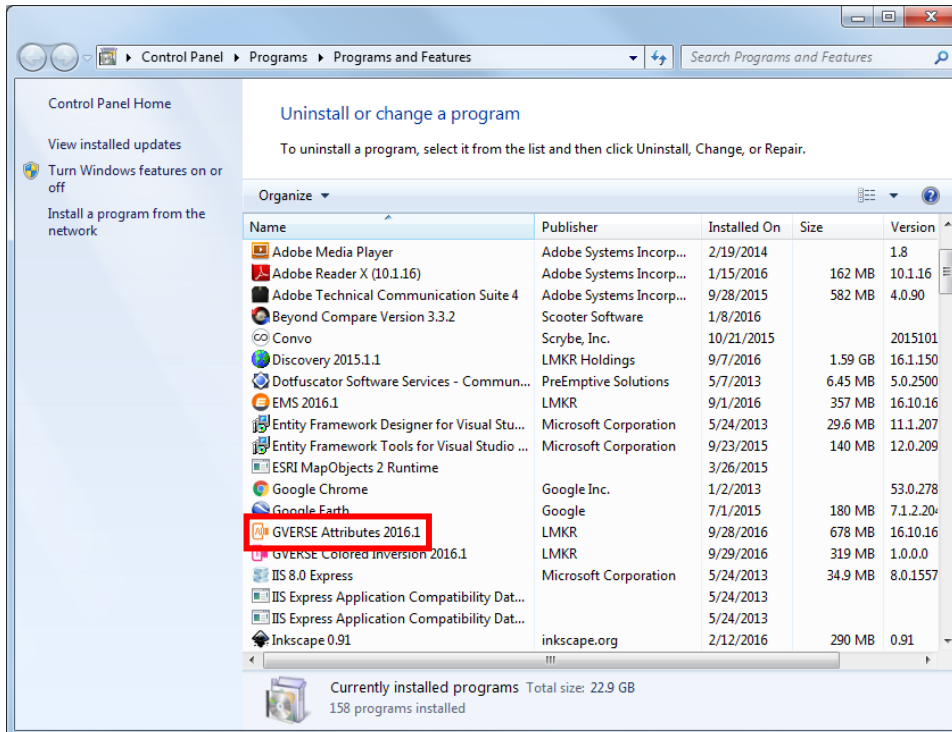
1. From the **Windows Start** menu, select **Control Panel**.

The Control Panel window displays.

2. From **Programs**, select **Uninstall a Program**.

The Programs and Features window displays.

3. In the list of applications, double-click **GVERSE Attributes 2016.1**.



The dialog to uninstall GVERSE Attributes displays.



4. Click **Uninstall**.

The uninstall process initiates and the dialog displays the uninstallation progress. Once GVERSE Attributes is uninstalled from your system, the 'Uninstallation complete' message displays.



5. Click **Exit** to finish the uninstallation.

# Licensing

To run GVERSE Attributes, you need a valid LMKR license. Please contact [COS@lmkr.com](mailto:COS@lmkr.com) to request a license. Once you receive the license, use the LMT to configure it for a single system or to set up a network license on a server. This can be done either before or after GVERSE Attributes installation.

If a license file is not configured, then the software does not open and an error message displays. In this case, you must configure the license using the LMT, and then re-launch GVERSE Attributes.

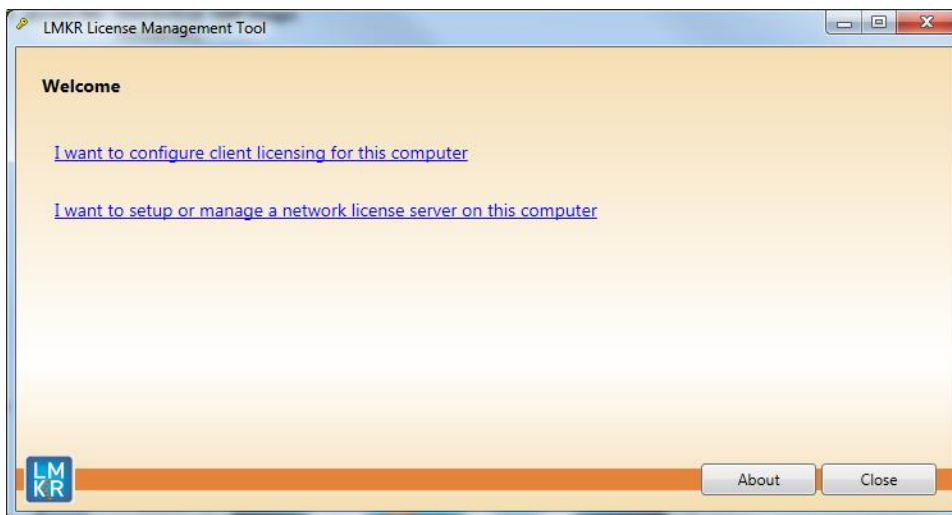
This section provides basic information on how to configure GVERSE Attributes license using the LMT. For detailed information on how to install the LMT and configure GVERSE Attributes license, please refer to the LMT installation document.

## Configuring the License

To configure the GVERSE Attributes license:

1. Obtain your license file from [COS@lmkr.com](mailto:COS@lmkr.com).
2. Download the LMT from the **LMKR Support Portal - Downloads** page (<http://support.lmkr.com/>).
3. Install the LMT. Once installed, launch the LMT from **Start>>All Programs>>LMKR>>Licensing>>License Management Tool**.

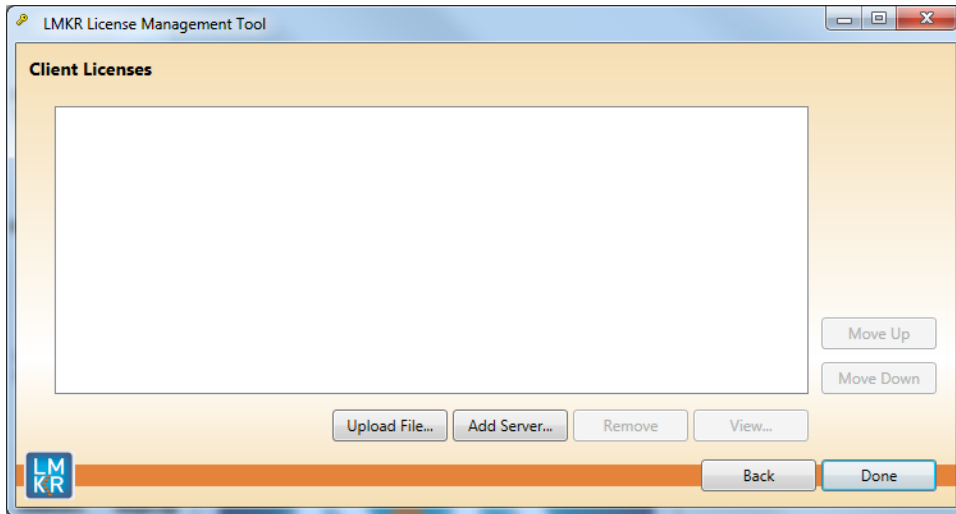
The LMKR License Management Tool Welcome dialog displays.



4. In this dialog, you can either:
  - Click **I want to configure client licensing for this computer** to [configure a client side license](#) on the current system.Or
  - Click **I want to setup or manage a network license server on this computer** to [setup a license server](#).

## Configure a Client Side License

After clicking **I want to configure client licensing for this computer**, the Client Licenses dialog displays.

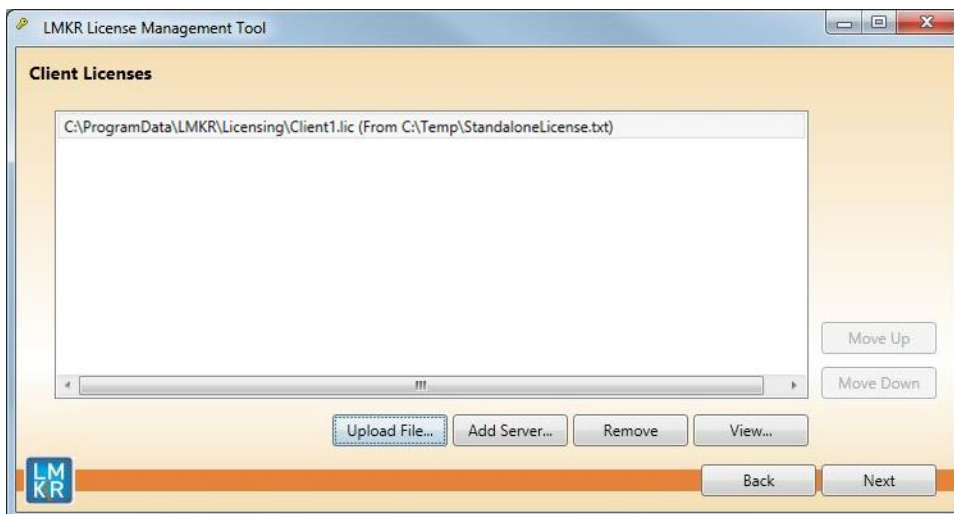


5. In this dialog, you can either:
  - Click **Upload file** to [select a standalone client license file](#).
  - Or
  - Click **Add Server** to [connect to an existing license server](#).

### *Select a Standalone Client License File*

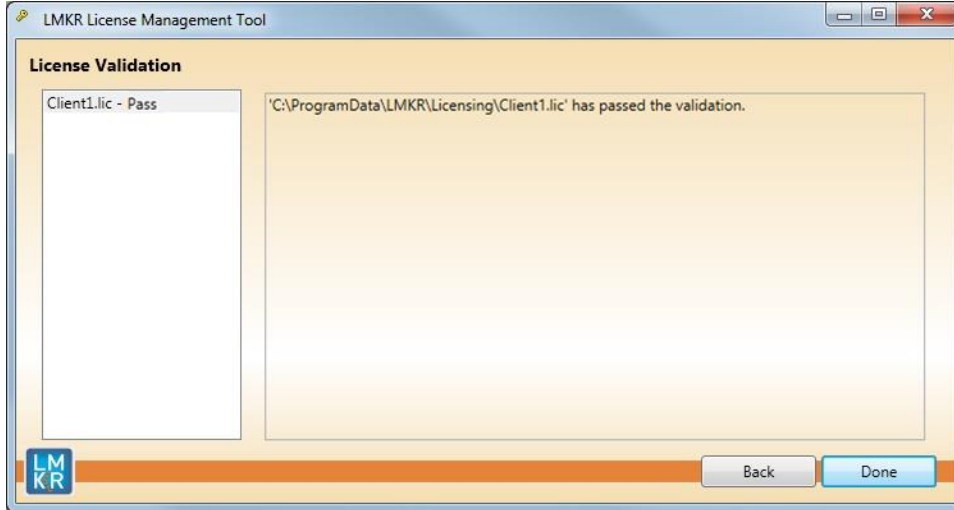
6. Click **Upload File**, browse to select the license you received from LMKR, and then click **Open**.

The selected license displays.



7. Click **Next**.

On successful license configuration, the 'Pass' message displays as shown in the image below.



**Note:** If an error occurs, please contact [support@lms.com](mailto:support@lms.com) for assistance.

8. Click **Done** when finished.

*Connect to an Existing License Server*

6. Click **Add Server**.

The Add Server dialog displays.



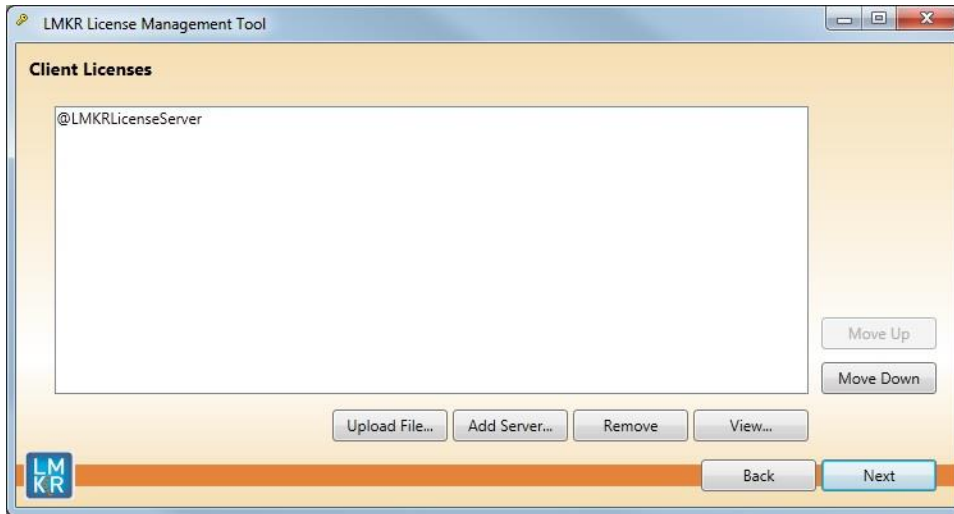
7. In this dialog, specify the following:
  - **Port Number:** If a specific port is required, clear the **Auto** check box, and then enter the port number that matches the port number being used by the LMKR license server (contact your network administrator for more information).
  - **Server Name:** Enter the name or the IP address of the license server.

**Note:** By default, the Auto option is selected where the port is automatically detected. This option is used only when the license server uses a port from within the block of ports specific for Flexera FLEXnet Licensing ranging from 27000 to 27009.



8. Click **OK**.

The selected LMKR license server displays in this dialog.

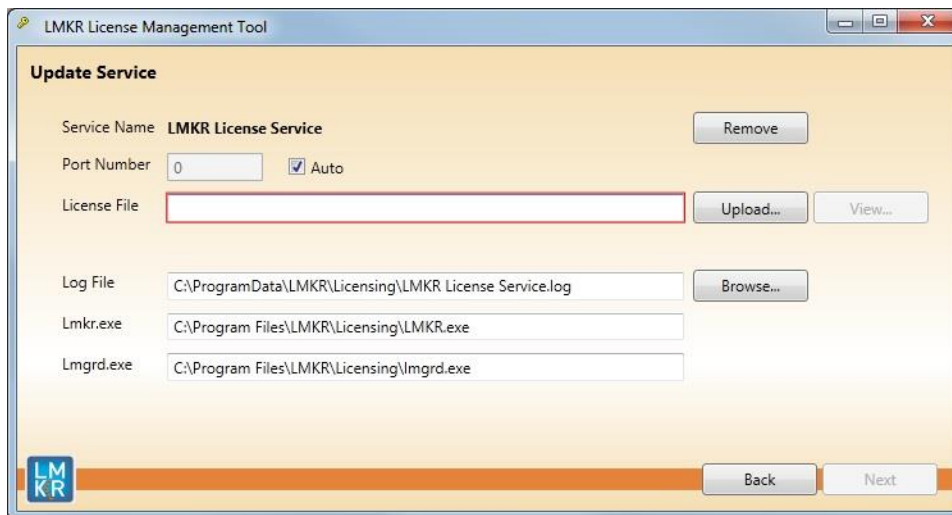


9. Click **Next**.
10. Click **Done** when finished.

## Setup a License Server

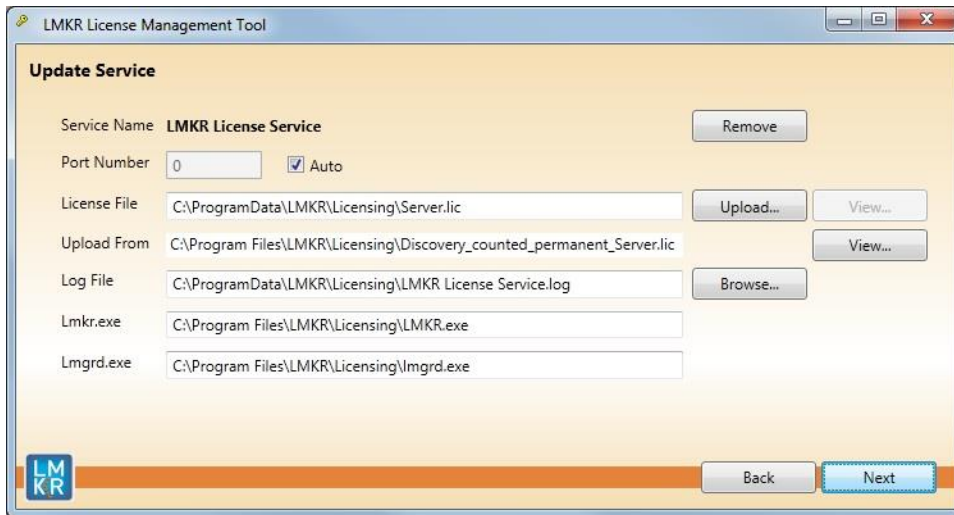
This is only performed on the system running the LMKR license server.

After clicking **I want to setup or manage a network license server on this computer**, the Update Service dialog displays.



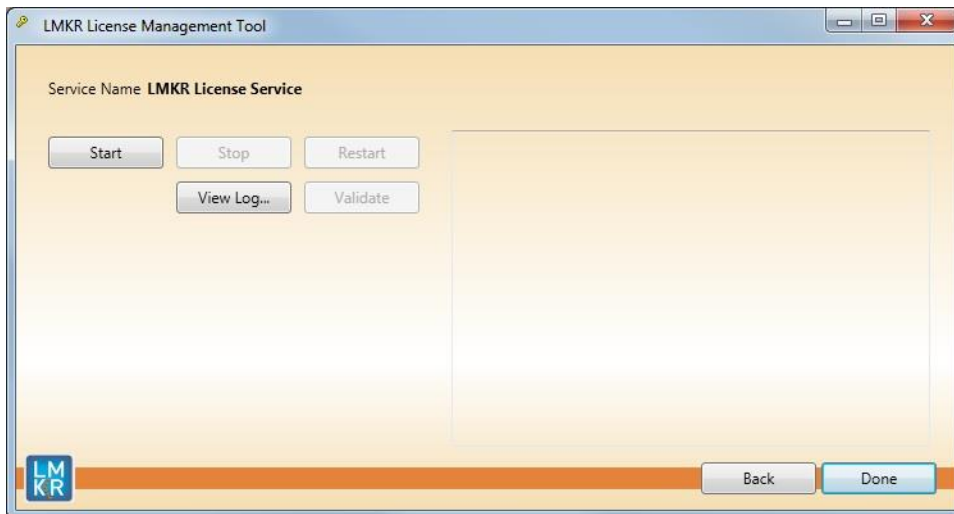
5. In this dialog, specify the following:

- **Port Number:** If a specific port is required by your network administrator, clear the **Auto** check box, and then enter the port number.
- **License File:** Click **Upload** to upload a new license file. The license file that is uploaded is renamed as Server.lic. This file is saved in the C:\ProgramData\LMKR\Licensing folder.
- **Log File:** Click **Browse** to select a location to save the log file.



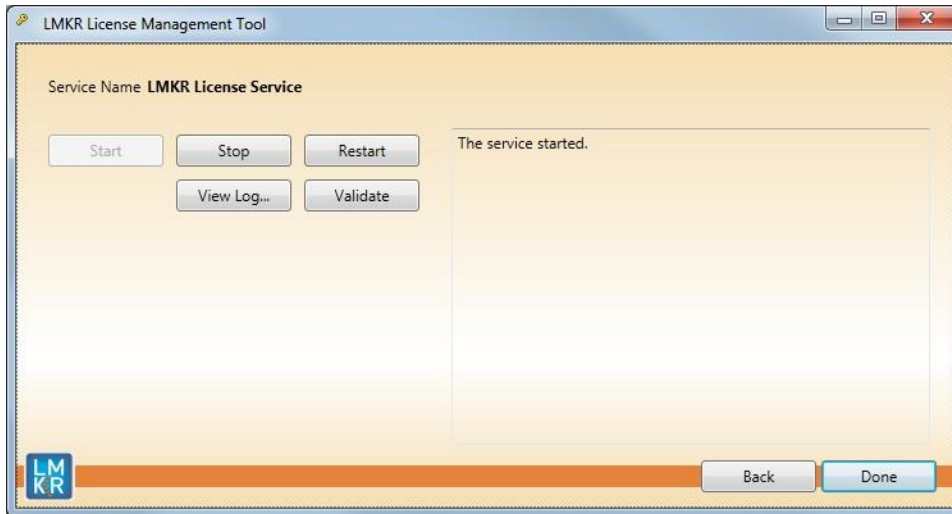
6. Click **Next**.

The LMKR License Server is then installed as a Windows Service.



7. Click **Start** to initiate the **LMKR License Service**.

The 'The service started' message displays on the dialog.




**Note:** If an error appears, contact [support@lms.com](mailto:support@lms.com) for assistance.

8. Click **Done** when finished.

# Third Party Applications

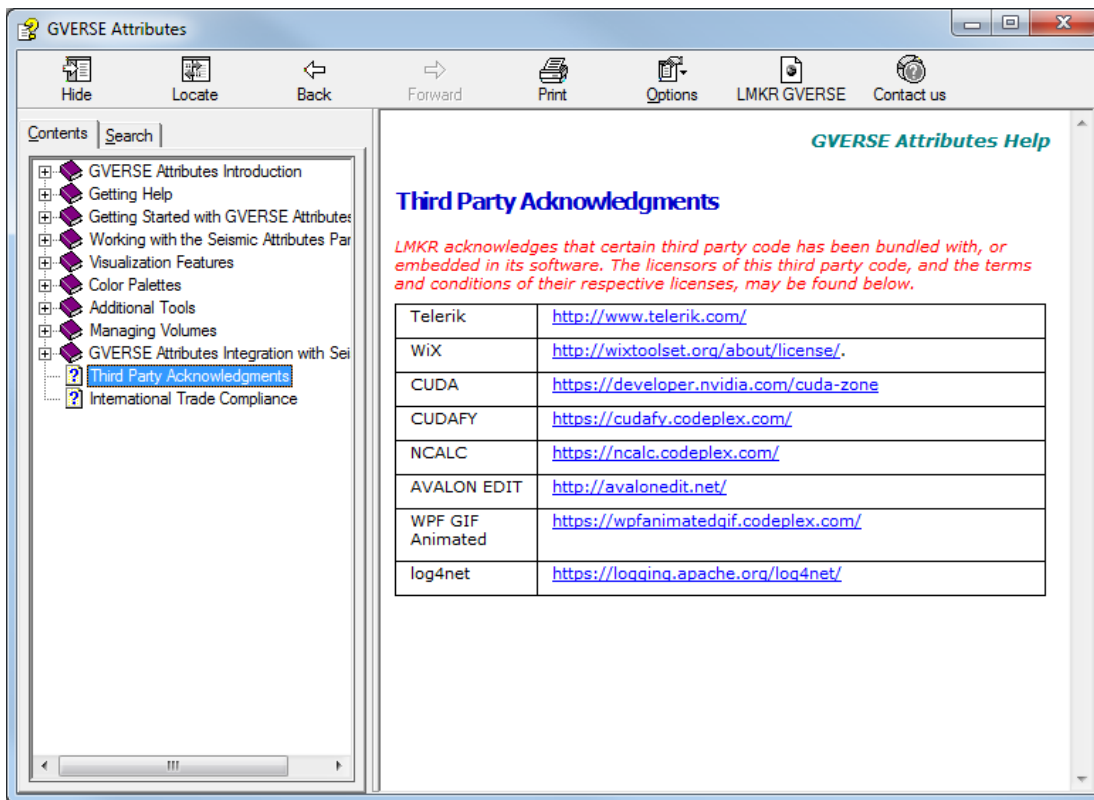
LMKR acknowledges that certain third party code has been bundled with, or embedded in, its software. The licensors of this third party code, and the terms and conditions of their respective licenses, may be found in GVERSE Attributes Help file.

To access the third party license agreements:

1. In the GVERSE Attributes dialog, click .

The Help window displays.

2. In the **Contents** pane, locate the **Third Party Acknowledgments** help topic as shown in the image below.



## International Trade Compliance

This application is manufactured or designed using U.S. origin technology and is therefore subject to the export control laws of the United States. Any use or further disposition of such items is subject to U.S. law. Exports from the United States and any re-export thereafter may require a formal export license authorization from the government. If there are doubts about the requirements of the applicable law, it is recommended that the buyer obtain qualified legal advice. These items cannot be used in the design, production, use, or storage of chemical, biological, or nuclear weapons, or missiles of any kind.

The ECCNs provided here (if available) represent LMKR's opinion of the correct classification for the product today (based on the original software and/or original hardware). Classifications are subject to change. If you have any questions or need assistance please contact us at [support@lmkr.com](mailto:support@lmkr.com).

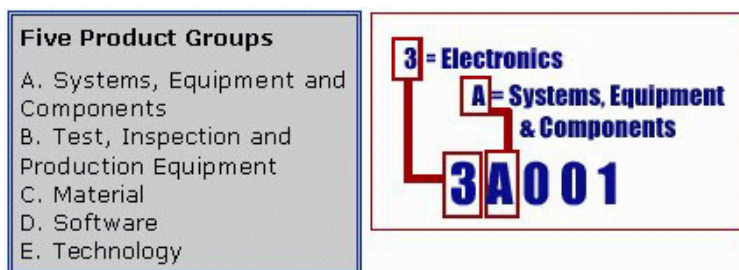
Under the U.S. Export Administration Regulations (EAR), the U.S. Government assigns your organization or client, as exporter/importer of record, responsibility for determining the correct authorization for the item at the time of export/import. Restrictions may apply to shipments based on the products, the customer, or the country of destination, and an export license may be required by the Department of Commerce prior to shipment. The U.S. Bureau of Industry and Security provides a website to assist you with determining the need for a license and with information regarding where to obtain help.

The URL is: <http://www.bis.doc.gov>.

## Definitions

ECCN - Export Control Classification Number - The ECCN is an alpha-numeric code, e.g., 3A001, that describes a particular item or type of item, and shows the controls placed on that item. The CCL (Commerce Control List) is divided into ten broad categories, and each category is further subdivided into five product groups. The CCL is available on the [EAR Website](#).

The following illustration is a sample:



The ECCN number (if available) and License Type for this product are included in the table below. Also included is the date the table was last updated.

Product/Component/R5000	EAR Number	License	Last Updated On
GVERSE Attributes	EAR99	EAR	11/23/2015

## Contacting LMKR Support

LMKR is committed to providing the highest level of technical customer support in the industry. With an average tenure of more than thirteen years, our highly trained and experienced staff of technical analysts is comprised of geoscientists, engineers, land professionals, petrophysicists, and system specialists.

Please refer to our Customer Support timings mentioned below to ensure that you have access to our support analysts assigned to your region. When getting in touch with LMKR support, please remember that real-time support will not be available during bank holidays or after office hours. If you do get in touch with LMKR Support outside of work hours, please leave a voice message with a brief description of the issue that you are facing. Your voice message will be used to automatically create a support case for you. This will enable our analysts to attend to your issue and provide you with a resolution as soon as possible

North and South America	Europe, Middle East & Africa
<p>Monday – Friday 8am-6pm CST Toll Free (US/Canada) : +1 855 GGX LMKR (449 5657) Colombia : +57 1381 4908 United States : +1 303 295 0020 Canada : +1 587 233 4004 *Excluding bank holidays</p>	<p>UK Monday - Friday 8am - 5pm +44 20 3608 8042 *Excluding bank holidays</p> <p>UAE Sunday - Thursday (Dubai GMT+4) 8am - 5pm +971 4 3727 999</p> <p>Egypt Sunday - Thursday +0800-000-0635 *Excluding bank holidays</p>
Asia Pacific & Australian Continent	Southwest Asian countries
<p>Malaysia Monday - Friday (Kuala Lumpur GMT+8) 9am - 6pm +60 32 300 8777 *Excluding bank holidays</p>	<p>Pakistan Monday - Friday (Islamabad GMT+5) 9am - 6pm +92 51 209 7400 *Excluding bank holidays</p>

## Helpful Links

Name	Website Address
LMKR Homepage	<a href="http://www.lmkr.com">http://www.lmkr.com</a>
LMKR GVERSE	<a href="http://www.lmkr.com/gverse/">http://www.lmkr.com/gverse/</a>
LMKR Support Portal	<a href="http://support.lmkr.com">http://support.lmkr.com</a>