

Discovery™ Release 2012.0.1 Patch

End User Installation Instructions

This document contains End User Installation Instructions

- ❑ For network computers, if *any* computers will have Discovery 2012.0.1 Patch installed, then *all* computers must have Discovery 2012.0.1 Patch installed.
- ❑ This installation will successfully run only on computers that have Discovery Release 2012.0.0 applications installed, whether the original distribution was done via DVD or a distribution site.
- ❑ If a distribution site was used for the original 2012.0.0 installation, it is recommended that the Discovery 2012.0.1 Update installation file (Discovery2012.0.1Setup.exe) be placed in the distribution site location and then the End User Installation Instructions contained in this document be followed to update the user's computers.
- ❑ To do any other administrative/distribution method, it is important to refer to the additional documentation posted on the GeoGraphix customer Support Portal (see the Administrative Instructions link on the Discovery 2012.0.1 Patch download page).

NOTE: *If you are going to be using Discovery™ on OpenWorks® using Discovery™ 2012.0.1, you must have OpenWorks® version 5000.8.0.0 installed.*

Discovery 2012.0.1 Download from the Landmark Software Manager

Follow the instructions to download Discovery 2012.0.1 to your system using the Landmark Software Manager (LSM)

1. Within the **Available Downloads** select the **Patch** Discovery 2012.0.1 Patch and the Discovery 2012.0.1Utilities

Note: If you do not need any of the Utilities then it is not necessary to download the Discovery Utilities.

2. Select the **Download Selected** button.
3. Click on the **Agree** button for the **Landmark Software Manager Customer Download Terms and Conditions**.

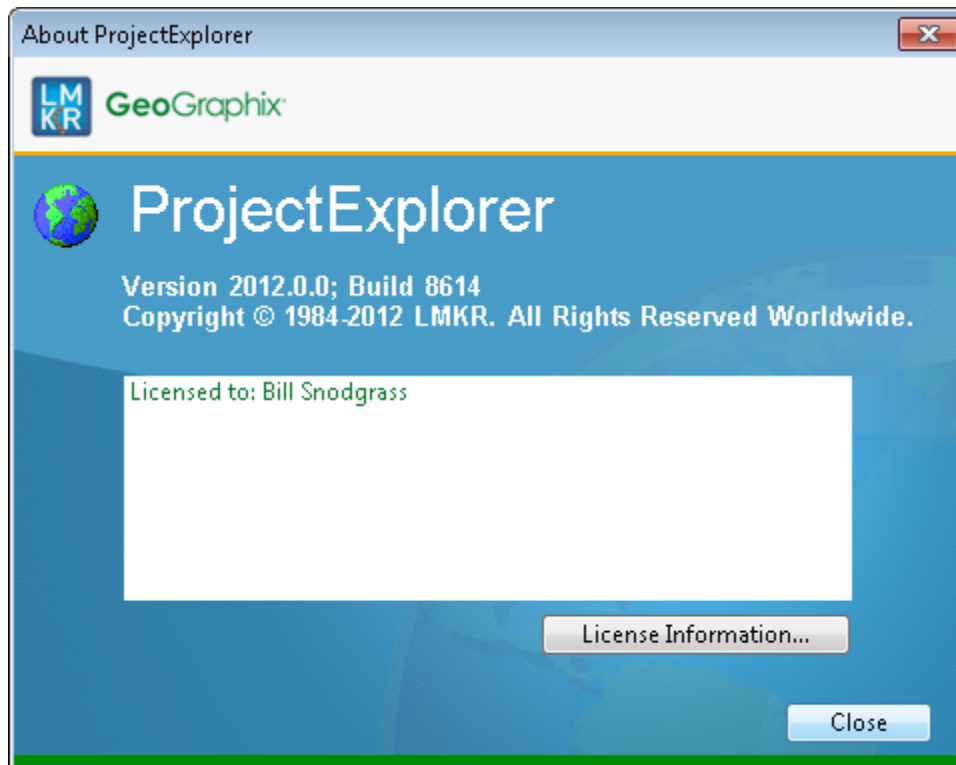
To install the Discovery 2012.0.1 Patch go to your download folder and unzip the **Discovery2012.0.1Setup.zip** file. Double-click the **Discovery2012.0.1Setup.exe** file to start the setup (the install will first need to extract the setup files to the local drive).

See the **ReadMeUtilities.txt** for information on updating the SEG Y loaders.

End User Installation Instructions

Important Notes:

- Discovery Release 2012.0.0 *must* already be installed before installing Discovery 2012.0.1 Patch. To verify the installation of Discovery 2012.0.0, launch ProjectExplorer and go to **Help>>About** in the ProjectExplorer menu bar. *Version 2012.0.0 Build 8614* should be listed if 2012.0.0 is installed.

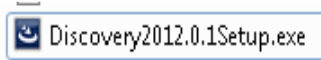


For networked computers, if *any* computers will have Discovery 2012.0.1 Patch installed, then *all* computers must have it installed. Close all Windows applications, including GeoGraphix applications, before installing Discovery 2012.0.1 Patch.

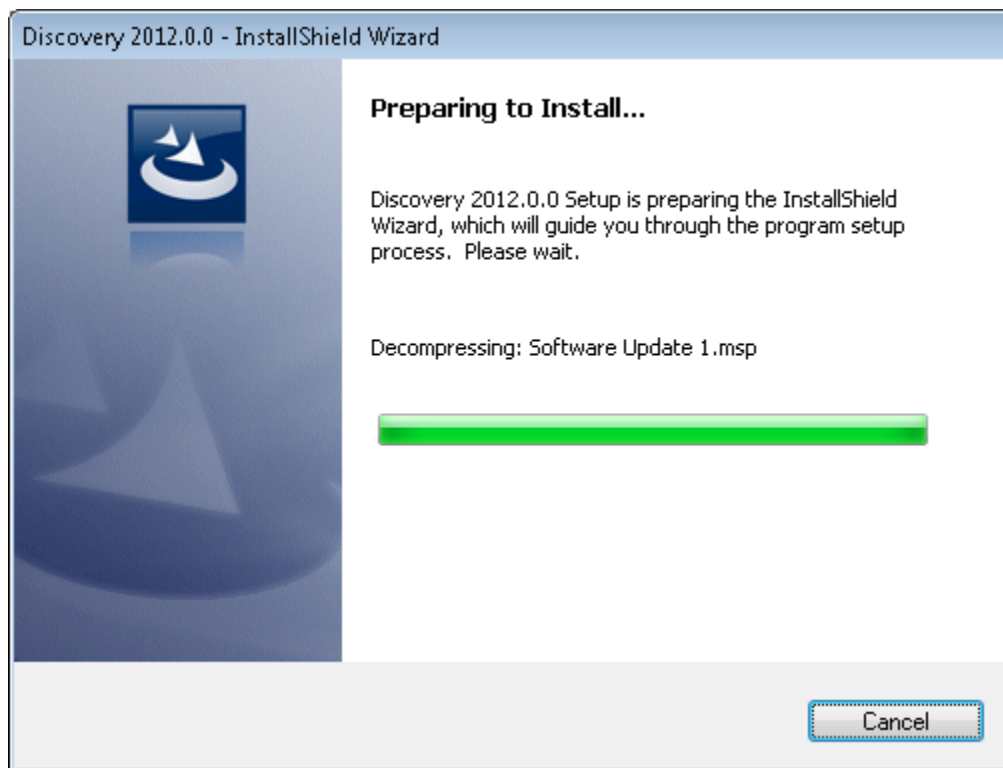
- If Discovery Release 2012.0.0 was loaded from a DVD, you will need to insert the DVD into the DVD drive to successfully complete the Discovery 2012.0.1 Update installation. If Discovery Release 2012.0.0 was installed from a network drive, then that network drive must be available.

Step-by-Step Instructions:

1. After the Discovery2012.0.1Setup.exe file is downloaded from the Landmark Software Manager (LSM), double-click it to start the update installation process.



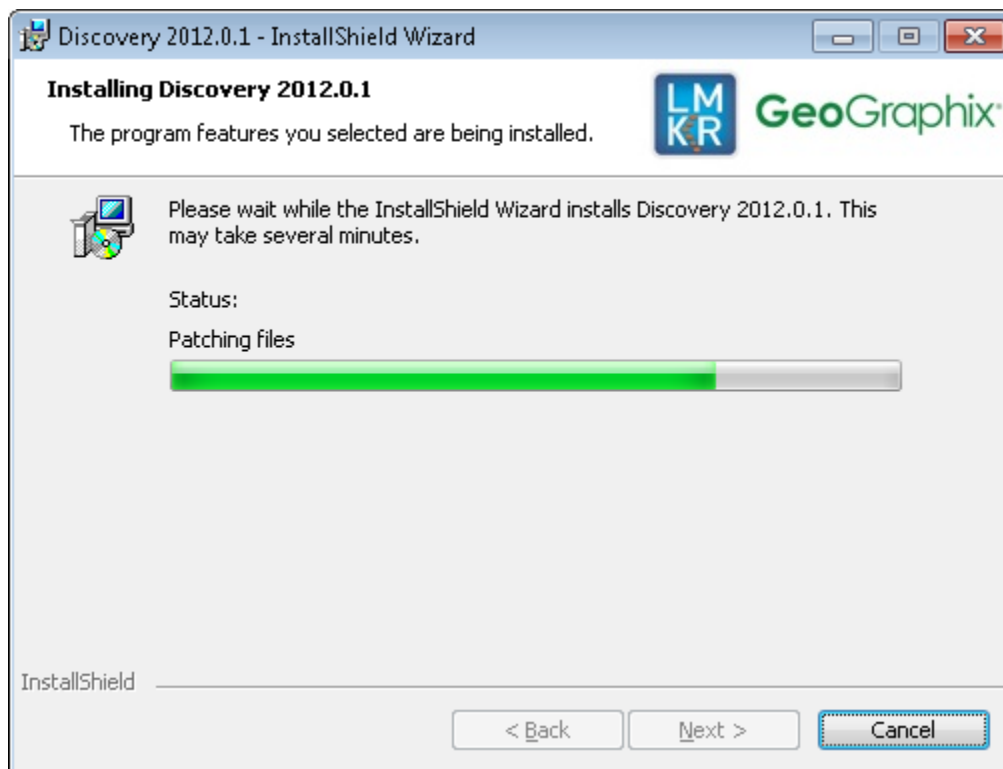
The InstallShield Wizard starts and prepares the Discovery 2012.0.0 Update installation.



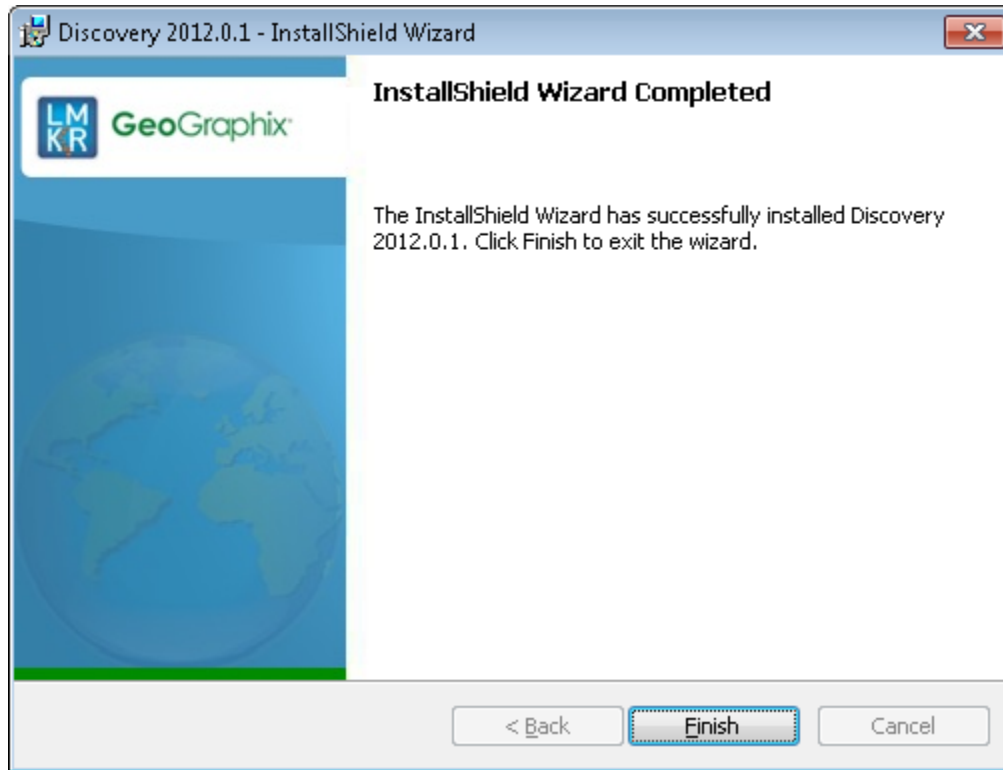
The *Welcome to Discovery 2012.0.1 Software Update* dialog box appears.



2. Click the **Update** command button to begin the installation of Discovery 2012.0.1 update. The *Installing Discovery 2012.0.1* dialog box appears.



When the install is complete the *InstallShield Wizard Completed* dialog appears. Click **Finish** to complete the installation.



3. To verify that Discovery 2012.0.1 Patch was successfully installed, launch ProjectExplorer and click on **Help>>About** in the ProjectExplorer menu bar. *Version 2012.0.1 Build 8661* should now be present.

